



West Road

Shoeburyness

£180,000

Price Guide



1



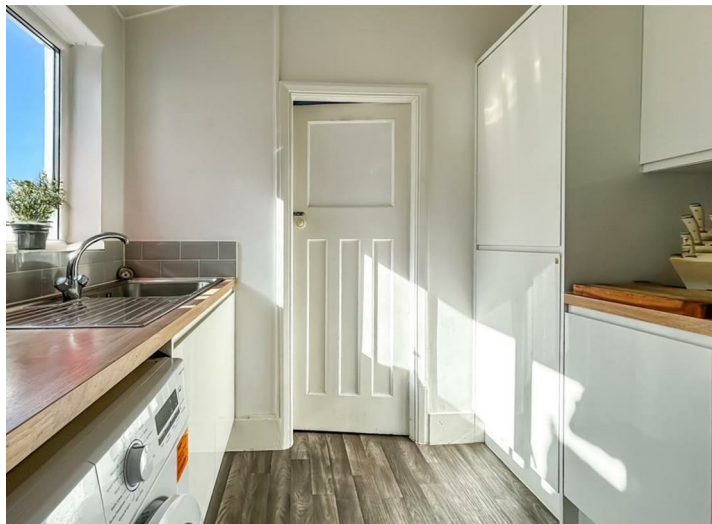
1



1



West Road

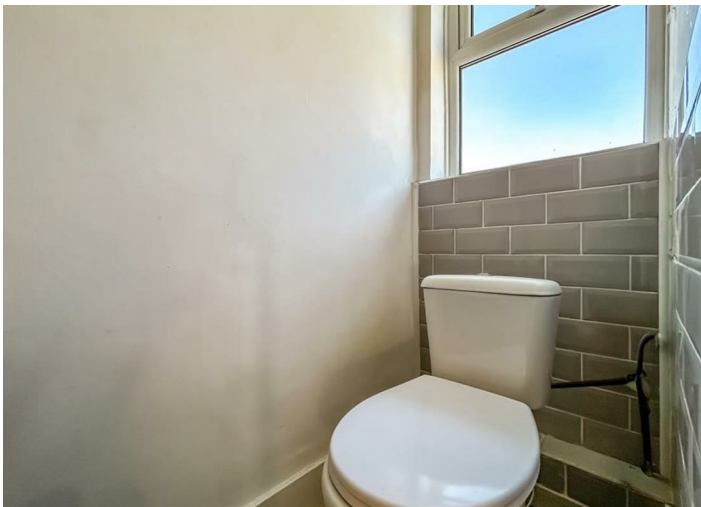


Description

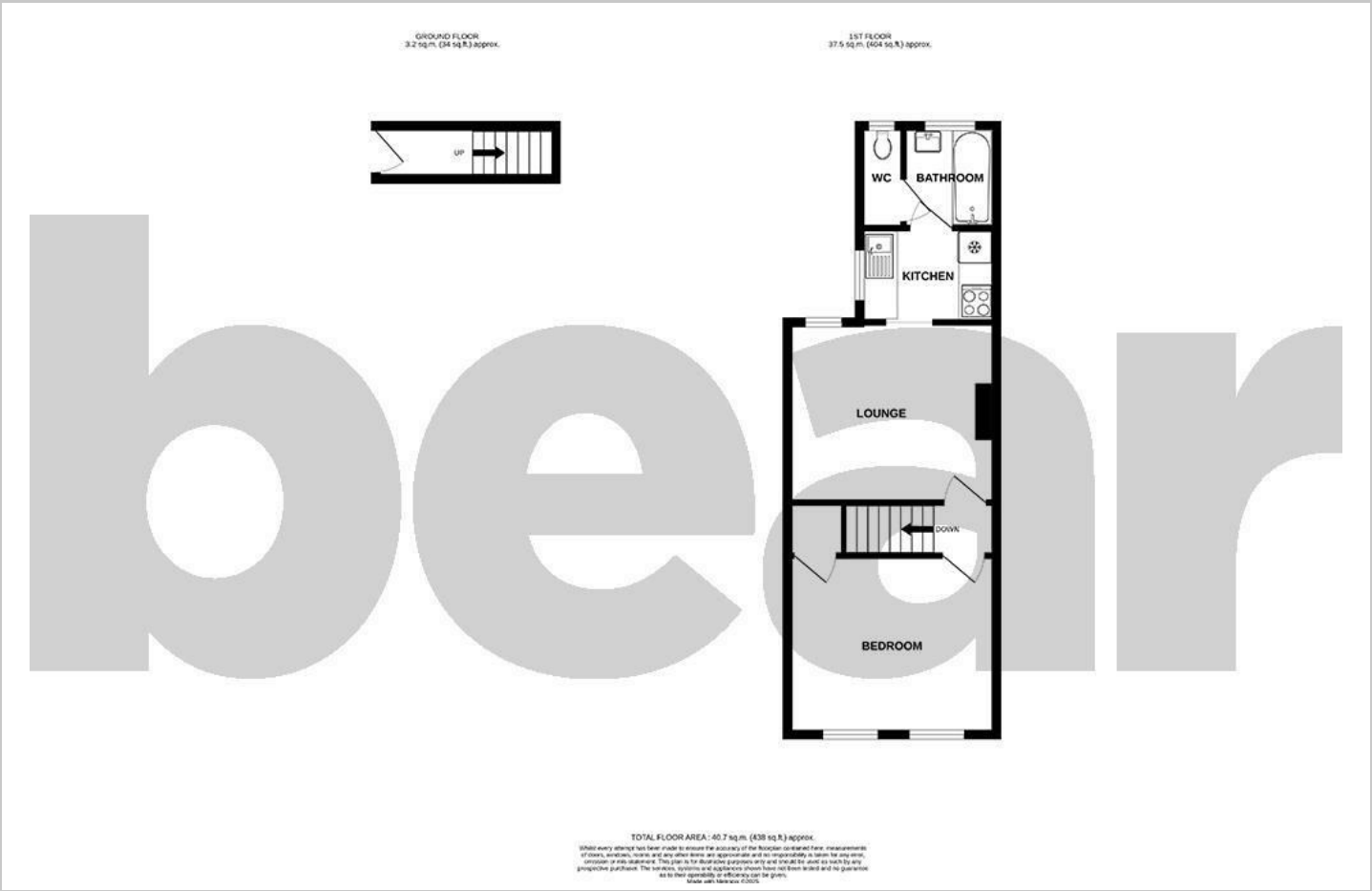
* Guide Price £180,000 - £200,000 * No Onward Chain * This well-presented first floor flat offers comfortable living throughout, featuring a bright lounge with a feature fireplace and an opening into a modern kitchen. The property benefits from one double bedroom and a well-maintained bathroom with a separate WC. Ideally located in Shoeburyness, it's within walking distance of the seafront, amenities, and Shoeburyness Train Station, which guarantees a seat on all trains to London.

- Well Presented First Floor
- Opening into Modern Fitted Kitchen
- Two Piece Bathroom and a Separate WC
- Walking Distance to Shoeburyness Train Station
- Close to Seafront, Bus Links and Amenities
- Bright Lounge with a Feature Fireplace
- One Double Bedroom
- Double Glazing and Electric Heating
- Guaranteed Seat on All Trains to London
- Ideal for First Time Buyers or Investors

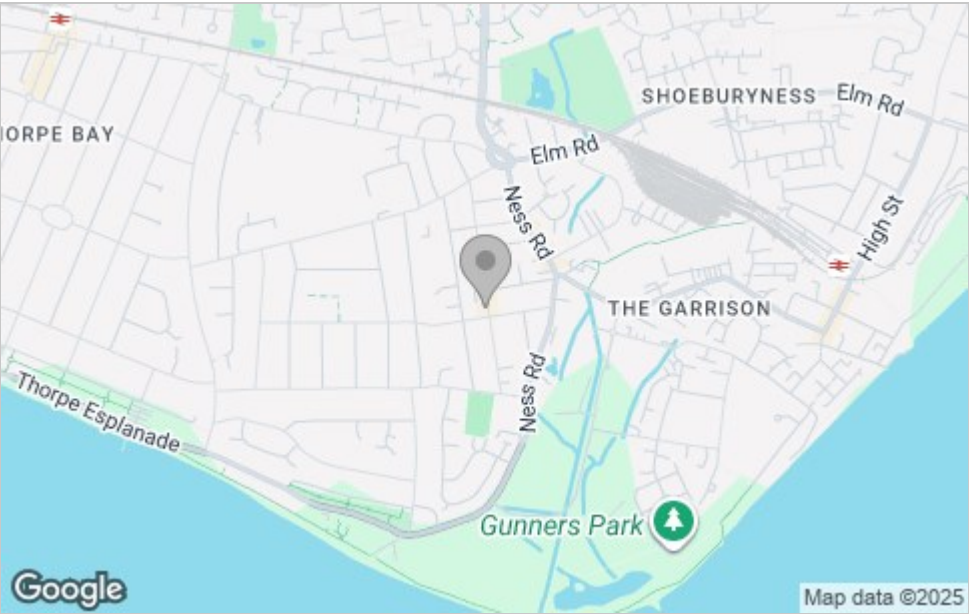




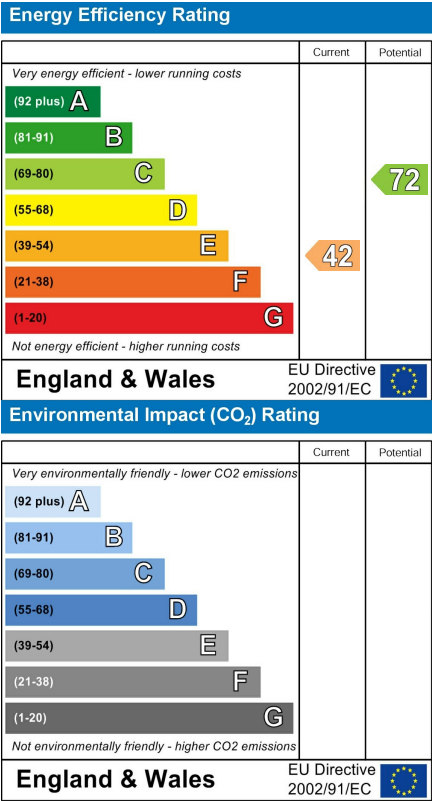
Floor Plan



Area Map



Energy Efficiency Graph



Viewing

Please contact our Southend-on-Sea Office on 01702 811211 if you wish to arrange a viewing appointment for this property or require further information.

These particulars, whilst believed to be accurate are set out as a general outline only for guidance and do not constitute any part of an offer or contract. Intending purchasers should not rely on them as statements of representation of fact, but must satisfy themselves by inspection or otherwise as to their accuracy. No person in this firm's employment has the authority to make or give any representation or warranty in respect of the property.