

# bear

*Estate Agents*



## Beverley Gardens

Southend-on-Sea

**£190,000**

Guide Price





# Beverley Gardens

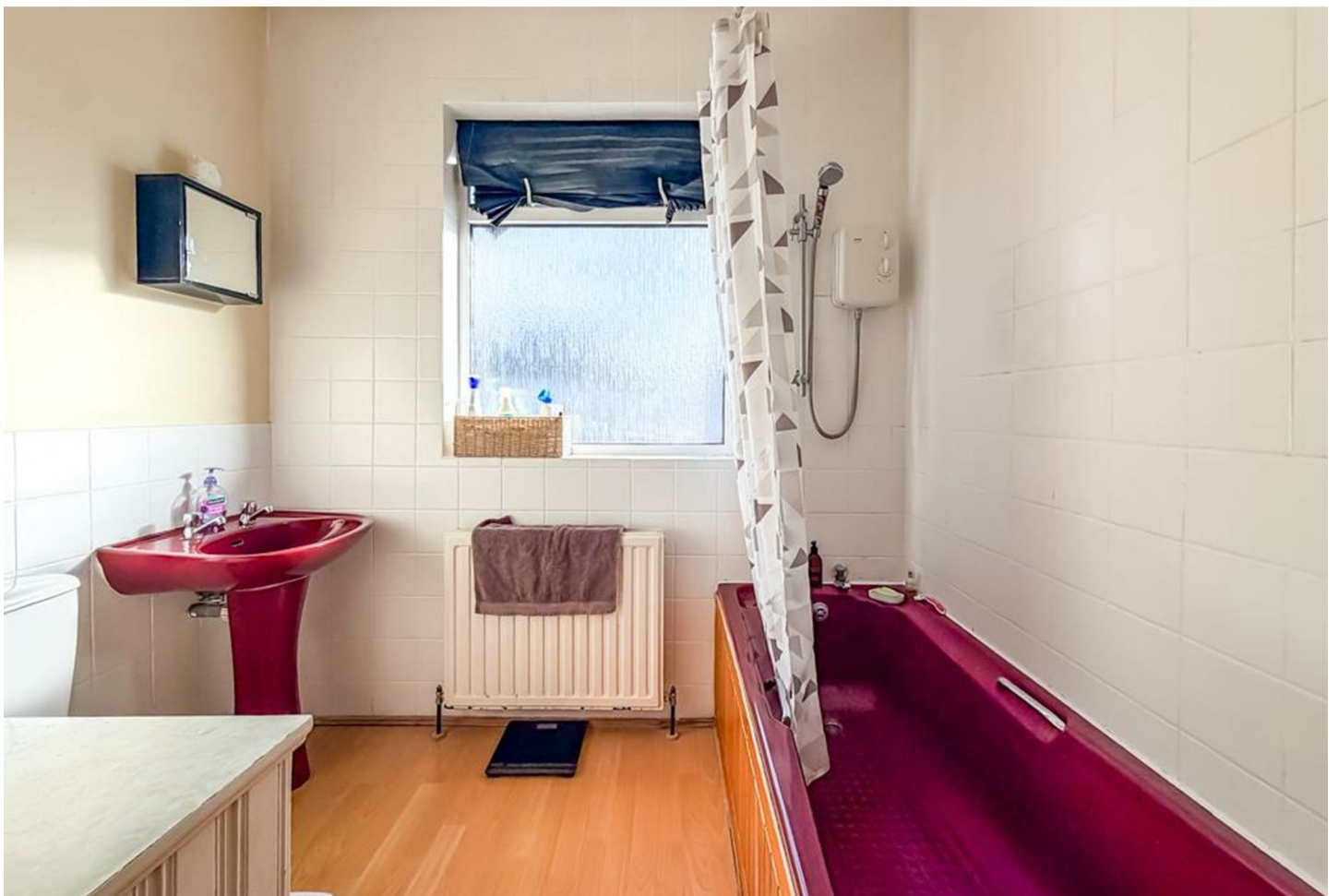


## Description

\* £190,000 - £200,000 \* Bear Estate Agents are pleased to present this spacious one bedroom first floor flat, offering excellent potential and situated in a convenient location close to amenities and transport links. This bright and well-proportioned home benefits from a generous bay fronted lounge and double glazing throughout — making it an ideal purchase for first-time buyers, investors, or those seeking a project with scope to modernise and add value.

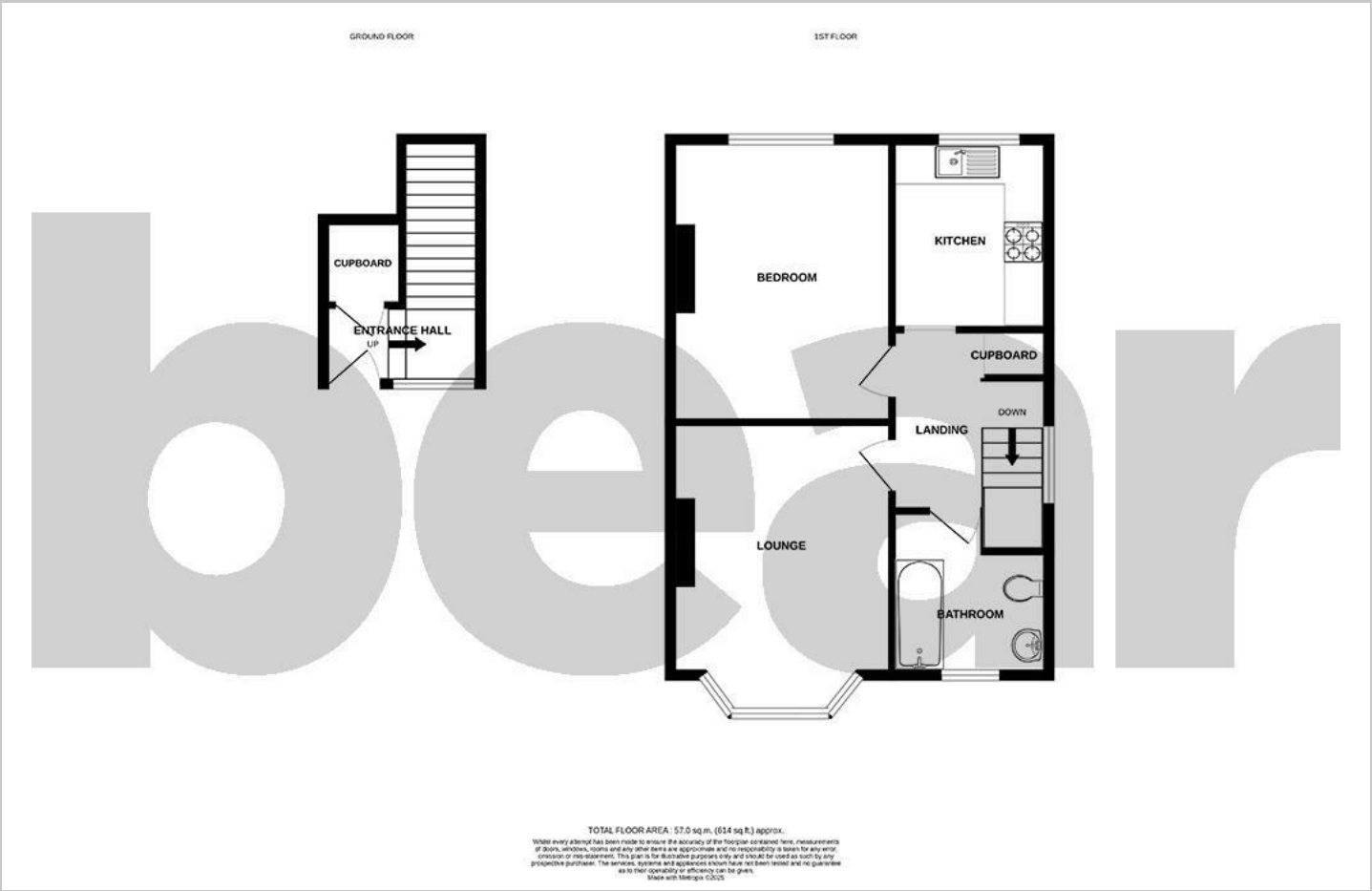
- One Bedroom First Floor Flat with No Onward Chain
- Fitted Kitchen
- Storage Space
- Gas Central Heating
- Ideal for First-Time Buyers or Investors
- Spacious Bay Fronted Lounge
- Large Double Bedroom
- Double Glazing
- Well Presented
- Excellent Potential to Modernise and Add Value



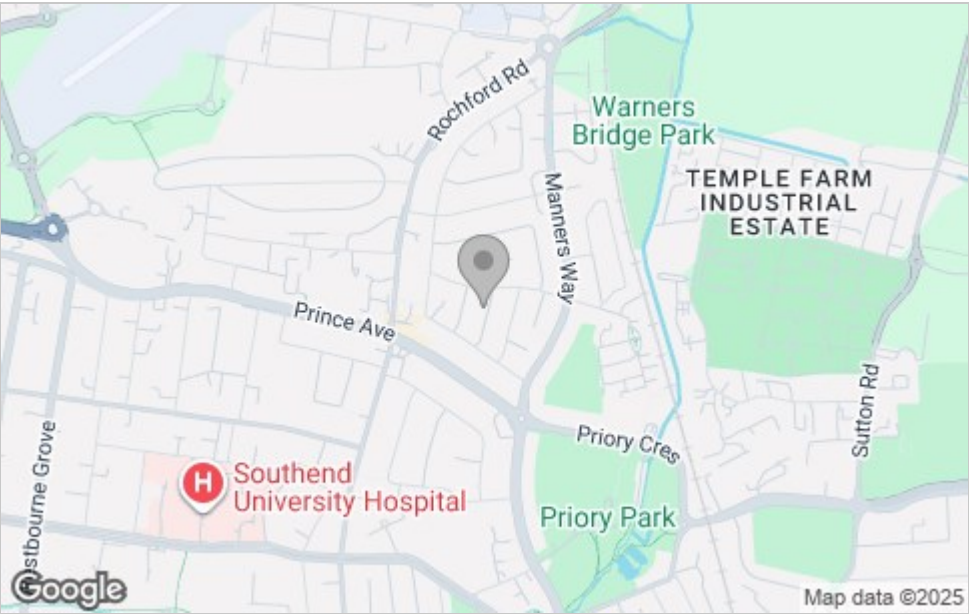




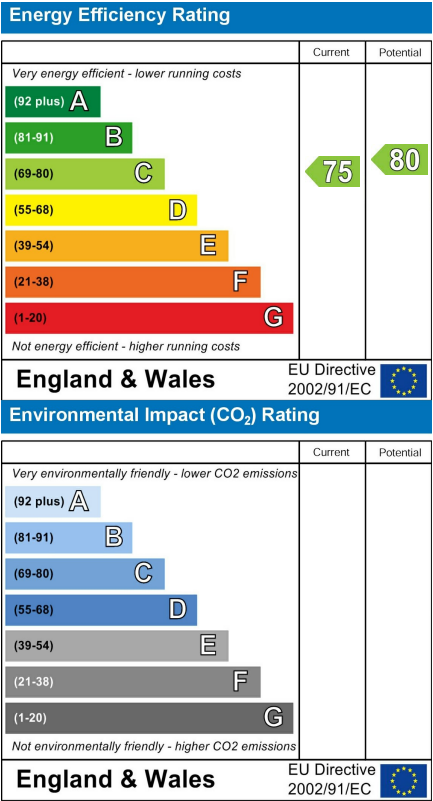
Floor Plan



Area Map



Energy Efficiency Graph



Viewing

Please contact our Southend-on-Sea Office on 01702 811211 if you wish to arrange a viewing appointment for this property or require further information.

These particulars, whilst believed to be accurate are set out as a general outline only for guidance and do not constitute any part of an offer or contract. Intending purchasers should not rely on them as statements of representation of fact, but must satisfy themselves by inspection or otherwise as to their accuracy. No person in this firms employment has the authority to make or give any representation or warranty in respect of the property.

204 Woodgrange Drive, Southend-on-Sea, Essex, SS1 2SJ

Office: 01702 811211 [info@bearestateagents.co.uk](mailto:info@bearestateagents.co.uk) <https://www.bearestateagents.co.uk>