



* No Onward Chain * This spacious first floor flat comes to market with no onward chain and an impressive list of recent upgrades including a new roof, windows, boiler and more. The property offers a generous lounge, a large kitchen/diner and a double bedroom. Situated close to transport links, local amenities and Southend's City Centre, it makes an ideal first-time purchase or investment.

Salisbury Avenue

Westcliff-on-Sea

£160,000

Offers Over

- Spacious First Floor Flat
- Large Lounge
- One Large Double Bedroom
- Extensive Recent Upgrades Throughout
- Close To A127, London Road and Westcliff Station
- Offered with No Onward Chain
- Generous Kitchen/Diner with Storage
- Three Piece Shower Room with Built-in Storage
- New Roof, Windows, Boiler and Carpets
- Near Amenities, Southend City Centre and Seafront



Salisbury Avenue



The flat is accessed via a landing that leads to a well-proportioned lounge and a spacious kitchen/diner, which benefits from built-in storage. A large double bedroom and a three-piece shower room with further storage complete the accommodation. The property is offered with no onward chain and has undergone extensive modernisation, including a new roof, new gutters, newly painted exterior, new patio, new front door, new double-glazed windows, new boiler, new radiators and new carpets throughout. This ensures peace of mind for buyers and presents a home that is ready to move straight into.

Located on Salisbury Avenue, the property benefits from excellent connectivity. The A127 and London Road are within easy reach, as are convenient bus routes and Westcliff Train Station, which offers direct services into London. A range of amenities, Southend's City Centre and the seafront are all close by, providing both practicality and leisure for residents.

One Bedroom First Floor Flat

Landing

12'1 x 5'2

Lounge

14'8 x 11'6

Kitchen/Diner

14'11 x 9'8

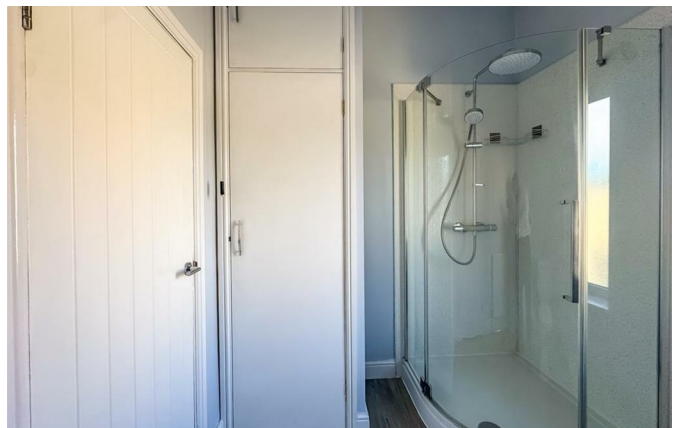
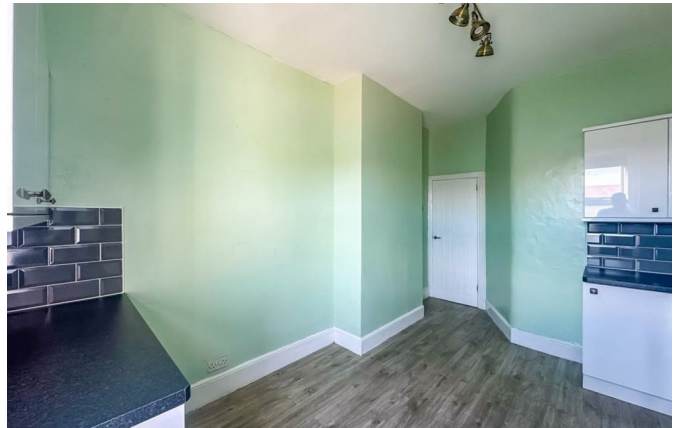
Bedroom

12'1 x 9'1

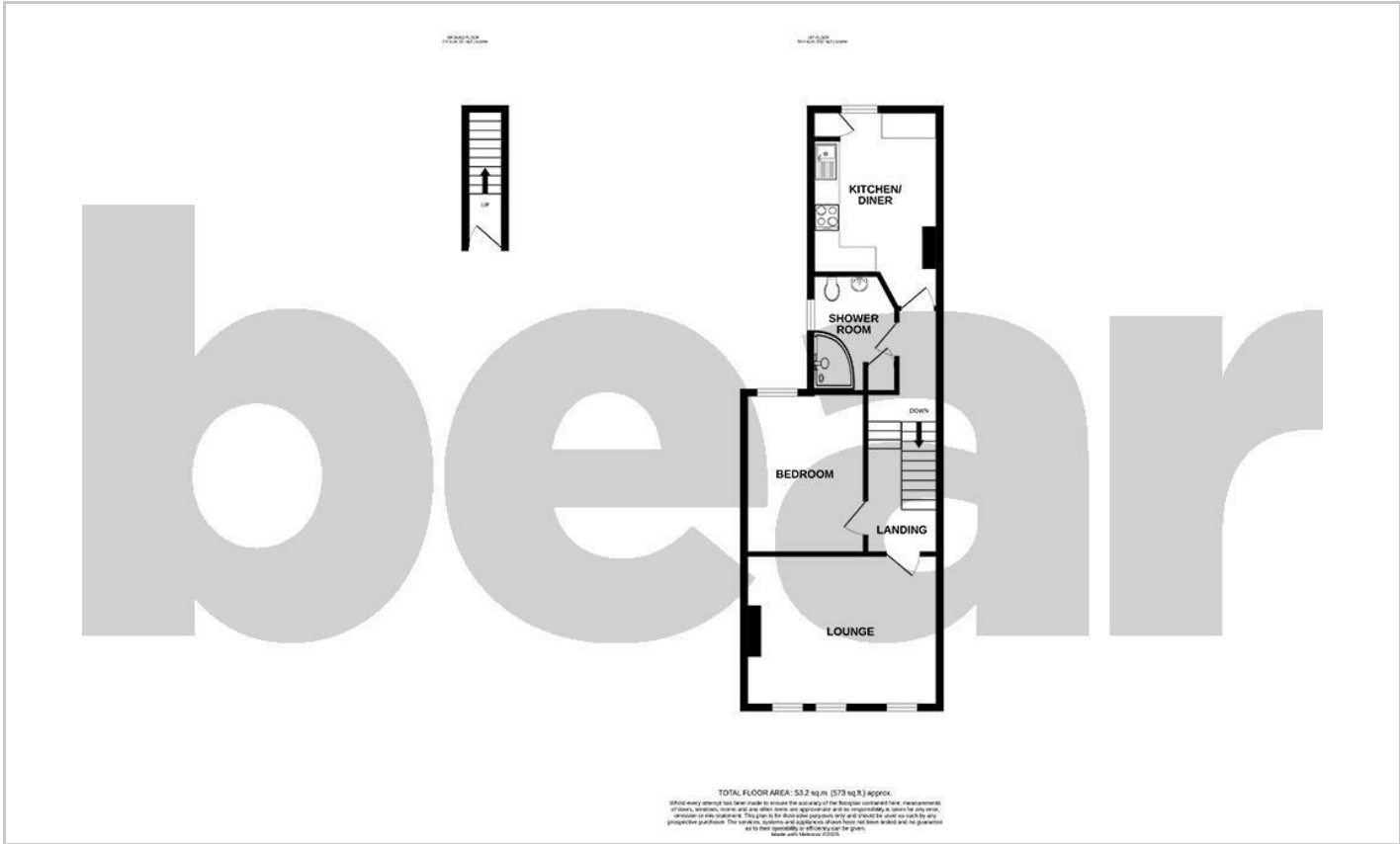
Shower Room

8'10 x 6'5

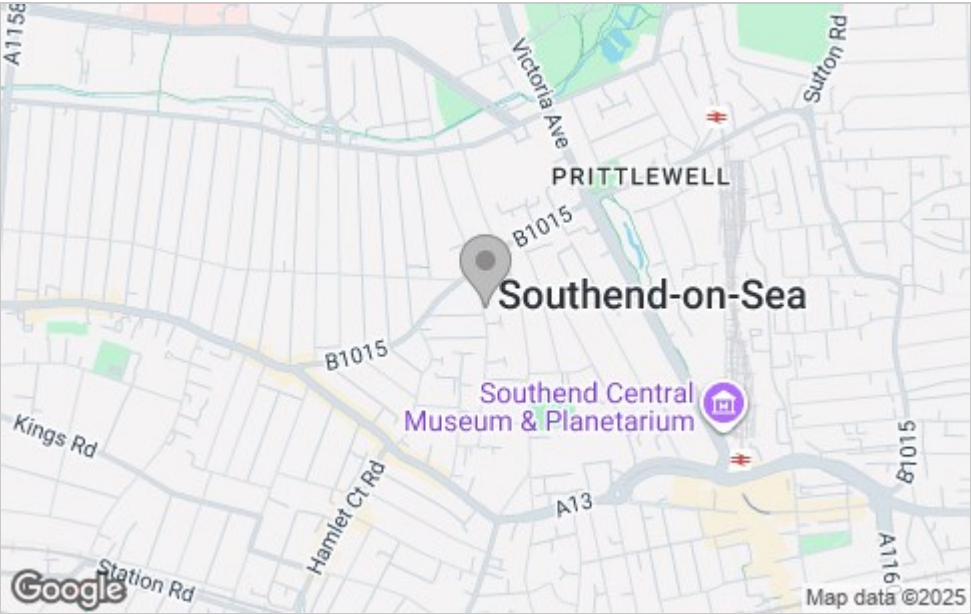
Storage



Floor Plan



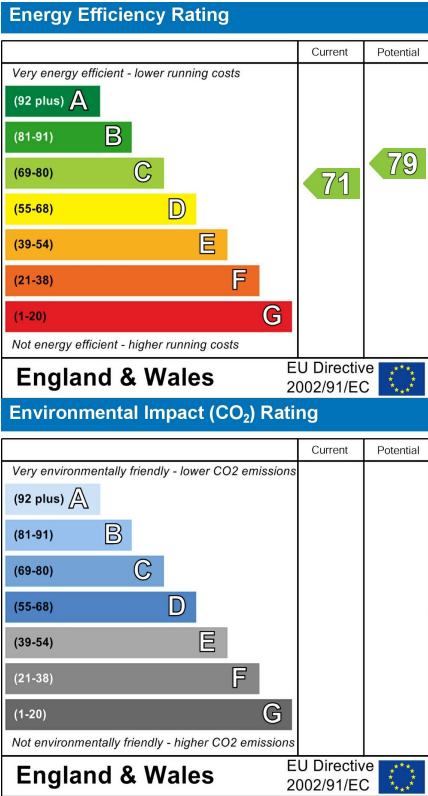
Area Map



Viewing

Please contact our Southend-on-Sea Office on 01702 811211 if you wish to arrange a viewing appointment for this property or require further information.

Energy Efficiency Graph



These particulars, whilst believed to be accurate are set out as a general outline only for guidance and do not constitute any part of an offer or contract. Intending purchasers should not rely on them as statements of representation of fact, but must satisfy themselves by inspection or otherwise as to their accuracy. No person in this firms employment has the authority to make or give any representation or warranty in respect of the property.

204 Woodgrange Drive, Southend-on-Sea, Essex, SS1 2SJ

Office: 01702 811211 info@bearestateagents.co.uk <https://www.bearestateagents.co.uk>