



* Guide Price - £400,000 - £425,000 *

Bear Estate Agents are thrilled to offer for sale this well-presented four bedroom semi-detached home, boasting generous living space across three floors, modern interiors throughout, and an extensive rear garden. Perfectly suited to growing families, the property also benefits from off-street parking for four/five vehicles and a sought-after location in Rochford, close to local schools, shops, and convenient transport links.

Ashingdon Road

Rochford

£400,000

Price Guide

- Four well-proportioned bedrooms across three floors
- Spacious kitchen/family room with centre island
- Ground floor bedroom with en-suite WC
- Extensive rear garden, mainly laid to lawn
- Ideal family location close to schools and amenities
- Generous lounge with feature brick fireplace
- Bi-folding doors opening to rear garden
- Modern first floor shower room
- Off-street parking for four/five vehicles
- Easy access to Rochford Station and transport links



Ashingdon Road



This superb family home opens with a welcoming porch and entrance hall, leading into a spacious lounge complete with a charming brick-built feature fireplace. The heart of the home is a beautifully designed kitchen/family room, offering a large centre island, ample space for dining and relaxing, and bi-folding doors that open directly onto the rear garden—ideal for indoor-outdoor living. A ground floor bedroom with an en-suite WC provides great versatility, perfect for guests or multi-generational living. Upstairs, the first floor hosts two generously sized double bedrooms and a stylish modern shower room, while the second floor offers a further double bedroom, creating a perfect private space for teens or a home office. The rear garden is an impressive size and mostly laid to lawn, ideal for entertaining, relaxing, or play. To the front, the driveway offers off-street parking for multiple vehicles.

Situated on the ever-popular Ashingdon Road, this home is ideally located close to Rochford town centre, which offers a range of amenities, cafes, and shops. Well-regarded local schools are nearby, making this a brilliant area for families. Rochford Train Station is easily accessible, providing direct links into London Liverpool Street, while the A127 and Southend Airport are also within a short drive. The property enjoys the balance of suburban living with great connectivity.

Four Bedroom Semi-Detached House

Porch

Entrance Hall

13'3 x 5'5

Lounge

11'5 x 10'9

Kitchen/Family Room

21'7 x 18'7

Bedroom Three

14'0 x 6'0

Ensuite WC

6'0 x 3'2

First Floor Landing

16'3 x 5'5

Bedroom One

12'0 x 10'11

Bedroom Two

11'9 x 10'6

Shower Room

7'6 x 5'10

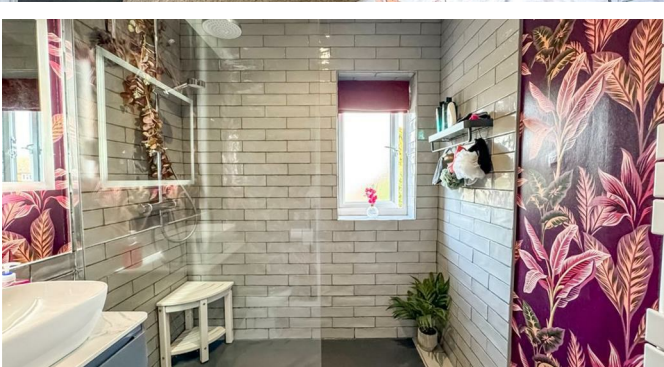
Second Floor Landing

Bedroom Four

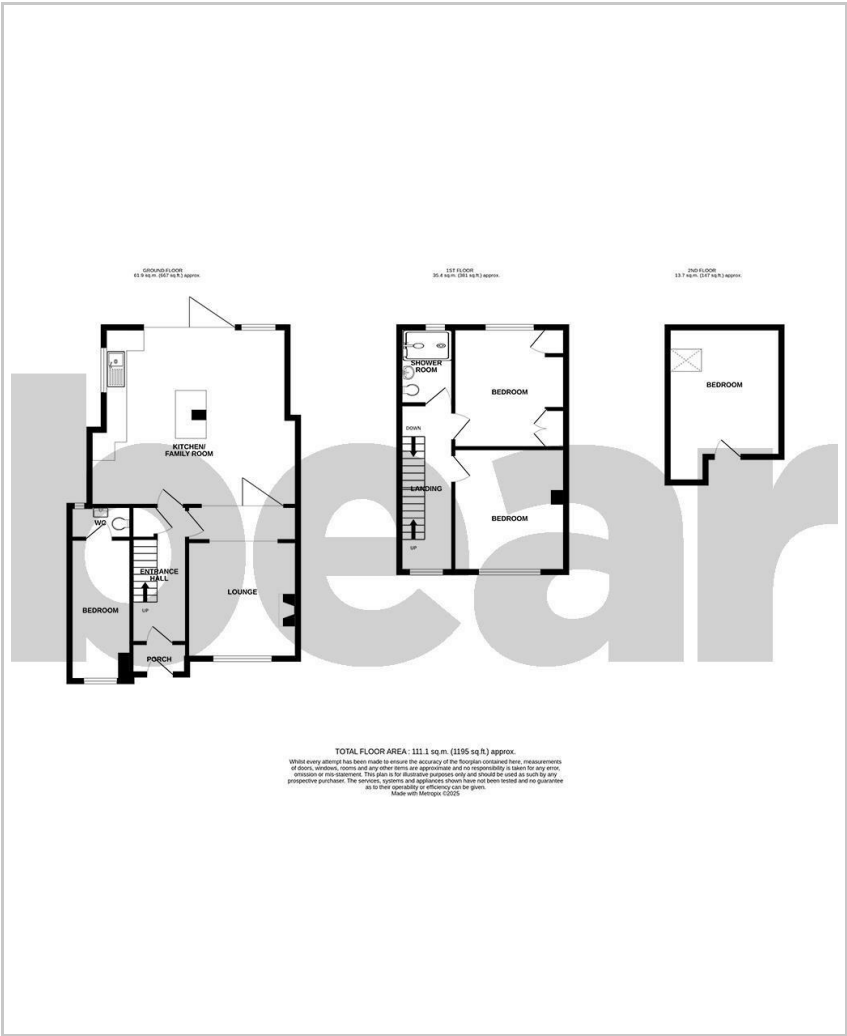
15'0 x 11'0

Garden

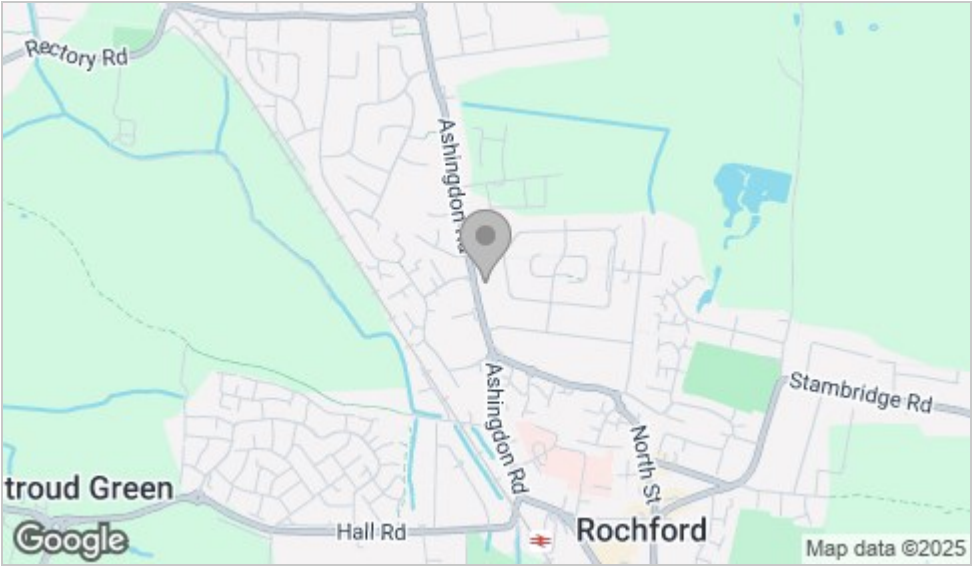
Off-Street Parking



Floor Plan



Area Map



Viewing

Please contact our Southend-on-Sea Office on 01702 811211 if you wish to arrange a viewing appointment for this property or require further information.

These particulars, whilst believed to be accurate are set out as a general outline only for guidance and do not constitute any part of an offer or contract. Intending purchasers should not rely on them as statements of representation of fact, but must satisfy themselves by inspection or otherwise as to their accuracy. No person in this firm's employment has the authority to make or give any representation or warranty in respect of the property.

204 Woodgrange Drive, Southend-on-Sea, Essex, SS1 2SJ

Office: 01702 811211 info@bearestateagents.co.uk <https://www.bearestateagents.co.uk>

Energy Efficiency Graph

