

bear

Estate Agents



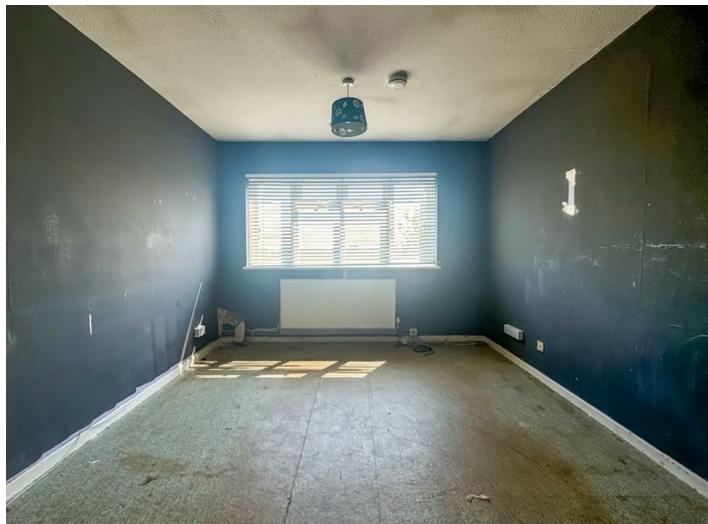
Glebe Close

Great Wakering

£180,000



Glebe Close



Description

* No Onward Chain * A spacious two bedroom first floor flat requiring refurbishment, offering fantastic potential and open farmland views, situated within easy reach of Shoeburyness, Thorpe Bay and village amenities.

- Two-bedroom first-floor flat
- Spacious lounge with open farmland views
- Additional utility room
- Two good-sized bedrooms with built-in storage
- Ample off-street parking to the front
- In need of refurbishment – ideal investment opportunity
- Separate kitchen with ample cupboard space
- Three piece bathroom
- Generous Rear Garden
- Conveniently located near village centre and Shoeburyness/Thorpe Bay



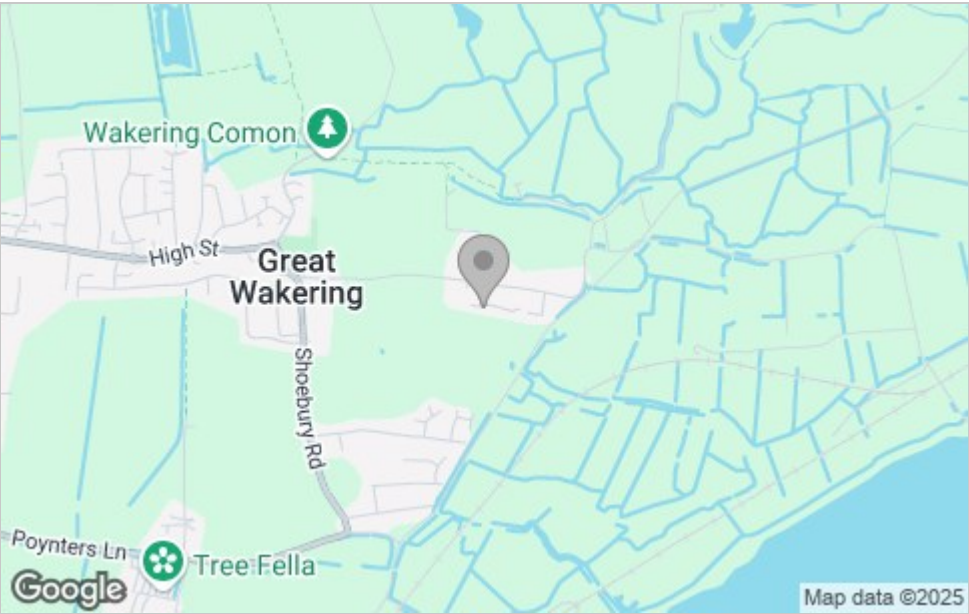
Great Woking



Floor Plan



Area Map



Viewing

Please contact our Southend-on-Sea Office on 01702 811211 if you wish to arrange a viewing appointment for this property or require further information.

These particulars, whilst believed to be accurate are set out as a general outline only for guidance and do not constitute any part of an offer or contract. Intending purchasers should not rely on them as statements of representation of fact, but must satisfy themselves by inspection or otherwise as to their accuracy. No person in this firms employment has the authority to make or give any representation or warranty in respect of the property.

204 Woodgrange Drive, Southend-on-Sea, Essex, SS1 2SJ

Office: 01702 811211 info@bearestateagents.co.uk <https://www.bearestateagents.co.uk>

Energy Efficiency Graph

