



Bear Estate Agents are understandably enthused to bring to the market, with NO ONWARD CHAIN, this exquisite three-bedroom PENTHOUSE with BREATHTAKING ESTUARY VIEWS. The spectacular outlook is a priceless feature year-round from the height of summer to the depth of winter. The accommodation is deceptively spacious throughout and there is direct and exclusive lift access into your luxurious living space.

Parade Walk

Shoeburyness

£1,200,000

- Direct And Exclusive Lift Access Into Living Space
- Master Bedroom 18'11 x 13'11 With En Suite 9'8 x 6'11, Bedroom Two 14'7 x 9'8 Plus Bedroom Three 11'7 x 9'11
- Open Plan Living Space 29'4 x 28'4
- Huge South Facing Balcony 27'11 x 12'1 Plus Further Balcony To The Rear 31'6 x 7'
- Beachfront Location Within Walking Distance To Local Shops, Amenities & Rail Links Into London
- Luxury Three Bedroom Penthouse With Breathtaking & Uninterrupted Views Of The Estuary
- Family Bathroom Suite 7'1 x 7'
- Kitchen 12'6 x 12'5 Plus Utility 6'2 x 5'2
- Two Allocated & Secure Parking Spaces
- No Onward Chain



Parade Walk



Internally this incredible home is as unique as it is luxurious with the first priceless feature being the exclusive and direct lift access straight into the living accommodation. All homes have access to the lift but the new owner will have direct lift access into their new home. Of course, alongside the lift access is also stair access should this be desired.

Once out of the lift and within the property you will be greeted by the striking and spacious entrance hall which is flooded with natural light and provides access to all of the remaining living accommodation.

Worthy of special mention is the stunning open-plan living space which perfectly incorporates the living, dining and kitchen areas all into one. The kitchen measures 12'6 x 12'5 with a feature island and access into the utility room, a further 6'2 x 5'2.

The open plan living and dining space measures an incredible 29'4 x 28'4 with floor-to-ceiling windows offering uninterrupted and far-reaching views over the estuary which are a priceless feature year-round, from the depths of winter through to height of summer. The open plan living space offers the perfect environment in which to both entertain and relax.

The master bedroom measures 18'11 x 13'1 with fitted wardrobes and an en suite bathroom which measures 9'8 x 6'11, bedroom two 14'7 x 9'8 plus bedroom three which measures a further 11'7 x 9'11. All bedrooms are comfortable double bedrooms which is a fine feature within itself.

The bathroom suite measures 7'1 x 7'.

There are two large balconies, one to the front, again profiting from breathtaking views, southerly facing and one to the rear. Both balconies are accessible off of the living space whilst the balcony to the front is also accessible off of the entrance hall and master bedroom.

Situated within the highly sought-after Shoebury Garrison which is within walking distance of local shops and amenities plus rail links direct into London.

Being sold with NO ONWARD CHAIN, internal viewings come strongly recommended so that one can appreciate and acknowledge first-hand the time, care and attention to detail the current owners have invested into bringing this home as close to perfect as possible.

Leasehold - 103 Years Remaining.
Service & Maintenance -
Ground Rent - £150 PA.
Council Tax Band F.

Direct & Exclusive Lift Access Into Living Space

Luxurious Three Bedroom Penthouse

Striking & Spacious Entrance Hall

Master Bedroom

18'11 x 13'1

En Suite

9'8 x 6'11

Bedroom Two

14'7 x 9'8

Bedroom Three

11'7 x 9'11

Bathroom Suite

7'1 x 7'

Incredible Open Living Space

29'4 x 28'4

Kitchen

12'6 x 12'5

Utility Room

6'2 x 5'2

Huge South Facing Balcony

27'11 x 12'1

Further Balcony To The Rear

31'6 x 7'

Breathtaking & Uninterrupted Views

Allocated Secure Parking

Beachfront Location

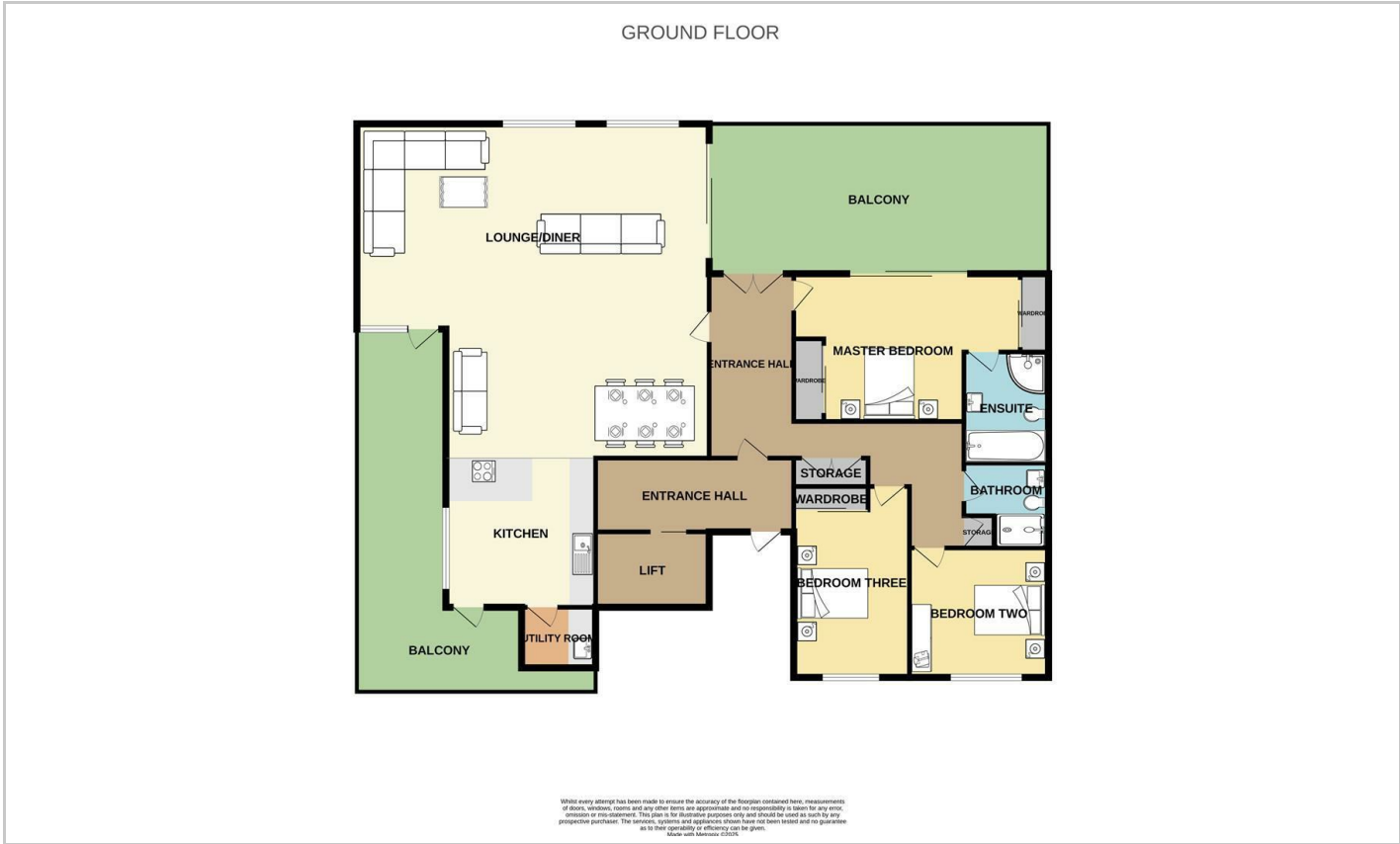
Walking Distance To Local Shops & Amenities

Walking Distance To Rail Links Into London

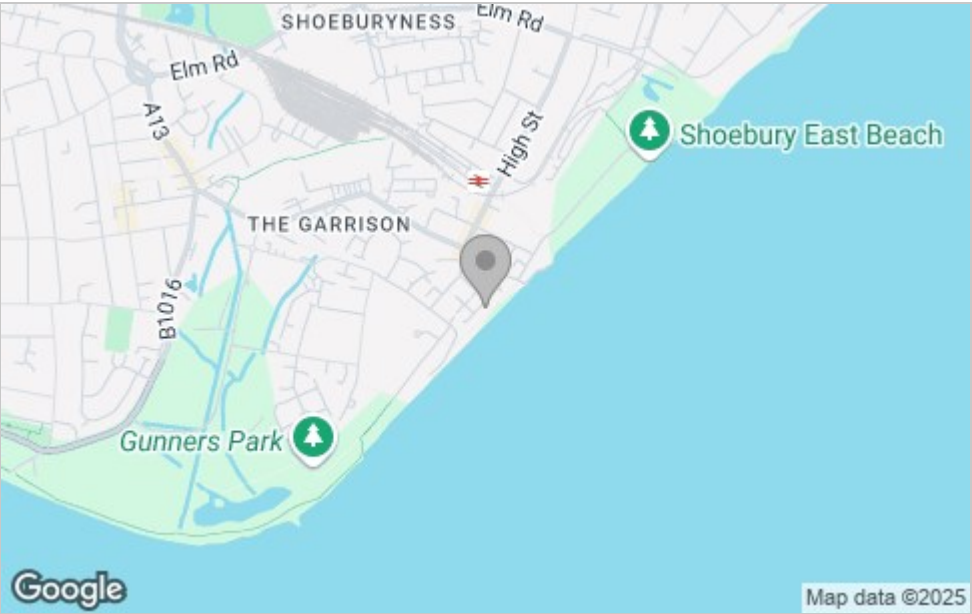
No Onward Chain



Floor Plan



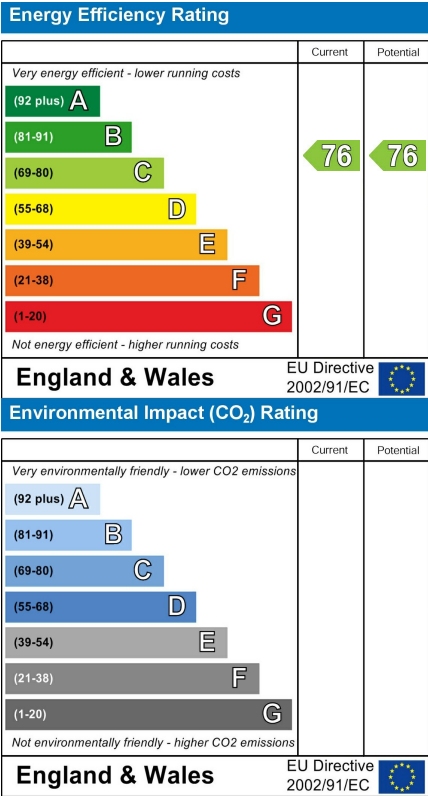
Area Map



Viewing

Please contact our Southend-on-Sea Office on 01702 811211 if you wish to arrange a viewing appointment for this property or require further information.

Energy Efficiency Graph



These particulars, whilst believed to be accurate are set out as a general outline only for guidance and do not constitute any part of an offer or contract. Intending purchasers should not rely on them as statements of representation of fact, but must satisfy themselves by inspection or otherwise as to their accuracy. No person in this firms employment has the authority to make or give any representation or warranty in respect of the property.

204 Woodgrange Drive, Southend-on-Sea, Essex, SS1 2SJ

Office: 01702 811211 info@beaurestateagents.co.uk <https://www.beaurestateagents.co.uk>