

Warrior Square North

Southend-on-Sea

£170,000

Price Guide



1



1



1



c

Warrior Square North

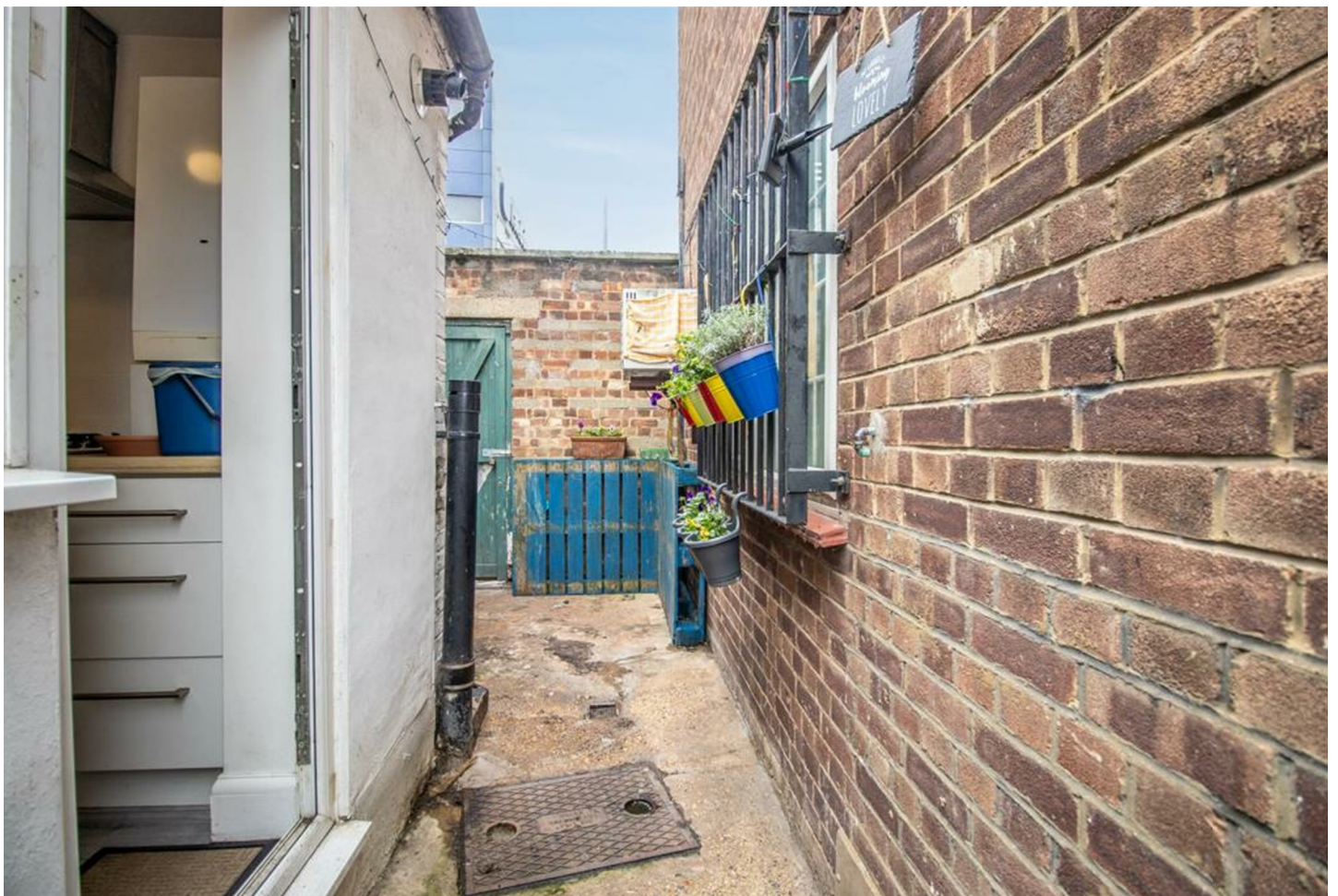


Description

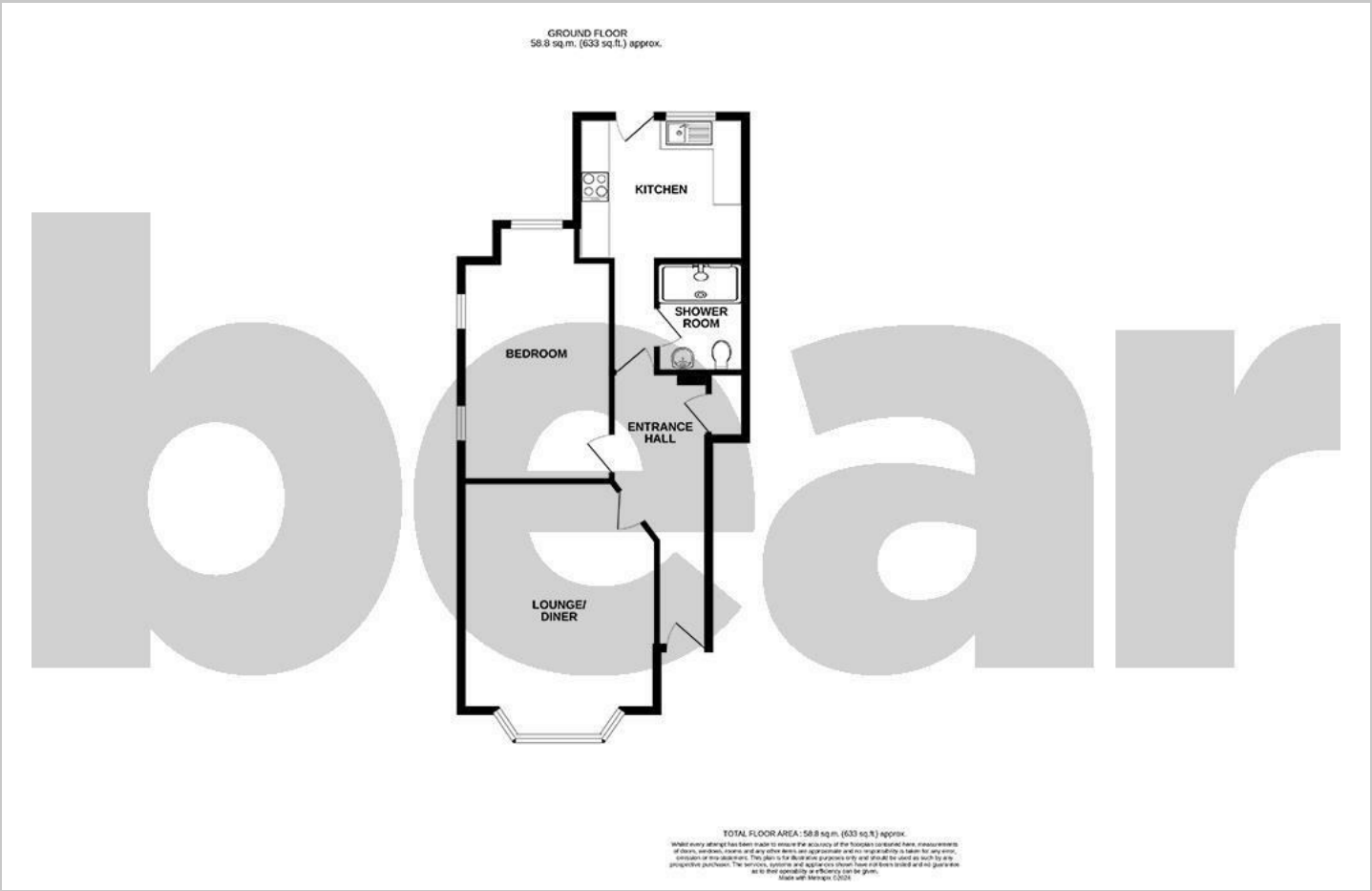
* £170,000 - £180,000 * Well presented one bedroom ground floor flat in the centre of Southend's City Centre. Positioned within minutes of excellent amenities, convenient bus links and two major rail links. Also within walking distance of the seafront.

- Well Presented Ground Floor Flat
- Good-Sized Kitchen
- Three Piece Shower Room
- Triple Glazing and Gas Central Heating
- Convenient Access to the C2C and Greater Anglia Train Lines
- Bay Fronted Lounge/Diner
- One Double Bedroom
- Private Courtyard Garden
- Communal Off-Street Parking to the Rear
- Walking Distance to Ample Shops and Eateries





Floor Plan



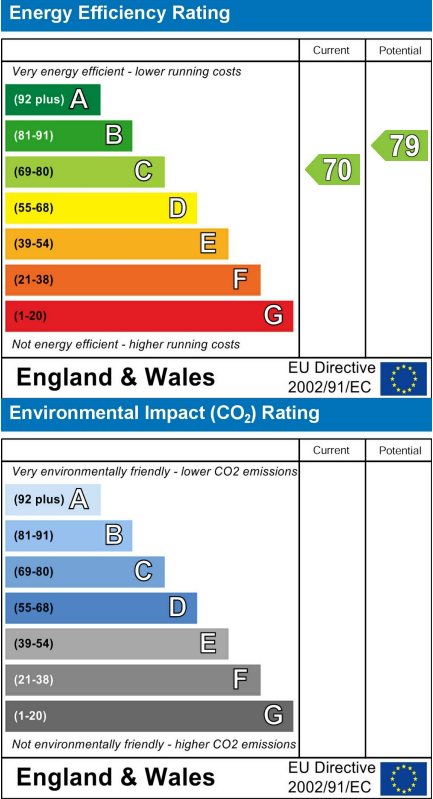
Area Map



Viewing

Please contact our Southend-on-Sea Office on 01702 811211 if you wish to arrange a viewing appointment for this property or require further information.

Energy Efficiency Graph



These particulars, whilst believed to be accurate are set out as a general outline only for guidance and do not constitute any part of an offer or contract. Intending purchasers should not rely on them as statements of representation of fact, but must satisfy themselves by inspection or otherwise as to their accuracy. No person in this firm's employment has the authority to make or give any representation or warranty in respect of the property.

204 Woodgrange Drive, Southend-on-Sea, Essex, SS1 2SJ

Office: 01702 811211 info@bearestateagents.co.uk <https://www.bearestateagents.co.uk>