

bear

Estate Agents



Gordon Road

Southend-on-Sea

£160,000

Price Guide



1



1



1



c

Gordon Road

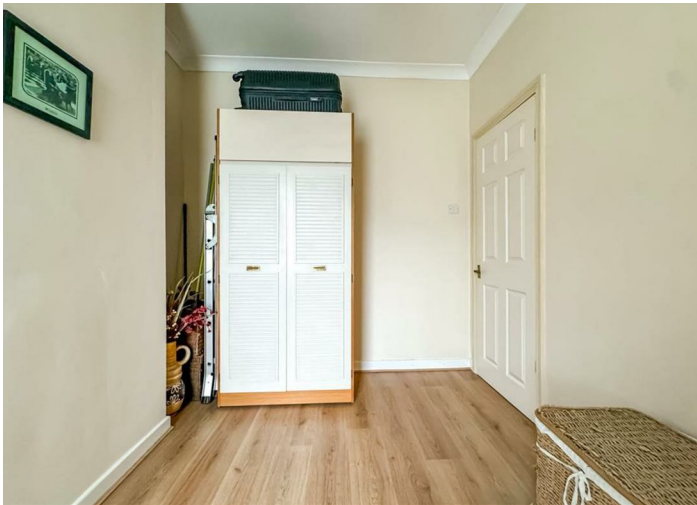


Description

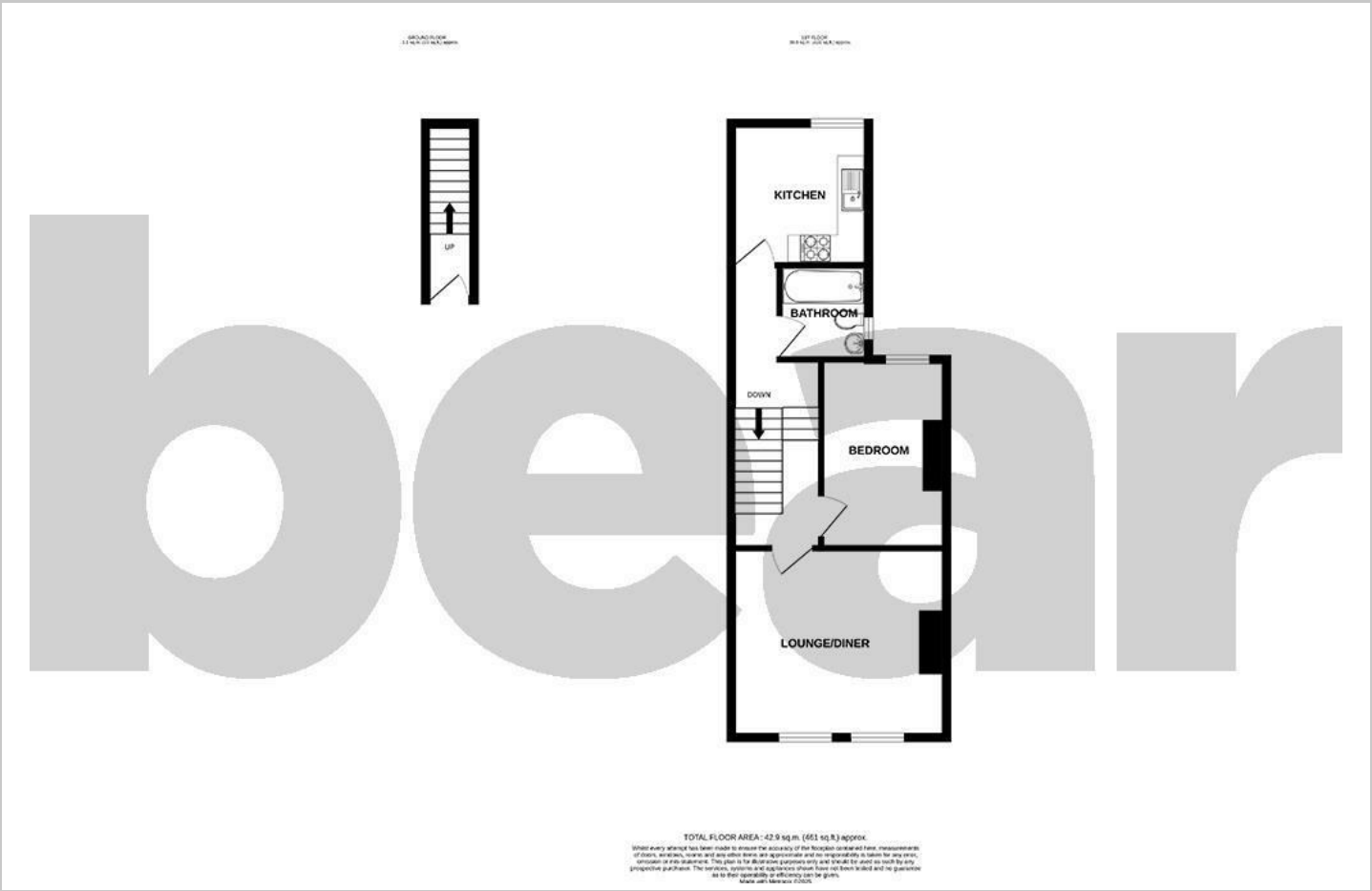
****GUIDE PRICE - £160,000 TO £170,000**** Bear Estate Agents are delighted to present this beautifully maintained one bedroom first floor flat, ideally situated in the heart of Southend-on-Sea. With modern interiors, generous living space and a long lease, this stylish home is perfect for first-time buyers or savvy investors.

- Spacious first floor flat
- Large lounge/diner with natural light
- Modern three-piece bathroom
- Double glazing throughout
- Central location close to amenities and transport
- One well-proportioned double bedroom
- Stylish kitchen with integrated oven
- Gas central heating
- Long Lease
- City centre location

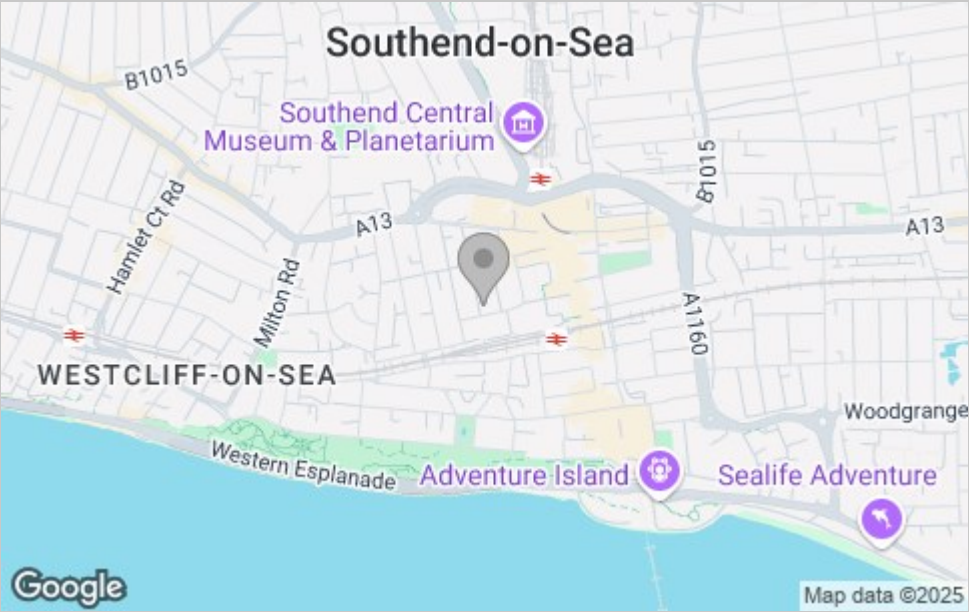




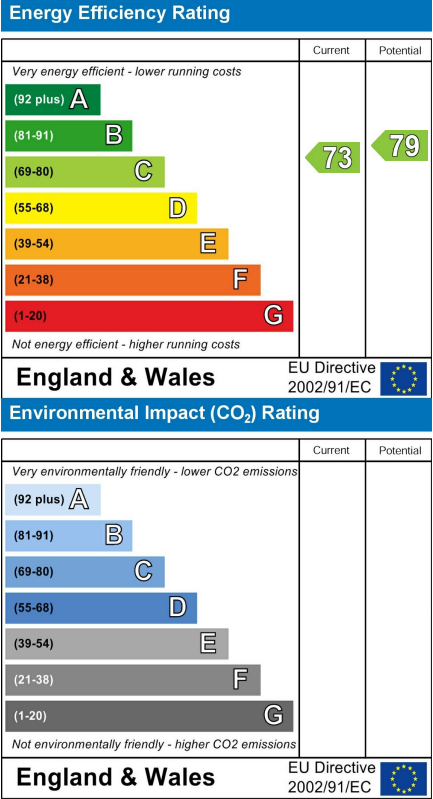
Floor Plan



Area Map



Energy Efficiency Graph



Viewing

Please contact our Southend-on-Sea Office on 01702 811211 if you wish to arrange a viewing appointment for this property or require further information.

These particulars, whilst believed to be accurate are set out as a general outline only for guidance and do not constitute any part of an offer or contract. Intending purchasers should not rely on them as statements of representation of fact, but must satisfy themselves by inspection or otherwise as to their accuracy. No person in this firm's employment has the authority to make or give any representation or warranty in respect of the property.

204 Woodgrange Drive, Southend-on-Sea, Essex, SS1 2SJ

Office: 01702 811211 info@bearestateagents.co.uk <https://www.bearestateagents.co.uk>