



\* £250,000 - £270,000 \* Bear Estate Agents are delighted to present this charming two bedroom first-floor flat on Chester Avenue, offering a perfect blend of modern comfort and coastal living. With a spacious lounge, well-equipped kitchen and a private rear garden, this home is ideal for first-time buyers, professionals, or those seeking a seaside retreat.

- First Floor Flat with a Share of Freehold
- Modern Kitchen with a Breakfast Bar
- Well-Maintained Bathroom
- Side Access
- Short Walk to Southend East Train Station
- Spacious Lounge with a Feature Fireplace and a Bay Window
- Two Bright and Airy Bedrooms
- Private Rear Garden with Decking
- Prime Location Close to Southchurch Park and Thorpe Bay Seafront
- Close to Excellent Schools and Amenities

## Chester Avenue

Southend-on-Sea

**£250,000**

Price Guide





# Chester Avenue



Internally, this well-maintained home boasts a bright and airy lounge, providing plenty of space for relaxation and entertaining. The modern kitchen is designed for convenience, with generous storage and worktop space. Two well-proportioned bedrooms offer comfortable living, while the stylish bathroom features contemporary finishes. A private rear garden, complete with a decked seating area and secure side-gated access, enhances the property's appeal, making it ideal for outdoor gatherings and relaxation.

Nestled in the heart of Southend-on-Sea, this property enjoys a fantastic location just moments from Southchurch Park and Thorpe Bay Beach, offering scenic walks and a vibrant coastal lifestyle. Southend East Train Station is within easy reach, providing direct connections to London Fenchurch Street, making it ideal for commuters. Nearby, a variety of shops, restaurants, and leisure facilities cater to all needs, while well-regarded schools such as Greenways Primary and Southchurch High School add to the area's family-friendly appeal.

## **Two Bedroom First Floor Flat**

### **Share of Freehold**

### **Landing**

### **Lounge**

17'5 x 12'5

### **Kitchen/Breakfast Room**

12'0 x 8'9

### **Bedroom One**

12'4 x 12'0

### **Bedroom Two**

8'7 x 8'5

### **Three Piece Bathroom**

8'8 x 7'8

### **Garden**

### **Side Access**

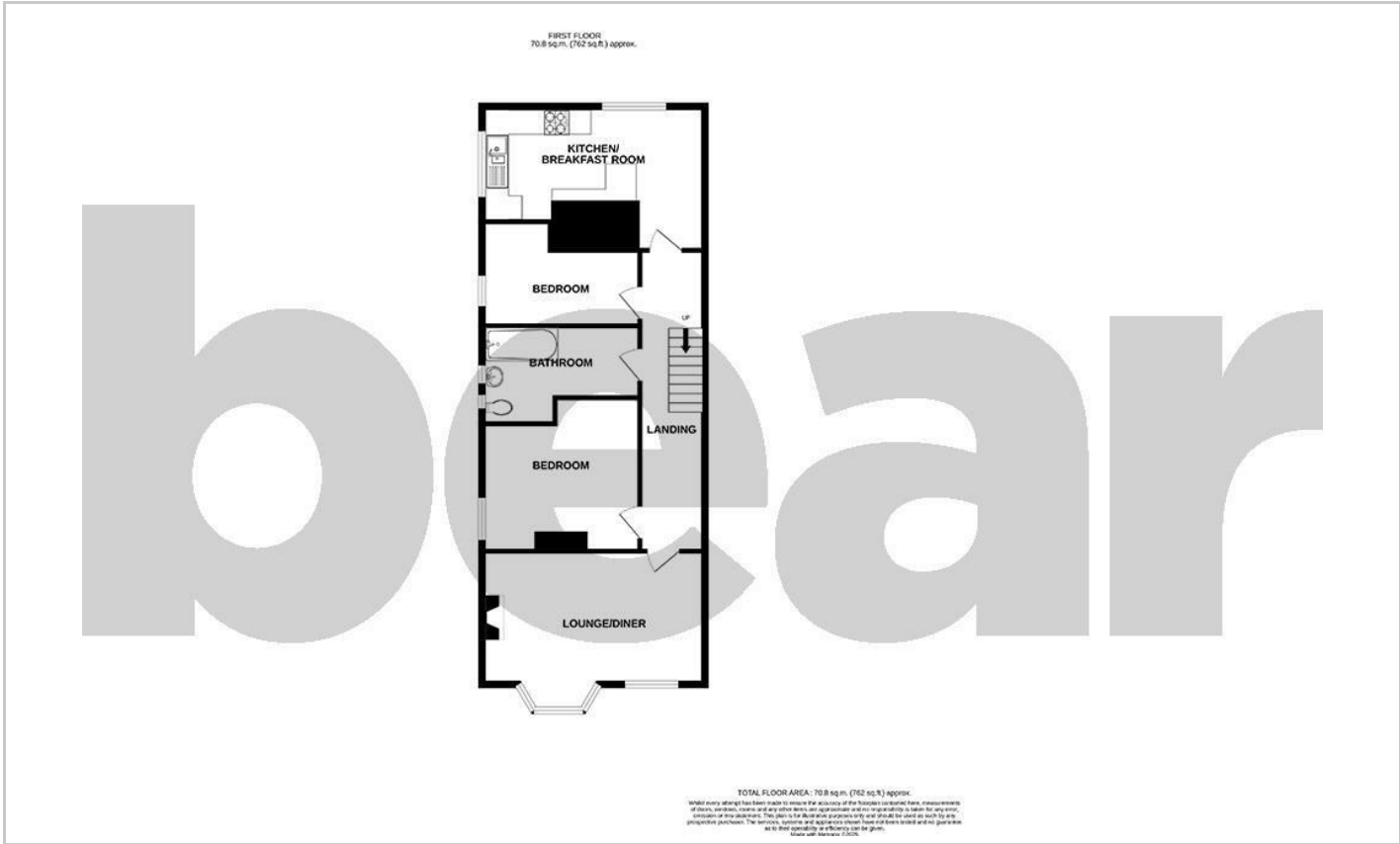




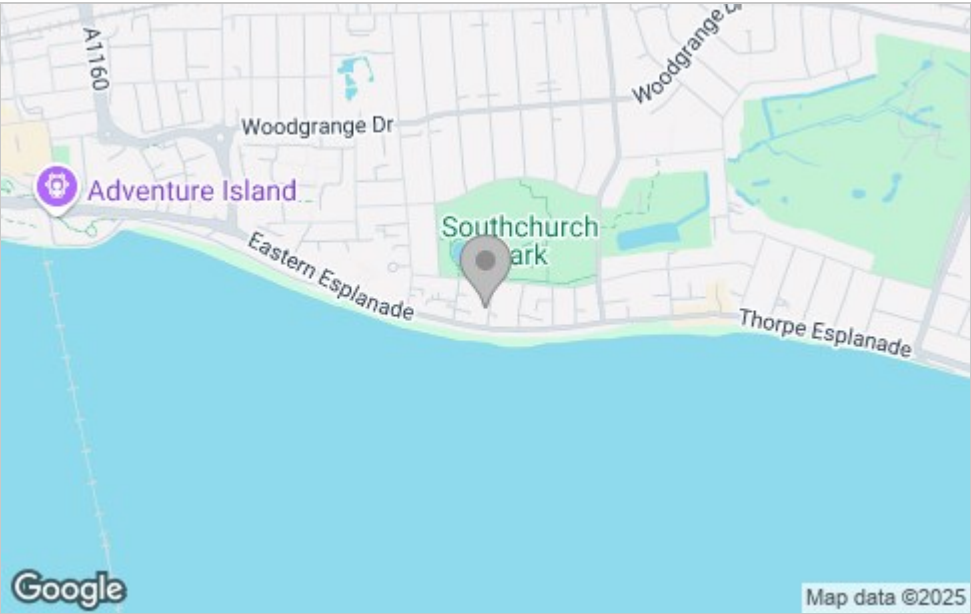
# Chester Avenue Southend-on-Sea Essex



Floor Plan



Area Map



Viewing

Please contact our Southend-on-Sea Office on 01702 811211 if you wish to arrange a viewing appointment for this property or require further information.

These particulars, whilst believed to be accurate are set out as a general outline only for guidance and do not constitute any part of an offer or contract. Intending purchasers should not rely on them as statements of representation of fact, but must satisfy themselves by inspection or otherwise as to their accuracy. No person in this firm's employment has the authority to make or give any representation or warranty in respect of the property.

204 Woodgrange Drive, Southend-on-Sea, Essex, SS1 2SJ

Office: 01702 811211 [info@bearestateagents.co.uk](mailto:info@bearestateagents.co.uk) <https://www.bearestateagents.co.uk>

Energy Efficiency Graph

