



* £110,000 - £120,000 * Perfect for first time buyers or buy to let investors. One bedroom top floor flat positioned in a central location, offering prime access to Southend East Train Station, bus connections, excellent amenities, the seafront and Southchurch park.

- Top Floor City Centre Apartment
- Modest Yearly Charges
- Access to Ample Storage
- Easy Reach of Seafront
- Close to the City Centre for Ample Amenities
- Ultra Convenient Location
- Recently Renovated Three Piece Bathroom
- Double Glazing
- Walking Distance of Southend East Train Station
- Excellent Buy to Let Investment of First Time Purchase

Old Southend Road

Southend-on-Sea

£110,000

Price Guide



Old Southend Road



Bear Estate Agents are delighted to bring to the market, this top floor flat, perfect for first time buyers or buy to let investors alike. Inside, the accommodation presents a lounge, which opens into a kitchen, one bedroom and a recently renovated three piece bathroom. Extras include storage space in the entrance hall and landing, double glazing and electric heating.

Old Southend Road is a residential road in Southend-on-Sea, positioned within walking distance of Southend East Train Station, as well as convenient bus links. Also within the area, you will find the picturesque seafront, the iconic Southchurch Park and the city centre, offering an abundance of shops and eateries.

First Floor Flat

Ground Floor Entrance Hall

Landing

Lounge

12'10 x 11'10

Kitchen

8'2 x 3'11

Bedroom

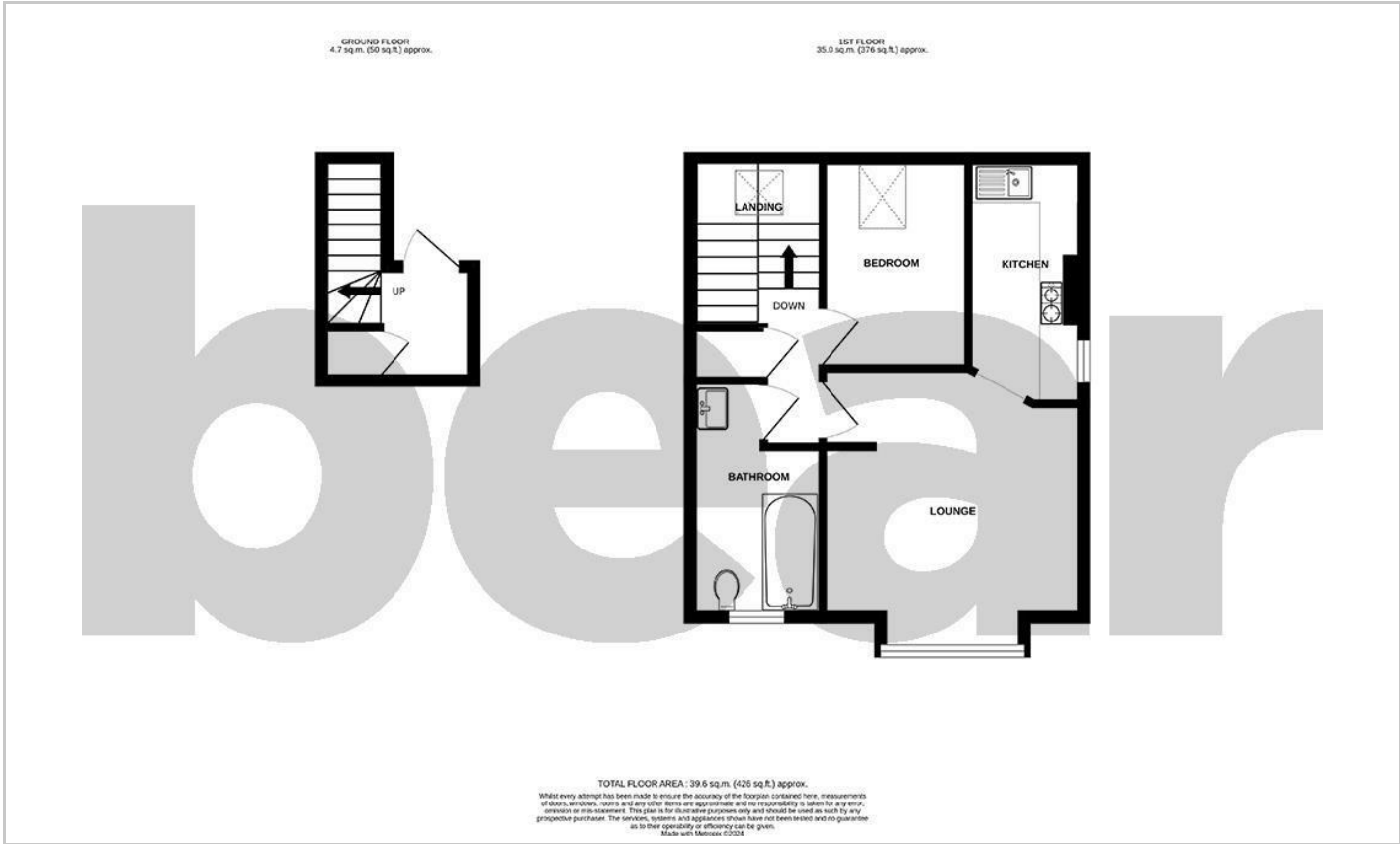
9'6 x 6'7

Bathroom

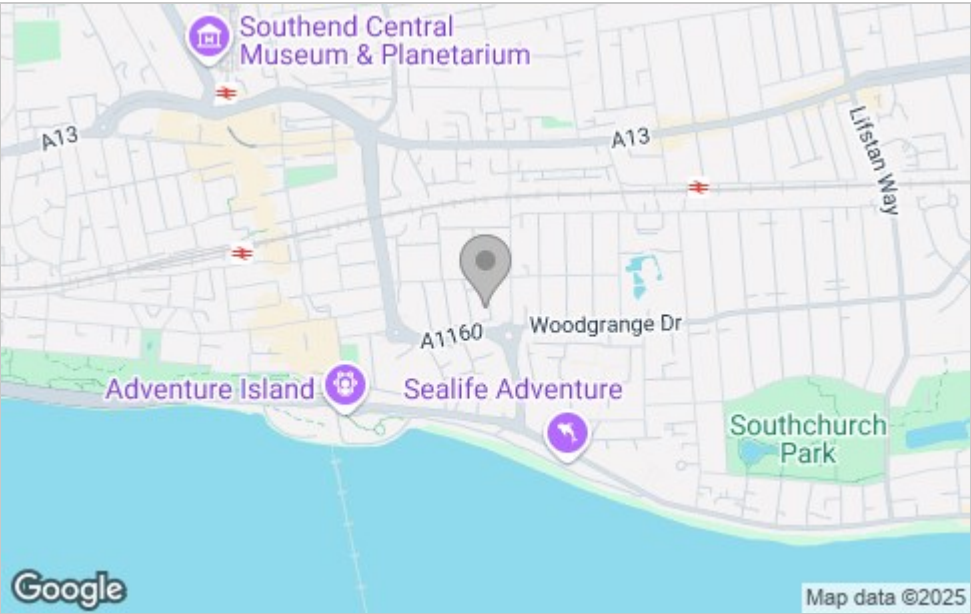
7'10 x 4'11



Floor Plan



Area Map



Viewing

Please contact our Southend-on-Sea Office on 01702 811211 if you wish to arrange a viewing appointment for this property or require further information.

These particulars, whilst believed to be accurate are set out as a general outline only for guidance and do not constitute any part of an offer or contract. Intending purchasers should not rely on them as statements of representation of fact, but must satisfy themselves by inspection or otherwise as to their accuracy. No person in this firm's employment has the authority to make or give any representation or warranty in respect of the property.

204 Woodgrange Drive, Southend-on-Sea, Essex, SS1 2SJ

Office: 01702 811211 info@bearestateagents.co.uk <https://www.bearestateagents.co.uk>

Energy Efficiency Graph

