



Two double bedroom first floor flat offering a spacious bay fronted lounge/diner, a well presented kitchen and access to a larger than average, private rear garden. Ideally appointed within easy reach of local amenities, schools and London Southend Airport.

- First Floor Flat with a Private Entrance
- Well Presented Kitchen
- Three Piece Bathroom
- Double Glazing
- Low Annual Charges
- Sizeable Bay Fronted Lounge/Diner
- Two Double Bedrooms
- Private Rear Garden
- Gas Central Heating
- Close to the A127, Bus Links and London Southend Airport Train Station

Rochford Road

Southend-on-Sea

£240,000



Rochford Road



New to the market is this good-sized first floor flat which benefits from having a large, private rear garden to the rear. Inside, the property accommodates a sizeable bay fronted lounge/diner, a well presented kitchen, two double bedrooms and a three piece bathroom. The flat has double glazing and gas central heating throughout.

Rochford Road is located in a popular residential area in Southend-on-Sea close to London Southend Airport which offers flights to desired destinations, a popular retail park and train access to London. Also within close proximity, you will find convenient bus links, iconic parks, access to the A127 and schools.

Two Bedroom First Floor Flat

Landing

Lounge/Diner

17'9 x 14'9

Kitchen

9'9 x 9'3

Bedroom One

13'0 x 11'0

Bedroom Two

13'0 x 9'4

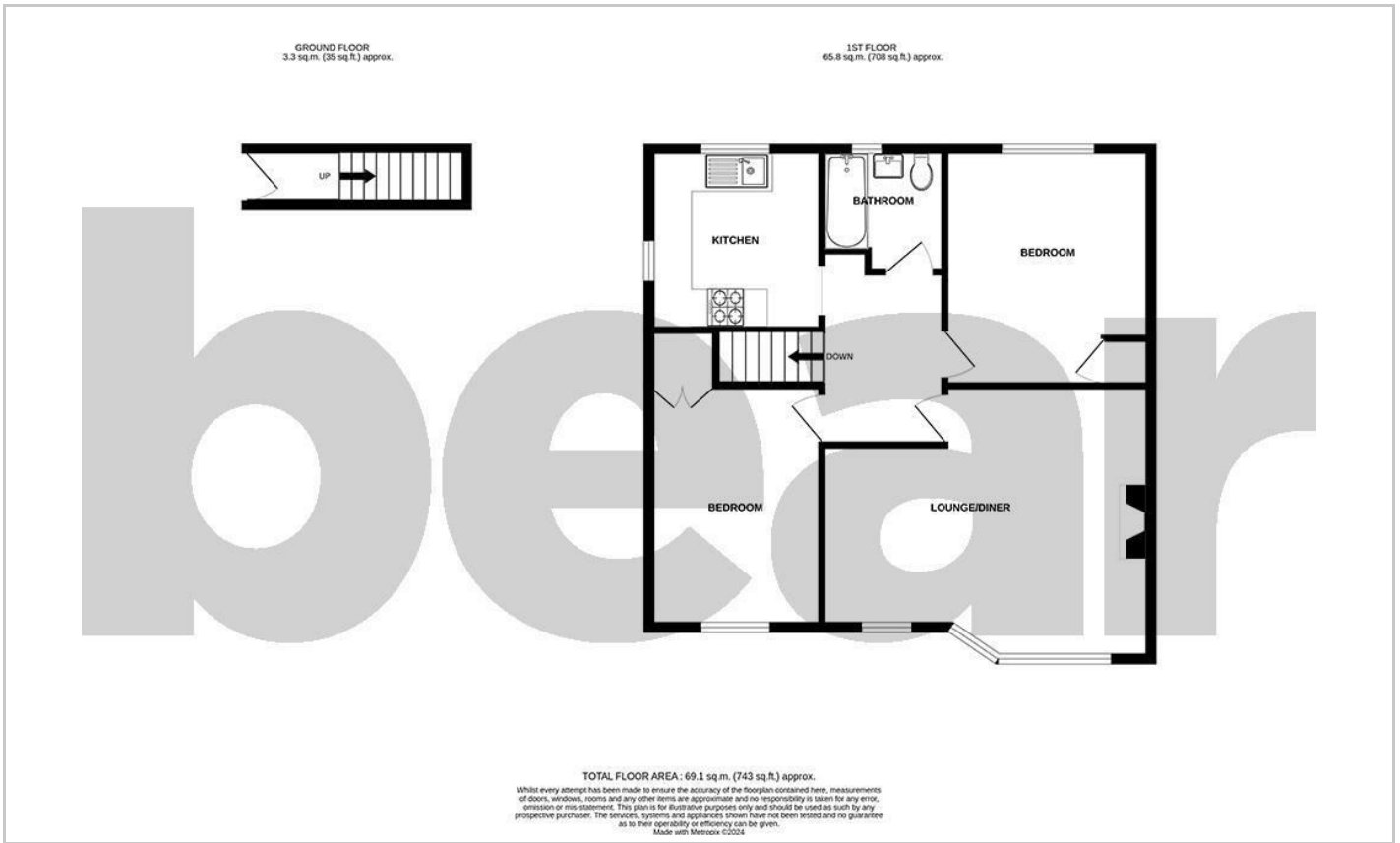
Three Piece Bathroom

6'8 x 5'8

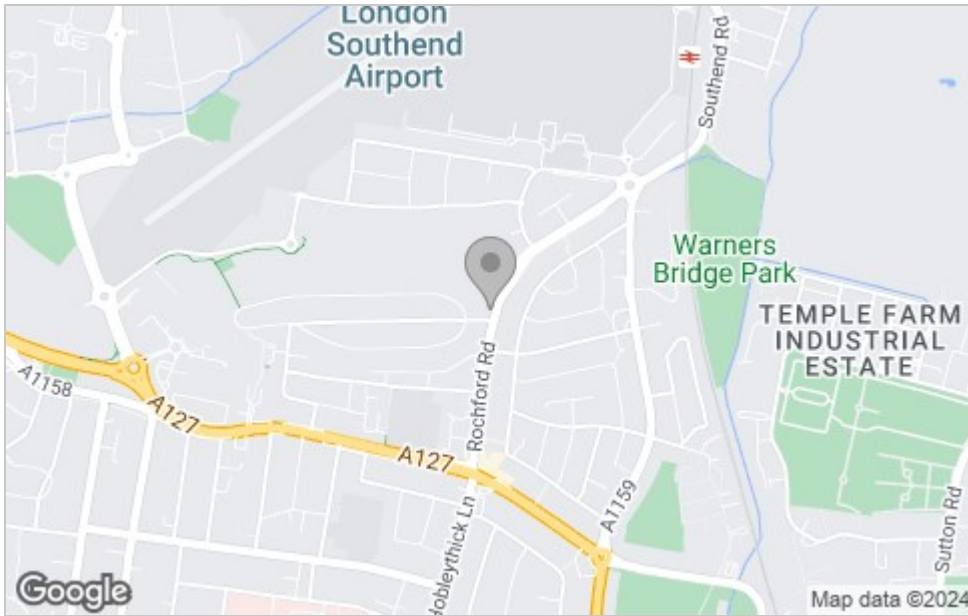
Private Garden



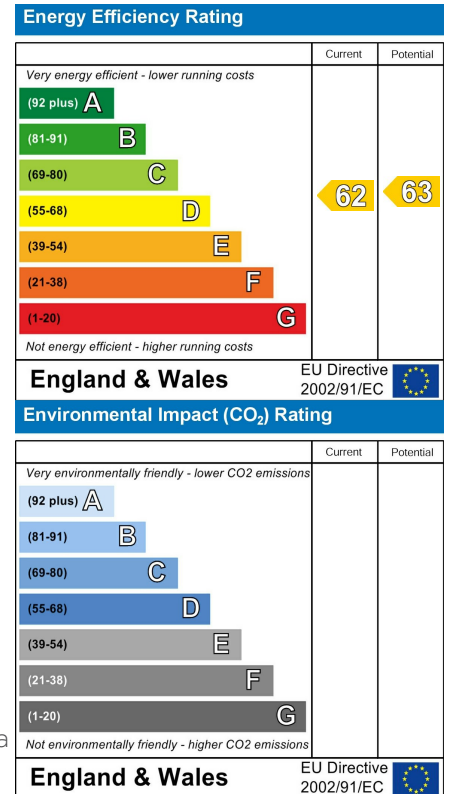
Floor Plan



Area Map



Energy Efficiency Graph



Viewing

Please contact our Southend-on-Sea Office on 01702 811211 if you wish to arrange a viewing appointment for this property or require further information.

These particulars, whilst believed to be accurate are set out as a general outline only for guidance and do not constitute any part of an offer or contract. Intending purchasers should not rely on them as statements of representation of fact, but must satisfy themselves by inspection or otherwise as to their accuracy. No person in this firm's employment has the authority to make or give any representation or warranty in respect of the property.

204 Woodgrange Drive, Southend-on-Sea, Essex, SS1 2SJ

Office: 01702 811211 info@bearestateagents.co.uk <https://www.bearestateagents.co.uk>