



\* Guide Price £350,000 - £375,000 \* Two double bedroom semi-detached bungalow in Rochford close to London Southend Airport, travel links and amenities. Boasts well presented living space throughout with a spacious lounge and kitchen/diner, well presented garden, off-street parking for three vehicles.

- Semi-Detached Bungalow
- Open Plan Kitchen/Diner
- Four Piece Bathroom
- Off-Street Parking for Three Vehicles
- Well Landscaped Garden
- Large Lounge
- Two Double Bedrooms
- Separate w.c
- Double Glazing and Gas Central Heating
- Lovely Residential Location

## Leicester Avenue

Rochford

**£350,000**

Price Guide





# Leicester Avenue



Bear Estate Agents are delighted to bring to the market, this semi-detached bungalow in Rochford. The accommodation has been well presented throughout and comprises a large family lounge, a sizeable kitchen/diner, two double bedrooms, a four piece bathroom and a separate WC. To the rear, you will find a beautifully landscaped garden, with further benefits including off-street parking for three vehicles and a garage.

Leicester Avenue is situated within easy reach of convenient bus links, as well as London Southend Airport for rail access to London and flights to desired destinations. Also within the area, you will find popular amenities, iconic parks and local schools.

## Two Bedroom Semi-Detached Bungalow

### Entrance Hall

### Lounge

15'6 x 11'8

### Kitchen/Diner

20'5 x 10'1

### Bedroom One

13'6 x 12'4

### Bedroom Two

11'10 x 10'5

### Four Piece Bathroom

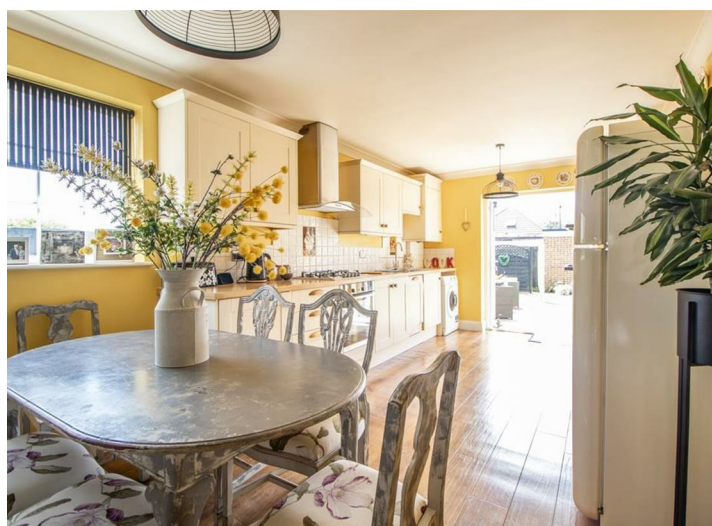
8'1 x 7'0

### WC

7'0 x 2'5

### Garden

### Off-Street Parking

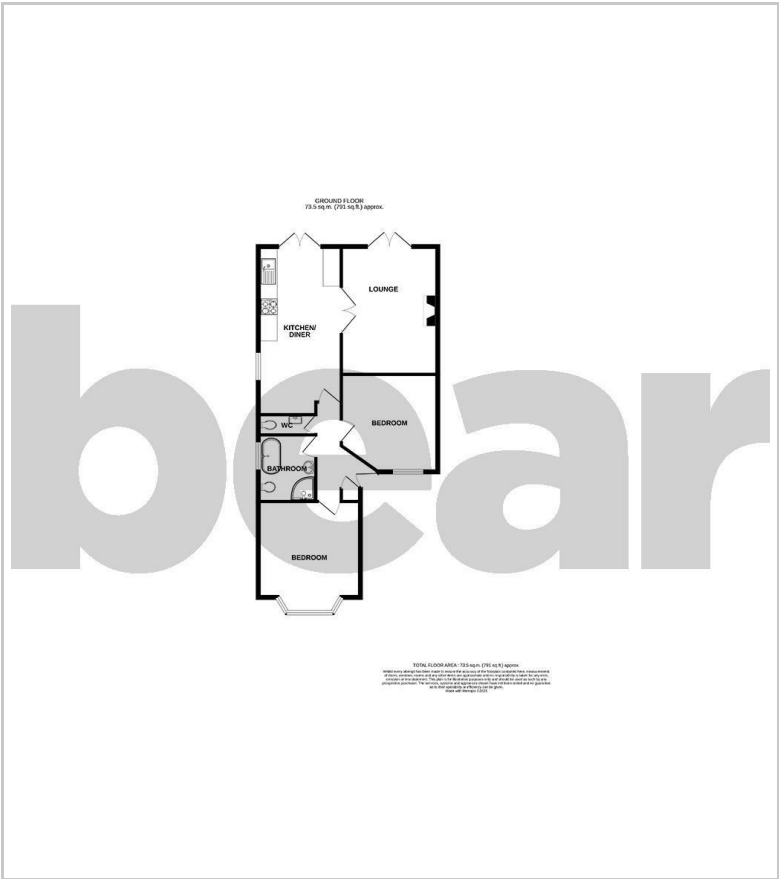




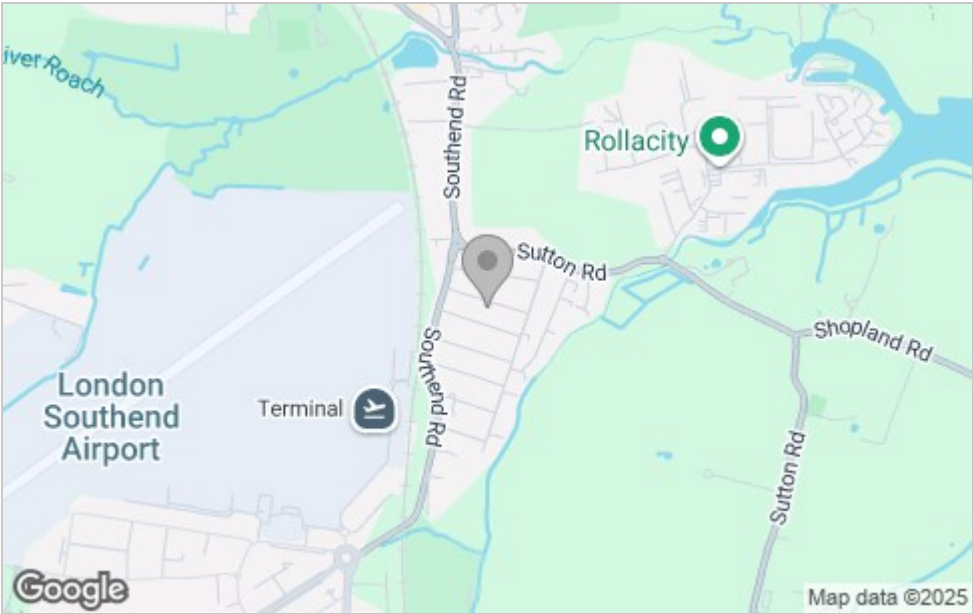




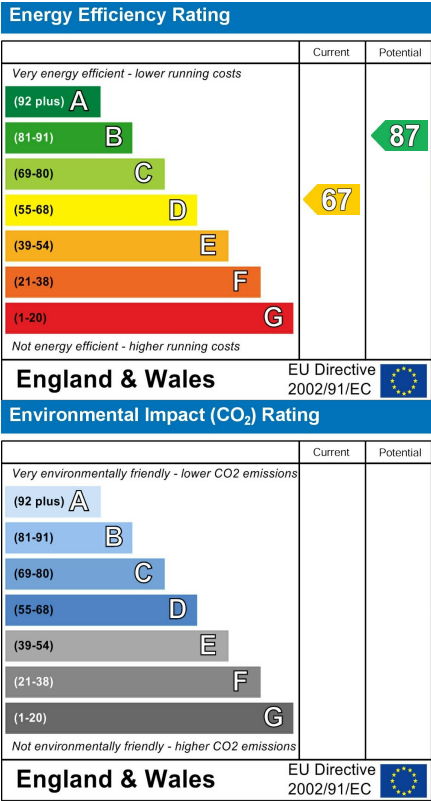
Floor Plan



Area Map



Energy Efficiency Graph



Viewing

Please contact our Southend-on-Sea Office on 01702 811211 if you wish to arrange a viewing appointment for this property or require further information.

These particulars, whilst believed to be accurate are set out as a general outline only for guidance and do not constitute any part of an offer or contract. Intending purchasers should not rely on them as statements of representation of fact, but must satisfy themselves by inspection or otherwise as to their accuracy. No person in this firm's employment has the authority to make or give any representation or warranty in respect of the property.

204 Woodgrange Drive, Southend-on-Sea, Essex, SS1 2SJ

Office: 01702 811211 [info@bearestateagents.co.uk](mailto:info@bearestateagents.co.uk) <https://www.bearestateagents.co.uk>