



* 260FT REAR GARDEN * No Onward Chain * Incredibly spacious semi-detached family home in the heart of Shoeburyness close to the seafront, amenities and schools. Boasting four bedrooms, two reception rooms, off-street parking, a garage and an extensive rear garden measuring approximately 262ft in length. A well-loved family home situated on a sought after road.

- Beautifully Presented Semi-Detached Family Home
- Boasting an Extensive 262ft Rear Garden
- Convenient Ground Floor WC
- Three Piece Bathroom
- Bay Fronted Lounge and a Large Dining Room/Reception Room
- Presented with No Onward Chain
- Modern Kitchen/Breakfast Room
- Four Bedrooms
- Off-Street Parking and a Garage
- Double Glazing and Gas Central Heating

St. Andrews Road

Shoeburyness

£625,000



St. Andrews Road



Bear Estate Agents are thrilled to bring to the market, with no onward chain, this impressive family home, situated on a sought after road in Shoeburyness. St Andrews Road is positioned in the heart of Shoeburyness close to the picturesque seafront and local amenities. There are well-regarded schools within a close distance, as well as access to bus connections and train stations serving London Fenchurch Street Station.

This well presented home accommodates a larger than average entrance porch which leads to an inviting entrance hall, a bay fronted lounge, sizeable dining room/reception room, a modern fitted kitchen/breakfast room and a WC. To the first floor, there are three double bedrooms, one single bedroom and a three piece bathroom. The property further benefits from having ample off-street parking and a garage to the front, double glazing and gas central heating. One of the highlights of this property is the extensive laid to lawn garden which measures approximately 262 ft in length.

Four Bedroom Semi-Detached House

Porch

Entrance Hall

Lounge

16'0 x 15'1

Dining Room/Reception Room

18'11 x 12'11

Kitchen/Breakfast Room

15'9 x 15'1

WC

Landing

Bedroom One

15'1 x 13'6

Bedroom Two

13'1 x 11'4

Bedroom Three

14'6 x 7'0

Bedroom Four

8'3 x 8'0

Bathroom

8'6 x 6'1

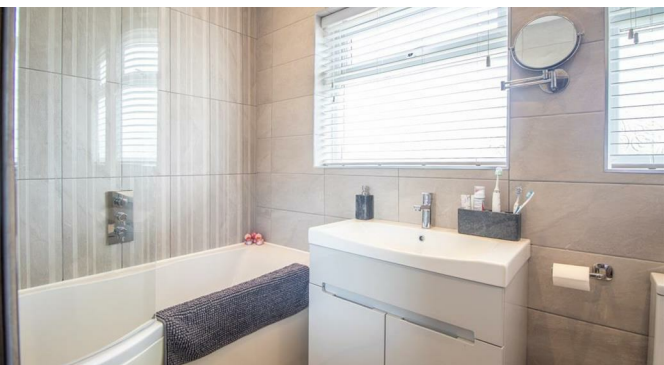
Off-Street Parking

Garage

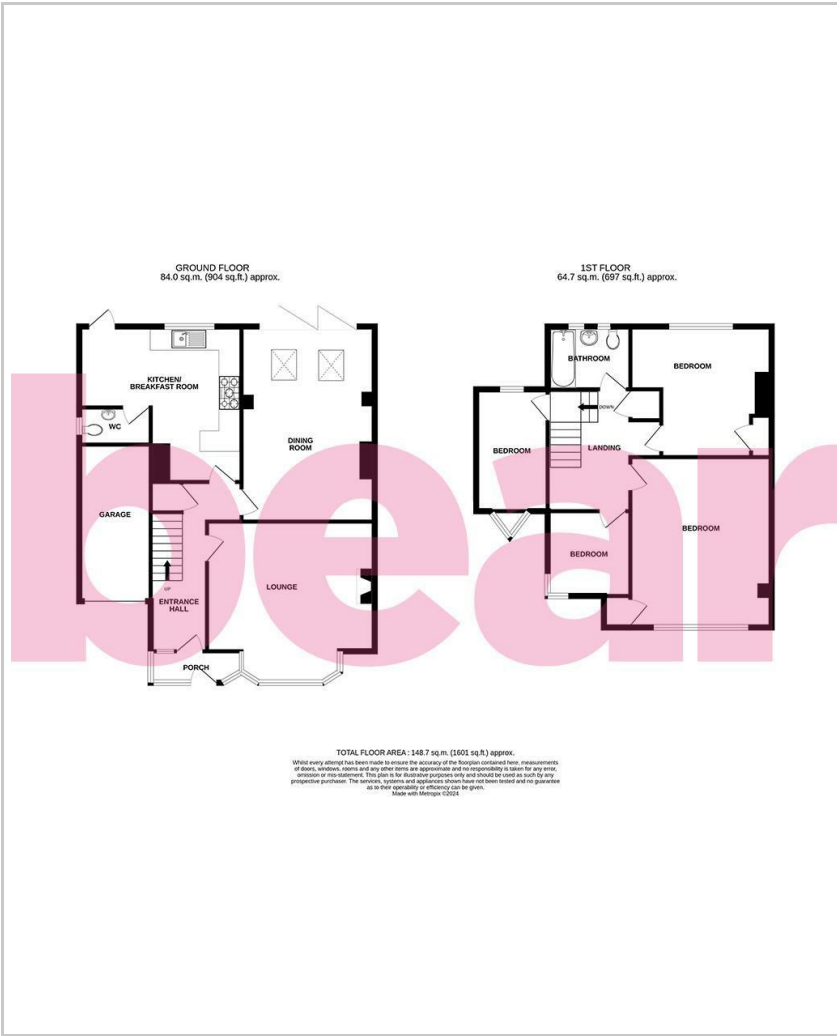
15'2 x 6'11

Garden

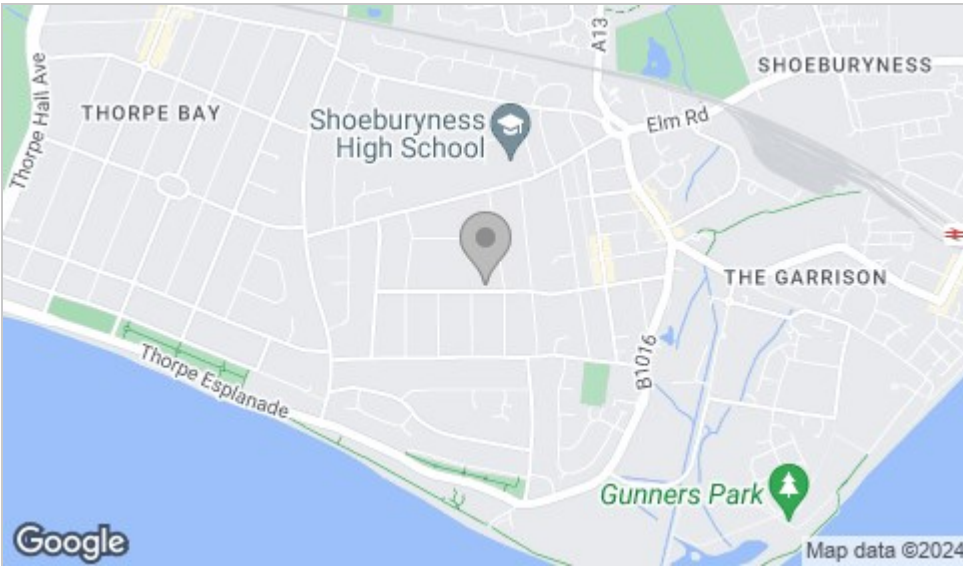
262'0



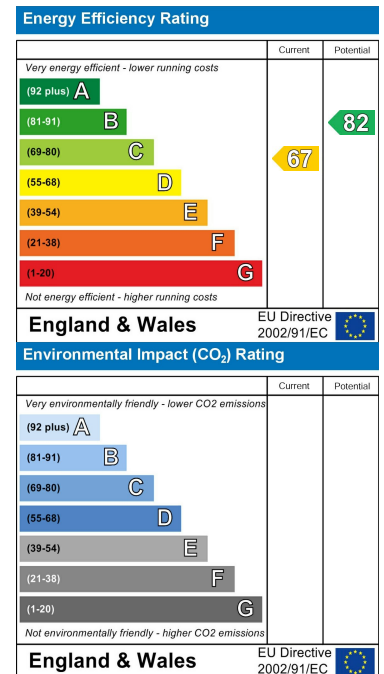
Floor Plan



Area Map



Energy Efficiency Graph



Viewing

Please contact our Southend-on-Sea Office on 01702 811211 if you wish to arrange a viewing appointment for this property or require further information.

These particulars, whilst believed to be accurate are set out as a general outline only for guidance and do not constitute any part of an offer or contract. Intending purchasers should not rely on them as statements of representation of fact, but must satisfy themselves by inspection or otherwise as to their accuracy. No person in this firm's employment has the authority to make or give any representation or warranty in respect of the property.

204 Woodgrange Drive, Southend-on-Sea, Essex, SS1 2SJ

Office: 01702 811211 info@bearestateagents.co.uk <https://www.bearestateagents.co.uk>