



Holland Road
Westcliff-on-Sea

£240,000



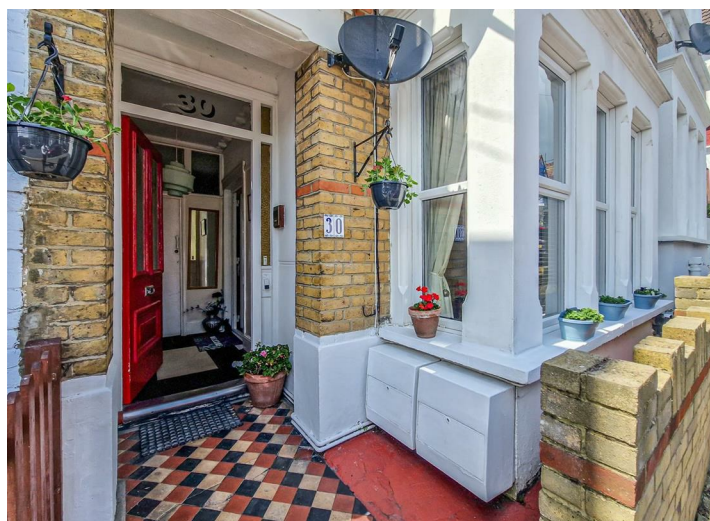
**** NO ONWARD CHAIN - A STONES THROW FROM THE SEA ****

A beautifully presented one bedroom ground floor flat in a fantastic location close to the sea and convenient Westcliff Train Station.

Featuring a long lease and a private section of the rear garden. This property is ideal for first time buyers or as a buy-to-let investment.

- Well Presented Throughout Close to the Sea
- Three Piece Bathroom
- Ground Floor Flat with No Onward Chain
- Private Section of the Rear Garden
- Spacious Bay Fronted Lounge
- Double Glazing
- Open Plan Kitchen/Diner
- Gas Central Heating
- One Double Bedroom
- Long Lease

Holland Road



Inside, this ground floor flat has been beautifully presented throughout and comprises a lounge with a feature bay window to the front, offering glimpses of the sea at the end of the road, a double bedroom with a feature fireplace, a spacious and well-fitted kitchen/diner, a bathroom and a separate WC at the rear. The kitchen provides direct access to a charming courtyard-style garden, which faces west for plenty of sunshine and is paved for easy maintenance. Additional benefits include gas central heating, double glazing and a long lease.

Located just a few hundred yards from the seafront, "The Arches" eateries and the Cliffs Pavilion. The flat is also a short walk to the numerous amenities on Hamlet Court Road and Westcliff mainline train station, which offers regular train services to London Fenchurch Street.

One Bedroom Ground Floor Flat

Entrance Hall

13'0 x 2'5

Lounge

14'1 x 12'4

Kitchen/Diner

12'1 x 11'6

Bedroom

11'5 x 11'0

Bathroom

8'0 x 3'8

WC

3'8 x 2'7

Garden

Agents Notes

Lease: 159

Ground Rent: £30 pa

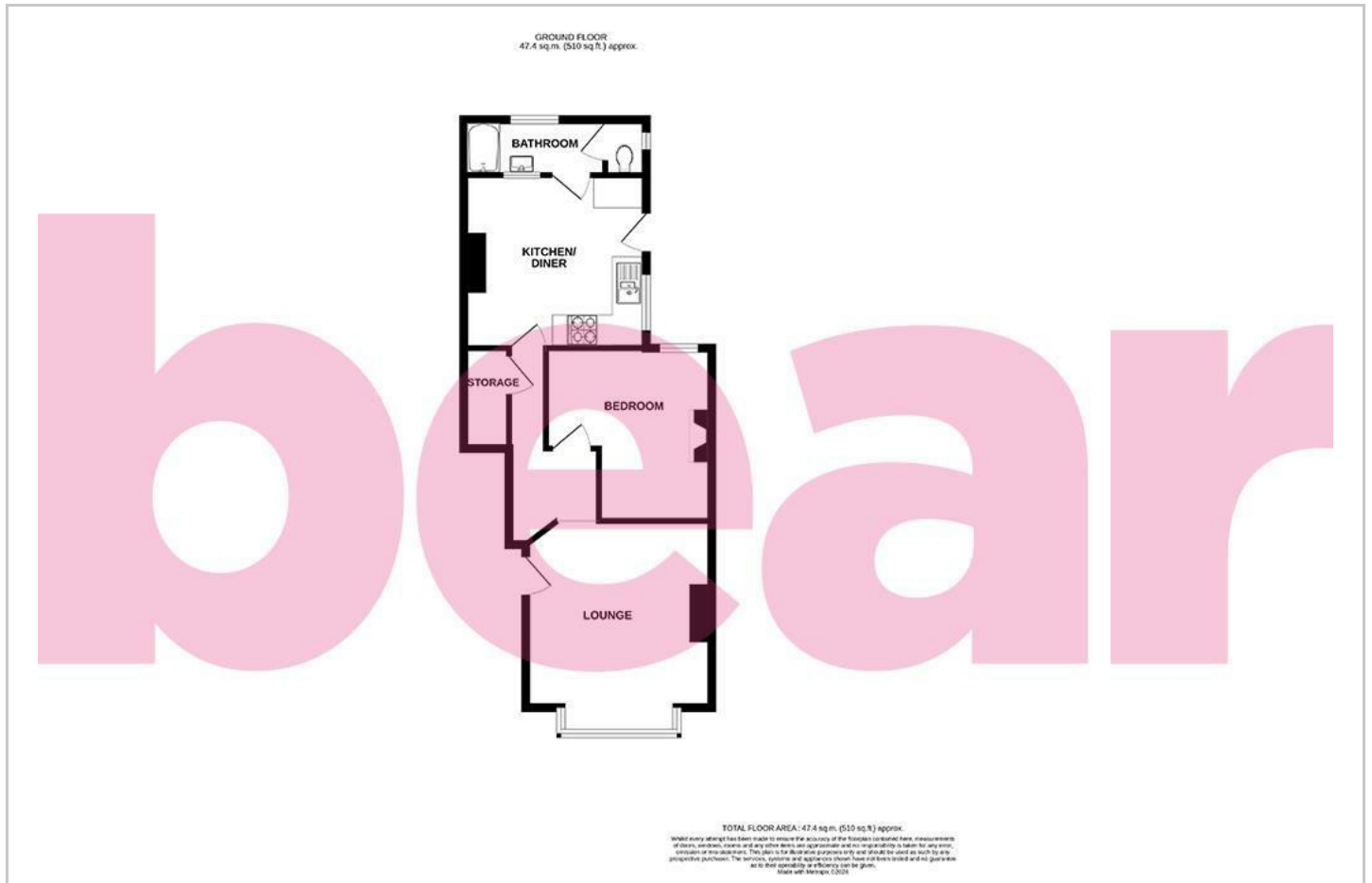
Service Charge: £0 - self-repairing

Building Insurance: £250 pa

Westcliff-on-Sea



Floor Plan



Area Map



Viewing

Please contact our Southend-on-Sea Office on 01702 811211 if you wish to arrange a viewing appointment for this property or require further information.

These particulars, whilst believed to be accurate are set out as a general outline only for guidance and do not constitute any part of an offer or contract. Intending purchasers should not rely on them as statements of representation of fact, but must satisfy themselves by inspection or otherwise as to their accuracy. No person in this firm's employment has the authority to make or give any representation or warranty in respect of the property.

204 Woodgrange Drive, Southend-on-Sea, Essex, SS1 2SJ

Office: 01702 811211 info@bearestateagents.co.uk <https://www.bearestateagents.co.uk>

Energy Efficiency Graph

