

bear

Estate Agents



Rylands Road
Southend-on-Sea

£340,000 Price Guide



**** NO ONWARD CHAIN ****

Well presented three bedroom semi-detached family home offering two reception rooms and a large, beautifully presented rear garden. Proudly appointed within easy reach of local schools, as well as amenities and travel links. Guide Price £340,000-£375,000

- No Onward Chain
- Semi-Detached Family Home
- Two Reception Rooms
- Fitted Kitchen
- Three Bedrooms
- Shower Room
- Beautifully Presented, Extensive Garden
- Double Glazing
- Gas Central Heating
- Close to Schools, Amenities and Travel Networks

Rylands Road



Bear Estate Agents are pleased to bring to the market with no onward chain, this well-loved three bedroom semi-detached family home. The property offers spacious living accommodation to offer a large lounge, a dining room and a fitted kitchen on the ground floor. There are two good-sized double bedrooms, one single bedroom and a three piece shower room found on the first floor. Externally, the rear boasts an extensive, laid to lawn garden that has a paved seating area and two sheds to remain.

Rylands Road is situated in a popular residential area close to well-regarded schools and excellent amenities. There are bus connections within walking distance, along with access to major rail links to London.

Three Bedroom Semi-Detached House

Porch

Entrance Hall

Lounge

15'9 x 11'4

Dining Room

11'8 x 10'5

Kitchen

8'8 x 6'5

Landing

Bedroom One

12'6 x 11'0

Bedroom Two

11'9 x 11'0

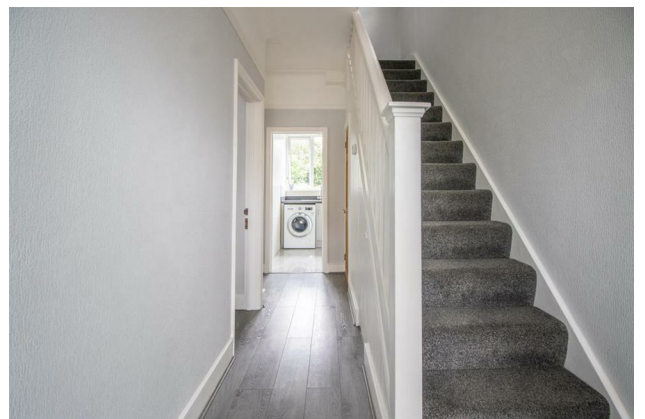
Bedroom Three

7'9 x 6'2

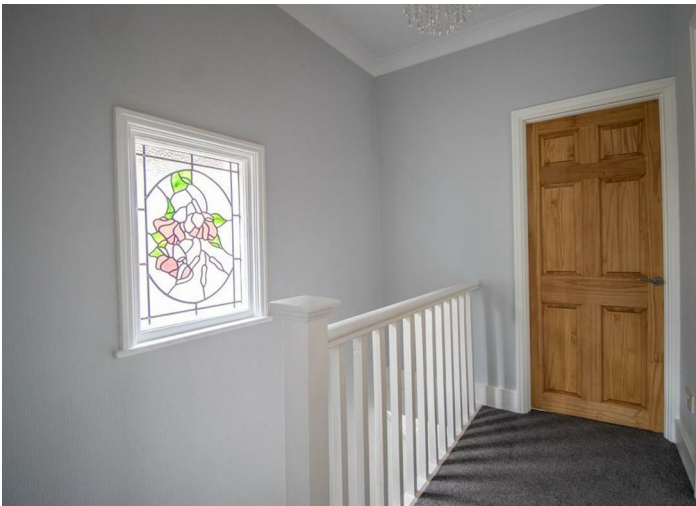
Three Piece Shower Room

7'7 x 6'0

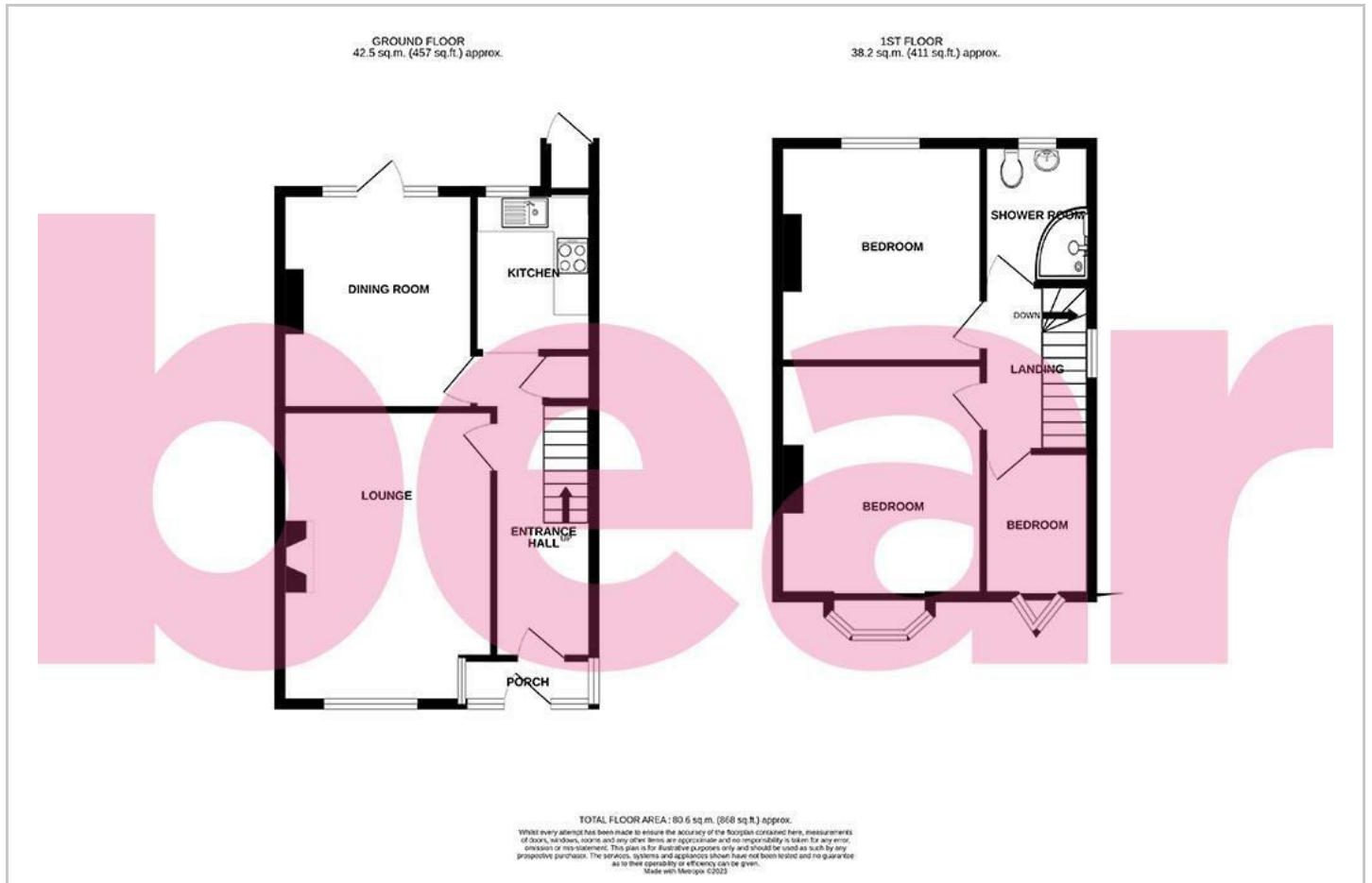
Garden



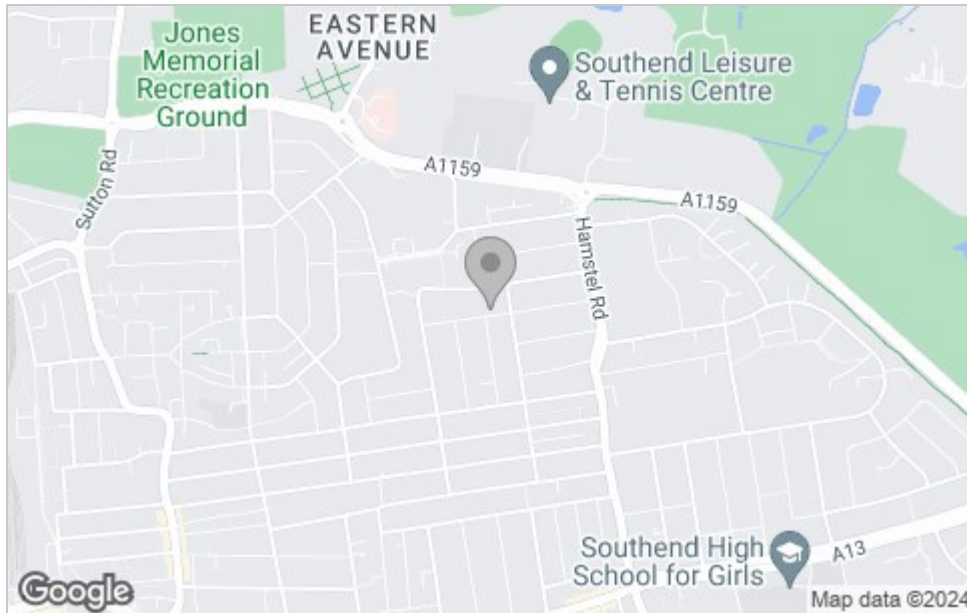
Southend-on-Sea



Floor Plan



Area Map



Viewing

Please contact our Southend-on-Sea Office on 01702 811211 if you wish to arrange a viewing appointment for this property or require further information.

These particulars, whilst believed to be accurate are set out as a general outline only for guidance and do not constitute any part of an offer or contract. Intending purchasers should not rely on them as statements of representation of fact, but must satisfy themselves by inspection or otherwise as to their accuracy. No person in this firm's employment has the authority to make or give any representation or warranty in respect of the property.

204 Woodgrange Drive, Southend-on-Sea, Essex, SS1 2SJ

Office: 01702 811211 info@bearestateagents.co.uk <https://www.bearestateagents.co.uk>

Energy Efficiency Graph

