

bear

Estate Agents



* £390,000-410,000 * Bear Estate Agents are delighted to offer for sale this extremely deceptive and spacious four bedroom, chalet style bungalow with well planned accommodation over two floors. The property enjoys modern living with a stunning rear sitting extension with feature glass lantern roof, luxury four-piece bathroom and separate shower room WC, along with a private rear garden and parking for three large vehicles to the front.

- Semi-Detached Chalet
- Two Large Reception Rooms
- Modern Four Piece Bathroom and a Shower Room
- Good-Sized Kitchen
- Two Double Bedrooms on the Ground Floor
- Two Double Bedrooms on the First Floor with Ample Eaves Storage
- Off-Street Parking to the Front
- Well-Landscaped Garden
- Double Glazing
- Gas Central Heating

Harewood Avenue

Rochford

£390,000

Price Guide



Harewood Avenue



The accommodation comprises entrance porch, entrance hallway, two reception rooms including a stunning 'L' shaped living room with a feature glass lantern roof, fitted kitchen with convenient utility cupboard, two double bedrooms, a stunning four piece bathroom suite and separate shower room. To the first floor there are two further large double bedrooms with ample eaves storage. Further benefits include double glazed windows, gas central heating, privately lawned garden and independent driveway to the front with parking comfortably for three large vehicles.

Harwood Avenue is an ultra popular residential location providing easy access to good local schools, local shops and is within walking distance of the historic Rochford Town Centre, along with its parade of shops and Mainline Railway Station which serves London's Liverpool Street line.

Frontage

Independent driveway with parking for three large vehicles and double glazed entrance door to:

Porch

Further hardwood double glazed door to:

Entrance Hall

Quality laminate effect floors throughout, two storage cupboards with overhead storage space and doors to:

Kitchen

13'7 x 11'2
Tiling to floors and walls, double glazed window to the side aspect, smooth ceilings, range of base and eye level storage units complemented with roll edge worktops, inset one and a quarter bowl sink with a mixer tap, space for a range oven with an extractor fan above, space for a fridge/freezer, storage cupboard with double doors and space for further utilities.

Sitting Room

17'3 x 13'7
Quality wood effect floors throughout, smooth ceilings with multiple inset downlighters, feature lantern glass roof, double glazed windows and French doors to the rear aspect leading onto and overlooking the garden and feature french doors to:

Shower Room

9'3 x 3'8
Quality wood effect floors throughout, smooth ceilings with inset downlighters, obscure double glazed window to the side aspect, sink unit with a mixer tap and storage under, WC, large shower area with a waterfall style shower and a further retractable shower head and a chrome heated towel rail.

Dining Room

17'10 x 11'1
Quality wood effect floors throughout, stairs to the first floor, French doors into the sitting room and a double radiator.

Bedroom One

14'5 x 11'1
Laminate effect floors throughout, double glazed window to the front aspect and ample space for wardrobes and chest of drawer units.

Bedroom Two

12'4 x 10'9
Wood effect laminate floors throughout, double glazed bay window to the front aspect and space for wardrobes.

Bathroom

9'5 x 7'3
Quality wood effect floors throughout, smooth ceilings with inset downlighters, obscure double glazed window to the side aspect, extractor fan, large walk-in shower with a waterfall style shower head and a further retractable shower head, sink unit with a mixer tap and drawers beneath, WC, panelled bath with a mixer tap and a chrome heated towel rail.

Landing

Wood effect floors throughout, double glazed skylight window, loft access and doors to:

Bedroom Three

17'2 x 9'8
Smooth ceilings, double glazed skylight to the front aspect, large eaves storage and a radiator.

Bedroom Four

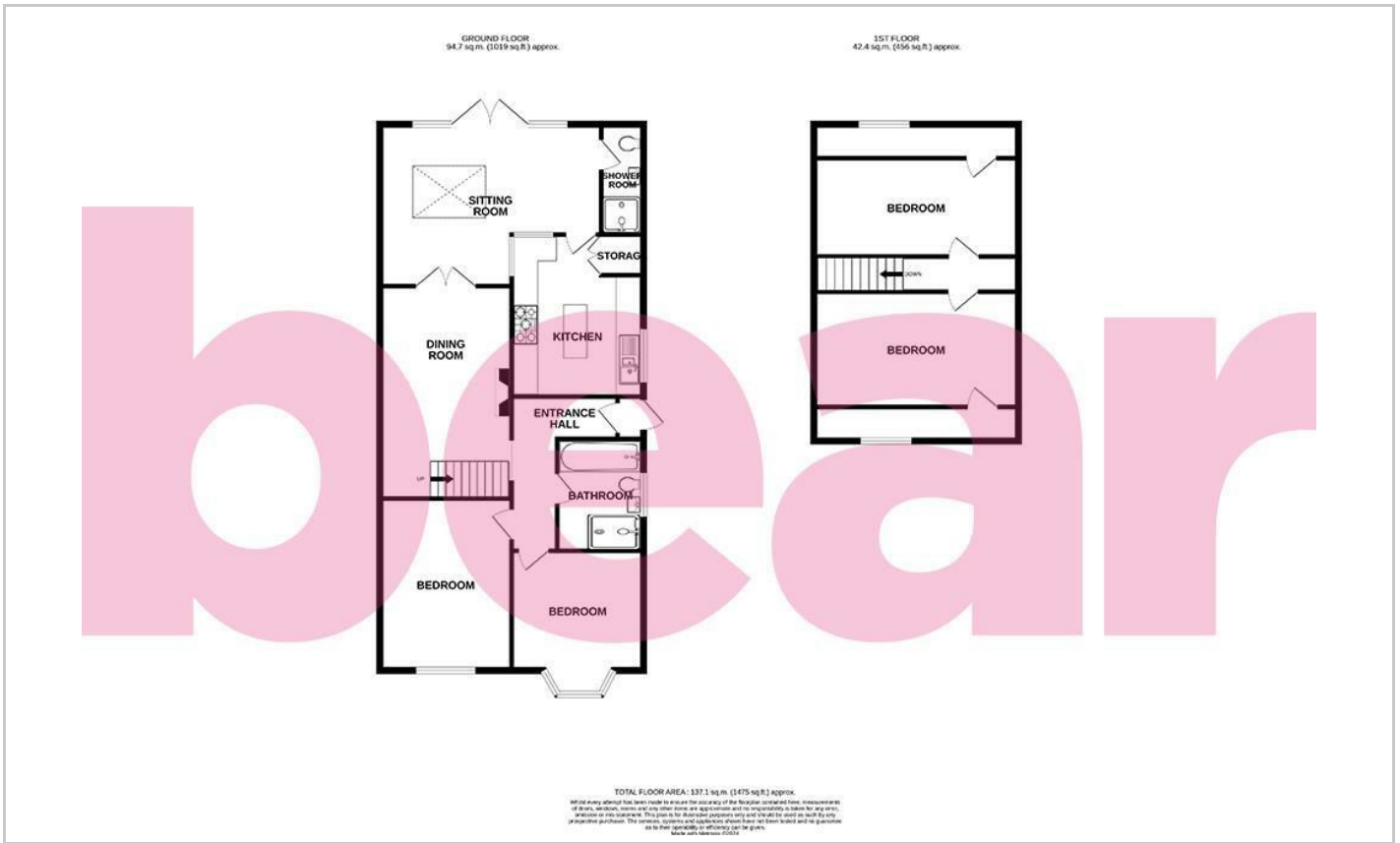
17'2 x 8'3
Quality wood effect floors throughout, smooth ceilings, double glazed skylight to the rear aspect, large eaves storage and a radiator.

Garden

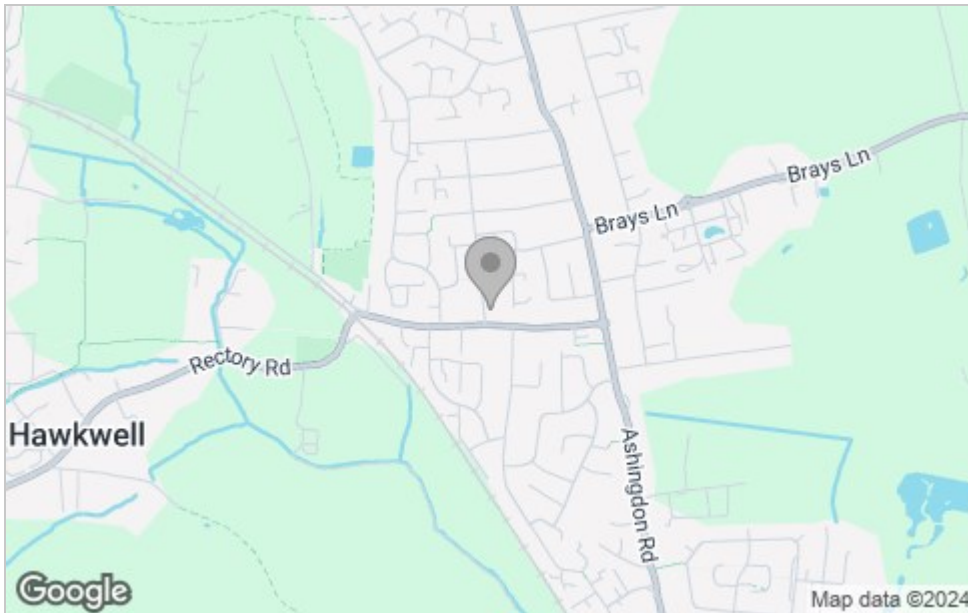
Commences with a gravel stone patio, side access, access to a large cladded garden room, remainder is laid to lawn with fencing to all boundaries and mature shrubs and trees.



Floor Plan



Area Map



Viewing

Please contact our Southend-on-Sea Office on 01702 811211 if you wish to arrange a viewing appointment for this property or require further information.

These particulars, whilst believed to be accurate are set out as a general outline only for guidance and do not constitute any part of an offer or contract. Intending purchasers should not rely on them as statements of representation of fact, but must satisfy themselves by inspection or otherwise as to their accuracy. No person in this firm's employment has the authority to make or give any representation or warranty in respect of the property.

204 Woodgrange Drive, Southend-on-Sea, Essex, SS1 2SJ

Office: 01702 811211 info@bearestateagents.co.uk <https://www.bearestateagents.co.uk>

Energy Efficiency Graph

