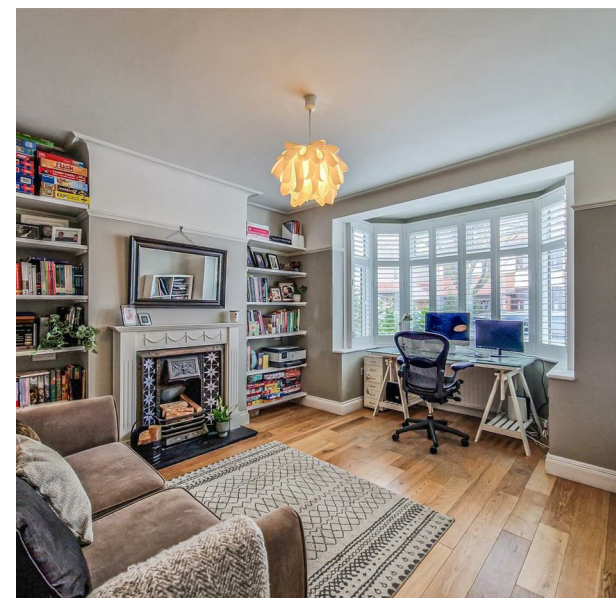


20 Tudor Gardens, Shoeburyness, Essex, SS3 9JG

Price Guide £625,000

bear
Estate Agents



20 Tudor Gardens, Shoeburyness, Essex, SS3 9JG

Price Guide £625,000

Council Tax Band: D

*** Guide Price £625,000-£650,000 *** Nestled within the sought-after Thorpedene Estate development, Bear Estate Agents proudly present this meticulously enhanced and expanded four/five bedroom residence. Situated in the prestigious Shoebury High School catchment area, this property offers an enviable lifestyle. Immersed in generous open spaces, the residence boasts a captivating kitchen/breakfast room, complete with bi-folding doors that seamlessly merge with the picturesque 80ft rear garden.

Upon entry, a grand hallway greets you, offering ample storage options. The property features two expansive reception rooms and a remarkable horseshoe-shaped kitchen/breakfast room illuminated by a stunning glass lantern roof. Adjacent, a utility room and guest WC provide convenience.

Ascending to the first floor, three double bedrooms await, accompanied by an additional bedroom/walk-in wardrobe and a lavish shower room boasting a magnificent walk-in shower with a waterfall-style shower head.

The crowning jewel awaits on the top floor - a majestic principal bedroom complete with a luxurious ensuite shower room. Additional highlights include double glazing, gas central heating, and a sprawling rear garden with access to a superb 26'3 x 15'3 log cabin/gym via bi-folding doors, perfect for entertaining or as a home office or games room.

An independent driveway caters to multiple vehicles, enhancing the property's appeal.

Tudor Gardens enjoys a prestigious reputation, situated within the Shoebury High School catchment area and offering easy access to award-winning blue flag beaches and local amenities. Thorpe Bay Train Station, providing access to London Fenchurch Street Station, is conveniently located 1.4 miles away.

Frontage

Independent block paved driveway providing parking for multiple vehicles, and a grand feature composite multi lock entrance door to:

Grand Reception Hall

19'4 x 16'6

The Grand Reception Hall welcomes with smooth high ceilings and the warmth of solid oak wood flooring underfoot. Natural light floods the space through a large double glazed window at the front, adorned with bespoke shutter blinds for privacy and style. A wall-mounted vertical radiator adds a touch of contemporary flair while ensuring comfort. Ascend the stairs gracefully leading to the first floor or utilise the convenient under stair storage cupboard with dual opening doors. With seamless access to various areas of the house, this hall sets the tone for a grand entrance experience.

Sitting Room

15'2 x 12'8

The Sitting Room offers a refined retreat within the home. Smooth high ceilings add to the sense of spaciousness, complemented by a large double glazed feature bay window that floods the room with natural light. Bespoke fitted blinds adorn the window, offering both privacy and style.

Solid oak flooring exudes timeless elegance while providing a sturdy foundation for the room's design. A stunning tiled fireplace takes center stage, complete with a slate hearth and decorative surround, adding warmth and charm to the space. Built-in book shelving offers both functionality and aesthetic appeal, providing ample storage for books and décor.

For added convenience, telephone points are strategically placed within the room, ensuring connectivity without compromising on style. Whether for relaxation or entertaining guests, this Sitting Room provides a welcoming atmosphere for all occasions.

Extended Living Room

21'0 x 11'5

Coving to smooth high ceilings, solid oak wood flooring, feature bi-folding doors to the rear aspect which lead onto and overlook the garden, feature wall-mounted vertical radiator, stunning slate ridge tile fireplace with inset log burner and open access to:

Kitchen/Breakfast Room

16'4>15'6 x 17'10

The Kitchen/Breakfast Room epitomises both style and functionality. Smooth high ceilings create an airy ambiance, enhanced by a stunning lantern glass roof that bathes the room in natural light. Double glazed windows to the rear aspect offer serene views of the garden, while a double glazed door provides seamless access to outdoor living.

Solid oak wood flooring adds warmth and character to the space, creating a welcoming atmosphere for culinary endeavors and casual dining alike. The kitchen features a traditional and extensive range of shaker style base and wall level storage units, exquisitely complemented by solid oak worktops.

Equipped with modern conveniences, the kitchen boasts an inset double oven, integrated dishwasher, and a four-ring electric hob with an extractor fan above, catering to culinary enthusiasts with ease. A wall-mounted feature vertical radiator adds a contemporary touch while ensuring optimal comfort.

Quality tiling adorns the walls, offering both durability and visual appeal. An under stair storage cupboard with a sliding door provides additional storage space, optimizing organisation within the room. The integrated fridge seamlessly blends into the cabinetry, maintaining a streamlined aesthetic.

With its harmonious blend of style and practicality, this Kitchen/Breakfast Room sets the stage for delightful culinary experiences and cherished moments shared with loved ones.

Utility Room

10'0 x 5'6

Smooth ceilings, inset downlighters, tiling to walls and floors, space for the washing machine, tumble dryer and fridge/freezer, base mounted unit with solid oak worktop, inset sink and door to:

Luxury Guest WC

6'7 x 3'8

Smooth ceilings, multiple inset downlighters, stunning tiling to floors, contemporary white suite comprises a WC, sink unit with mixer tap, storage cupboards under and feature splashback tiling.

First Floor Landing

11'4 x 9'9

Smooth ceilings, stairs to the second floor, quality solid oak wood doors to:

Bedroom Two

15'0 x 10'4

Smooth ceilings, large double glazed feature bay window to the front aspect with bespoke fitted blinds, quality wood effect flooring, built-in wardrobes with two sets of double doors and vast amounts of eaves storage over, further space for chest of drawer units and a radiator.

Dual Aspect Bedroom Three

14'7 x 9'7

Coving to smooth ceilings, double glazed windows to both front and rear aspects, bespoke shutters to the front, solid oak wood flooring, space for wardrobes and chest of drawer units.

Bedroom Four

12'3 x 11'5

Coving to smooth ceilings, double glazed window to the rear aspect overlooking the garden, solid oak wood flooring and a radiator.

Walk-in Wardrobe/Bedroom Five

7'5 x 6'2

Feature double glazed bay window to the front aspect, built-in cupboard and space for further wardrobes and chest of drawer units. This could easily be used as an office.

Luxury Shower Room

10'4 x 6'9

Coving to smooth ceilings, multiple inset downlighters, obscure double glazed window to the rear aspect, quality tiling to floor and walls, WC, dual sink units with mixer taps and two large storage cupboards under, chrome heated towel rail, extractor fan and a large stunning walk-in slate shower with waterfall shower head and further retractable shower with mixer taps.

Dual Aspect Grand Principle Suite

17'2 x 12'5

Smooth ceilings, multiple inset downlighters, double glazed skylight windows to the front aspect, double glazed window to the rear aspect overlooking the garden, radiator, large eaves storage cupboard and a quality oak door to:





Contemporary Ensuite

8'2 x 8'2

Smooth ceilings, multiple inset downlighters, extractor fan, obscure double glazed window to the rear aspect, quality tiling to floors and walls, convenient storage cupboard, feature chrome heated towel rail, stunning black glass sink with a mixer tap and two large drawers under, WC and a large walk-in tiled shower enclosure with a waterfall style shower and a retractable shower head.

Garden

80'0

Commences with a feature composite style decked patio area with external power points, external water, external lighting, feature pergola, remainder is generously laid to artificial lawn, raised flower beds, shrubs, mature trees, fencing to all boundaries and access to:

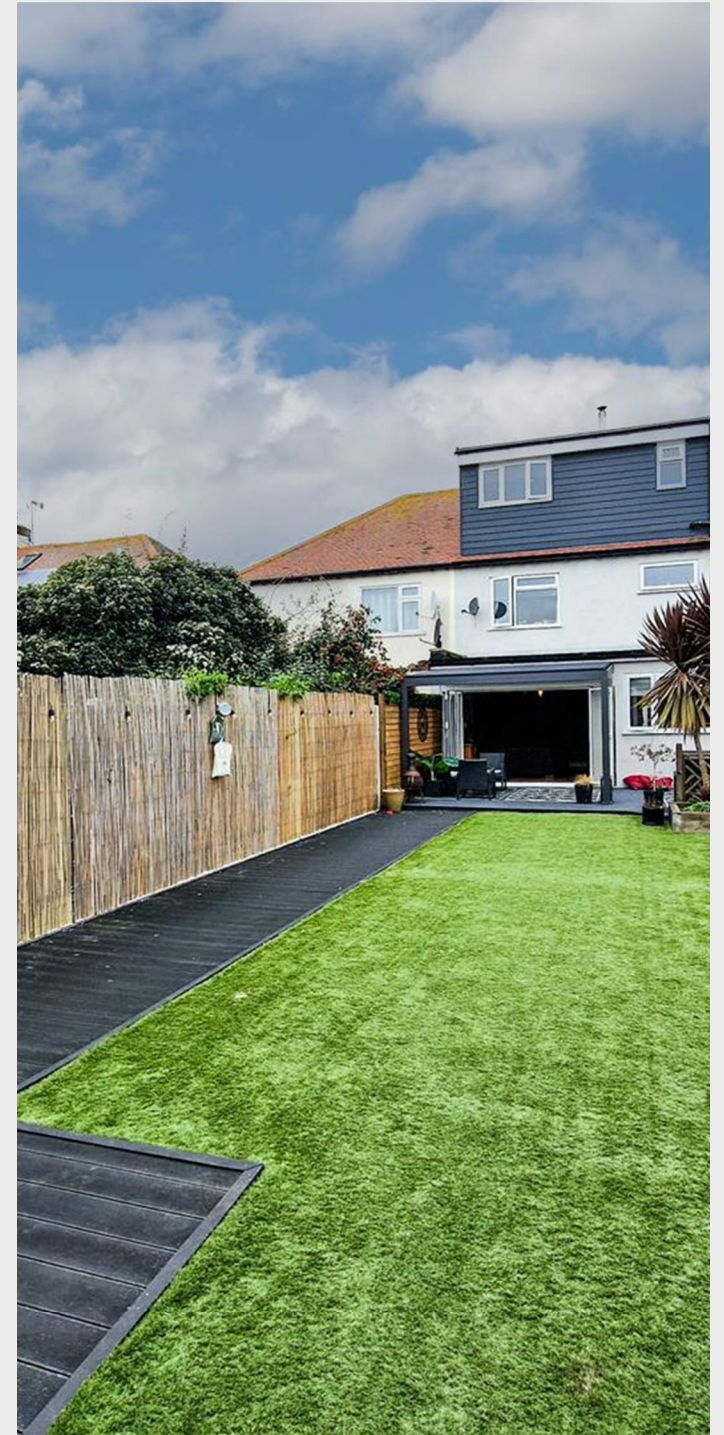
Log Cabin/Summerhouse/Gym

26'3 x 15'3

Accessed via full width, bi-folding, aluminium doors, further double glazed doors to the front aspect, multiple power points and large storage.

Council Tax

Band D



bear

Estate Agents

204 Woodgrange Drive
 Southend-on-Sea
 Essex
 SS1 2SJ
 01702 811211

info@bearestateagents.co.uk
<https://www.bearestateagents.co.uk>

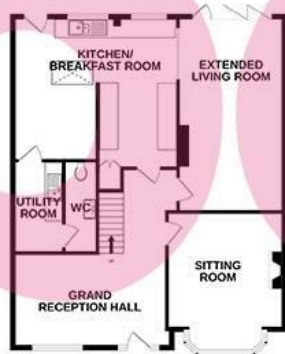
GROUND FLOOR
 132.3 sq.m. (1424 sq.ft.) approx.



1ST FLOOR
 99.1 sq.m. (1065 sq.ft.) approx.



2ND FLOOR
 29.0 sq.m. (310 sq.ft.) approx.



TOTAL FLOOR AREA : 217.4 sq.m. (2340 sq.ft.) approx.

Whilst every attempt has been made to ensure the accuracy of the floorplan contained here, measurements of doors, windows, rooms and any other items are approximate and no responsibility is taken for any error, omission or mis-statement. This plan is for illustrative purposes only and should be used as such by any prospective purchaser. The services, fixtures and appliances shown have not been tested and no guarantee as to their operability or efficiency can be given.
 Made with Metropix ©2024

Energy Efficiency Rating		Current	Potential
Very energy efficient - lower running costs			
(92 plus) A			
(81-91) B			
(69-80) C			
(55-68) D			
(39-54) E			
(21-38) F			
(1-20) G			
Not energy efficient - higher running costs			
England & Wales		EU Directive 2002/91/EC	