

# bear

*Estate Agents*



**Colchester Road**

Southend-on-Sea

**£275,000**

Price Guide





# Colchester Road



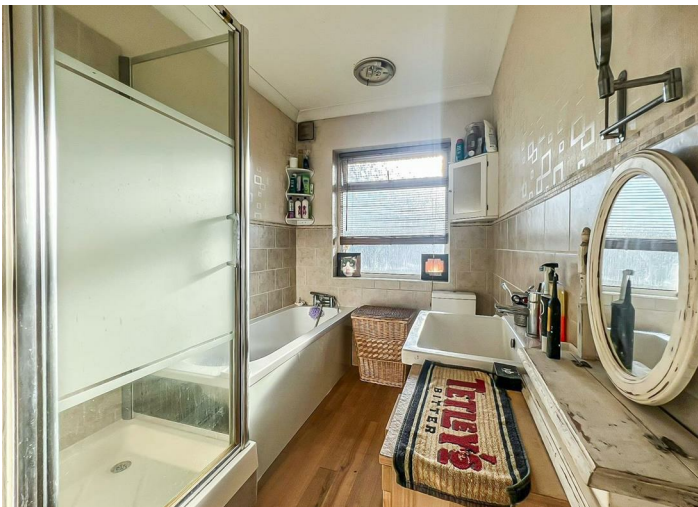
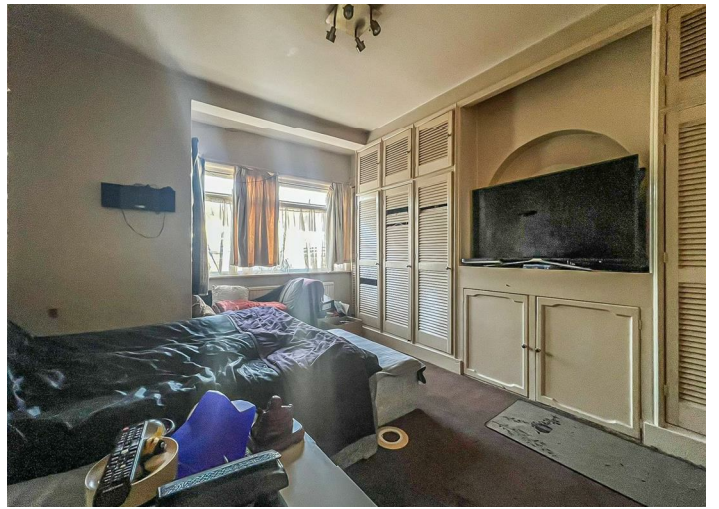
## Description

Two bedroom semi-detached house in a quiet residential road in Southend-on-Sea. Boasts a versatile conservatory/utility room, a kitchen/diner and a four piece bathroom, as well as a generous garden. Positioned close to the A127, schools, amenities and travel links. Guide Price £275,000-£300,000.

- Semi-Detached House
- Kitchen/Diner
- Two Bedrooms
- Generous Garden
- Gas Central Heating
- Bay Fronted Lounge
- Versatile Conservatory/Utility Room
- Four Piece Bathroom
- Double Glazing

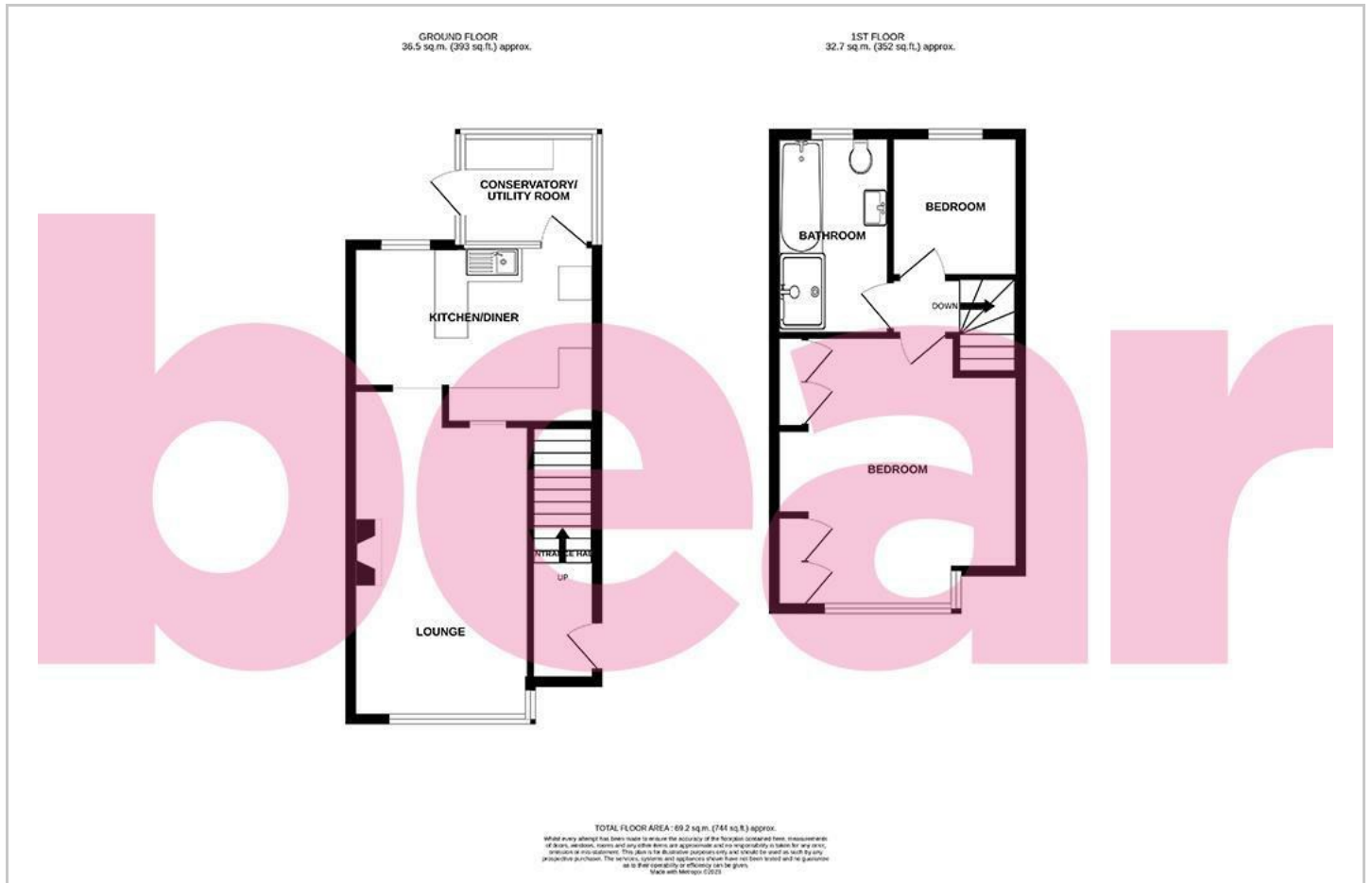




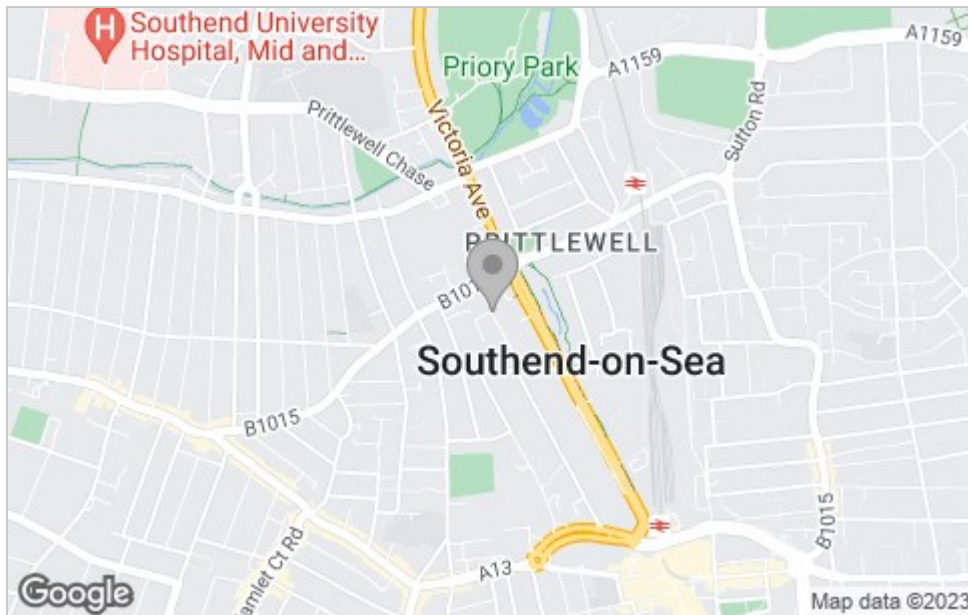




# Floor Plan



## Area Map



## Viewing

Please contact our Southend-on-Sea Office on 01702 811211 if you wish to arrange a viewing appointment for this property or require further information.

These particulars, whilst believed to be accurate are set out as a general outline only for guidance and do not constitute any part of an offer or contract. Intending purchasers should not rely on them as statements of representation of fact, but must satisfy themselves by inspection or otherwise as to their accuracy. No person in this firm's employment has the authority to make or give any representation or warranty in respect of the property.

Beech House, 1 Journeymans Way, Temple Farm Industrial Estate, Southend-on-Sea, Essex, SS2 5TF

Office: 01702 811211 [info@bearestateagents.co.uk](mailto:info@bearestateagents.co.uk) <https://www.bearestateagents.co.uk>

## Energy Efficiency Graph

