



# Oakwell

10 Foxcombe Lane, Horsington



# Oakwell

10 Foxcombe Lane  
Horsington  
Templecombe  
BA8 0DS

A distinguished contemporary residence, set within expansive grounds, offering exceptional living across three floors. Impeccably designed with thoughtful finishes, landscaped gardens and exclusive rural surroundings, perfectly combining elegance and practicality.



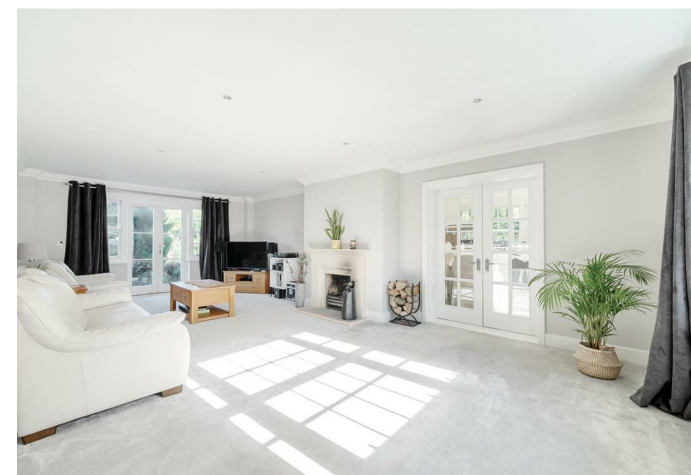
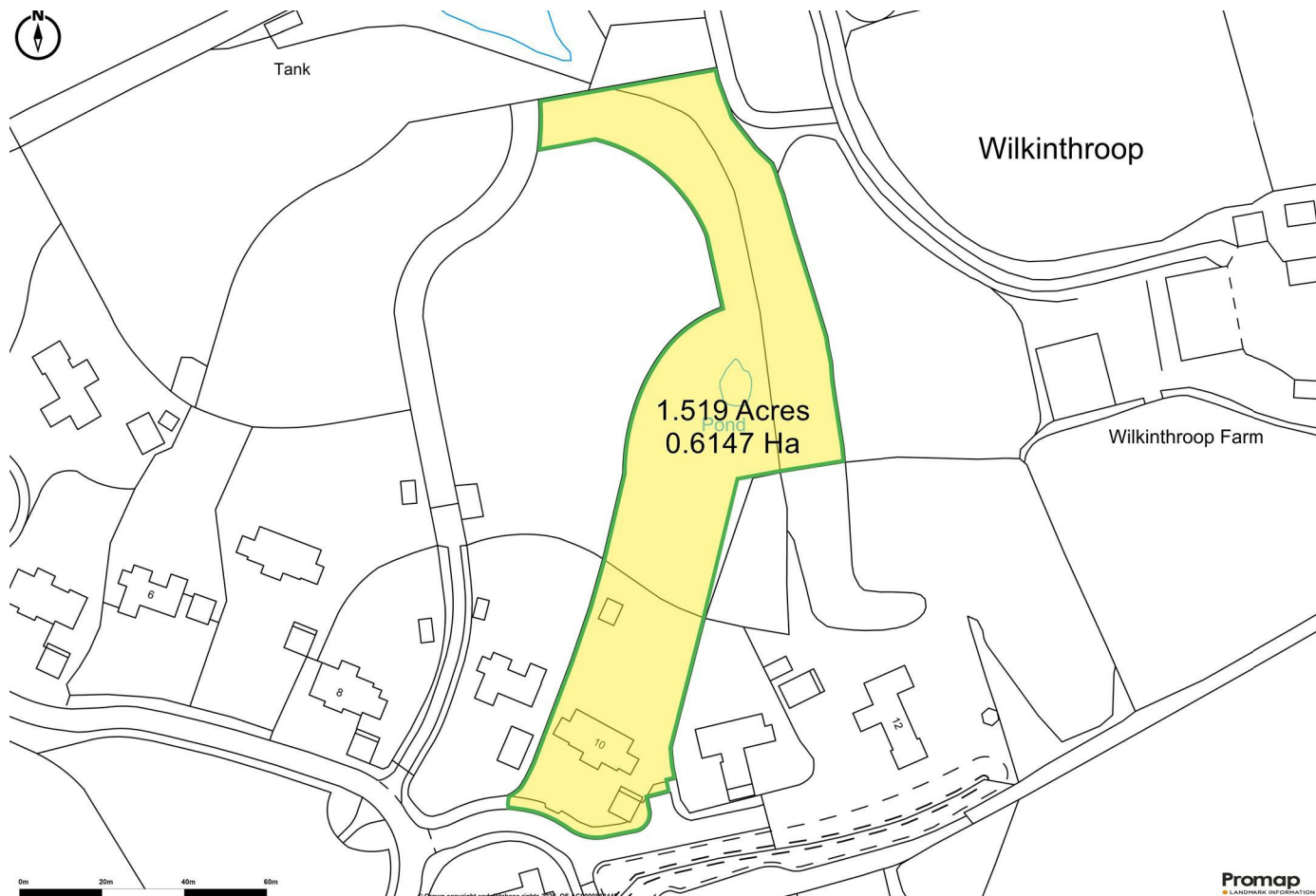
- Contemporary detached home built by Swan Hill, set within a private development
- Spanning 3,336 sq ft across three floors, offering spacious and light-filled accommodation
- Four reception rooms, including a formal dining room, living room and garden room
- Large kitchen with sleek units, high-spec appliances
  - Six double bedrooms, with two ensembles
  - Expansive gardens of 1.5 acres
    - Private road
    - No onward chain

Guide Price £1,100,000

Freehold

Sherborne Sales  
01935 814488

[sherborne@symondsandsampson.co.uk](mailto:sherborne@symondsandsampson.co.uk)



## THE DWELLING

Oakwell is a contemporary detached residence, constructed by Swan Hill, a developer renowned for crafting high-value homes with meticulous attention to specification, detail, and quality. Accessed via a sweeping private road, this exclusive development comprises just 15 properties, harmoniously nestled within the surrounding countryside. Positioned near the Dorset border, the home enjoys picturesque views across the tranquil Blackmore Vale, offering a peaceful retreat while remaining conveniently close to local amenities.

This impressive home features attractive stone elevations beneath a tiled roof, presenting a distinguished double-fronted façade with symmetrical wings flanking either side and a striking stone-pillared porch at its entrance. Spanning three floors, the property offers 3,336 sq ft of well-appointed accommodation, set within 1.5 acres of beautifully landscaped gardens. The grounds extend towards open countryside, which forms part of the wider development, ensuring a sense of privacy and uninterrupted rural views.







## ACCOMMODATION

The ground floor boasts four well-proportioned reception rooms, all exceptionally light-filled and spacious. A generous entrance hall provides access to each reception room, along with a cloakroom. Double doors lead from the entrance hall to both the formal dining room and the living room, each featuring French doors that open onto the expansive garden. The living room also connects seamlessly to the garden room, which similarly enjoys French doors leading to the rear.

The kitchen is designed to cater to all culinary needs, featuring sleek units and high-specification appliances. Openings provide access to both the dining room and snug, while a separate utility



room offers additional convenience.

The first floor is centred around an impressive galleried landing, providing access to four well proportioned double bedrooms and a well-appointed family bathroom. The master bedroom benefits from its own complete ensuite.

The second floor offers two further generously sized double bedrooms, one of which benefits from its own ensuite.

## GARDEN

Set within 1.5 acres of landscaped grounds, the garden is enclosed by well-established hedging and mature trees, offering both

privacy and a picturesque setting. Predominantly laid to lawn, the garden gently sweeps down, as far as the eyes can meet.

Adjacent to the property, a paved patio area provides seamless access to the front of the home, while a bespoke summer house with a decking area sits within the grounds. The summer house is fully equipped with light and power, making it a versatile retreat. Towards the rear, a small wooded area adds to the garden's charm, with further access leading to the development's private land.

To the front of the property, a gravelled driveway provides ample parking alongside a timber-clad double garage, seamlessly blending with the surrounding landscape.





## SITUATION

The property is located on the edge of the sought-after village of Horsington, which, meaning "the settlement of the horse keepers," boasts a primary school, a 15th-century church, a village hall, and the Half Moon public house. Horsington benefits from excellent road links, with the A303 just 4 miles away and Templecombe Railway Station providing direct access to London Waterloo in approximately 2.5 hours. The historic Abbey town of Sherborne lies to the west and offers a wide range of amenities, as well as renowned independent schools, including the Sherborne Schools, Millfield, Bruton, Port Regis, and Bryanston. There is also a state school in nearby Wincanton and the primary school in Horsington itself. The area is perfect for outdoor enthusiasts, offering excellent

walking, cycling, and riding opportunities, as well as National Hunt racing at Wincanton and Taunton, flat racing at Bath and Salisbury, and hunting with the Blackmore and Sparkford Vale. For golf lovers, courses can be found at Wincanton, Sherborne, Yeovil, and Wheathill.

## MATERIAL INFORMATION

Mains electric, water and drainage  
Oil central heating.

Broadband - Ultrafast broadband is available.  
Mobile phone network coverage is unlikely inside and likely outside on most major networks.

(Information from Ofcom <https://www.ofcom.org.uk>)  
Somerset Council  
Council Tax Band: G

The most recent service charge was £565.64 for a six-month period, covering the upkeep and maintenance of the communal areas and contributing to the sinking fund.

## DIRECTIONS

What3words - ///jiggle.obeyed.asked





## Foxcombe Lane, Horsington, Templecombe

Approximate Area = 3336 sq ft / 309.9 sq m

Limited Use Area(s) = 28 sq ft / 2.6 sq m

Garage = 352 sq ft / 32.7 sq m

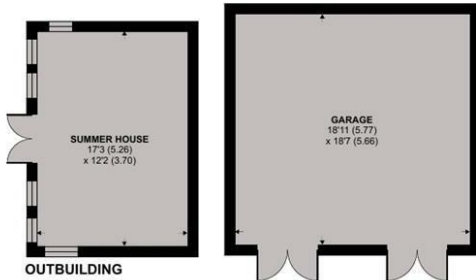
Outbuilding = 209 sq ft / 19.4 sq m

Total = 3925 sq ft / 364.6 sq m

For identification only - Not to scale

Energy Efficiency Rating		
Environment	Current	Potential
Estimated energy and carbon ratings		
A		
B		
C		
D		
E		
F		
G		
Estimated energy and carbon ratings		
A		
B		
C		
D		
E		
F		
G		
Not energy efficient - higher rating needed		
England & Wales		
EU Directive 2002/91/EC		

Denotes restricted head height



SECOND FLOOR



FIRST FLOOR



GROUND FLOOR

Floor plan produced in accordance with RICS Property Measurement 2nd Edition, Incorporating International Property Measurement Standards (IPMS2 Residential). © ncthemcom 2025. Produced for Symonds & Sampson. REF: 1229872



Sheb/JM/0325



naei | propertymark  
PROTECTED

www.  
the  
londonoffice.co.uk  
40 ST JAMES'S PLACE SW1

01935 814488

sherborne@symondssandsampson.co.uk  
Symonds & Sampson LLP  
4 Abbey Corner, Half Moon Street,  
Sherborne, Dorset DT9 3LN



Important Notice: Symonds & Sampson LLP and their Clients give notice that: 1. They have no authority to make or give any representations or warranties in relation to the property. These particulars do not form part of any offer or contract and must not be relied upon as statements or representations of fact. 2. Any areas, measurements or distances are approximate. The text, photographs and plans are for guidance only and are not necessarily comprehensive. It should not be assumed that the properties have all necessary planning, building regulation or other consents and Symonds and Sampson LLP have not tested any services, equipment of facilities. 3. We have not made any investigation into the existence or otherwise of any issues concerning pollution of the land, air or water contamination and the purchaser is responsible for making his/her own enquiries in this regard. 4. The property is sold subject to and with the benefit of all existing wayleaves, easements and rights of way whether public or private, specifically mentioned or not. The vendors shall not be required to define any such rights, privileges or advantages.

SALES | LETTINGS | AUCTIONS | FARMS & LAND | COMMERCIAL | NEW HOMES | PLANNING & DEVELOPMENT