



Symonds
& Sampson

The Garden House

Church Walk, Marston Magna

The Garden House

Church Walk
Marston Magna
BA22 8DQ

With versatile accommodation and modern-day living in mind, The Garden House is a four-bedroom detached property set within a generous walled plot. It features spacious open-plan living and enjoys a south-facing garden.



- Detached four bedroom property situated in a sought after location
- Well presented with light accommodation throughout
- Situated in a quiet position away from the main road
 - Ensuite to the master bedroom
 - Private driveway leading to double garage
 - South facing garden
 - Open plan kitchen diner

Guide Price £700,000

Freehold

Sherborne Sales
01935 814488
sherborne@symondsandsampson.co.uk



THE DWELLING

Constructed in 2006 with stone elevations beneath a tiled roof, The Garden House is set within a spacious walled plot, accessed via a charming tree-lined drive. The property features a generous and versatile open-plan layout on the ground floor, while the first floor accommodates four well-proportioned bedrooms, offering both space and flexibility.

ACCOMMODATION

Beyond its charming exterior, a spacious entrance hall welcomes you into the ground floor, leading to the inviting reception rooms. At the rear, the south facing open-plan kitchen diner is bathed in natural light from the adjoining summer room. The kitchen, designed to cater to all culinary needs, features solid oak units, granite worktops, and a breakfast bar. Adjacent to the kitchen, the utility room provides additional storage, a sink, and houses the oil-fired boiler along with the airing cupboard. The dining room, which connects to the summer room, also offers access to the sitting room, creating a seamless flow throughout the living spaces. Additionally, a spacious study and cloakroom can also be found on the ground floor, providing further flexibility and convenience.

The first floor offers four well-proportioned bedrooms, with the master bedroom benefiting from ample built-in storage and an ensuite featuring a walk-in double rainfall

shower and underfloor heating. A recently fitted family bathroom, thoughtfully designed for modern living, is also located on the first floor.

GARDEN

To the rear, the south-facing walled garden provides a private retreat, featuring a central lawn area bordered by mature flower beds. Adjacent to the property is a patio area, perfect for enjoying the sunny southerly aspect, while a second patio enjoys a shaded position. Raised vegetable beds are located at the rear, along with a shed and side access.

At the front, the gravelled, tree-lined driveway provides ample parking and leads to a double garage. The garage is equipped with electric up-and-over door, lighting, and power, with rafter storage for additional space. A rear pedestrian door adds convenience and easy access to the garden.

SITUATION

Marston Magna, located on the South Somerset/Dorset borders, offers local amenities such as a traditional pub, a parish church, and a village hall. For additional services, the nearby village of Queen Camel, just 1.5 miles to the north, provides further options. Sherborne, with its historic abbey, renowned schools, and a variety of shops, is within 5 miles.

Yeovil, also within 5 miles, offers a wider range of shopping, recreational, and educational facilities, including a college and district hospital. The area is well-connected by mainline railway stations in Sherborne, Yeovil, and Castle Cary.

DIRECTION

What3words - [///rebirth.outfitter.multiples](#)

MATERIAL INFORMATION

Mains electric, drainage and water

Oil-fired central heating

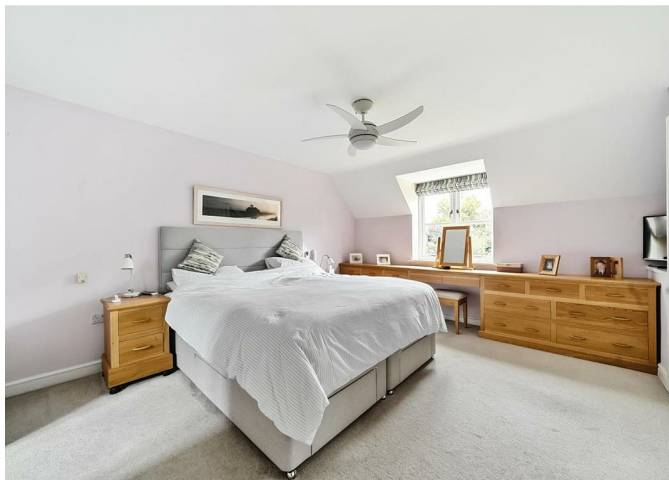
Somerset Council

Council tax band - F

Ultrafast broadband is available in the area

Mobile phone coverage is likely outside with limited coverage inside.

Source Ofcom - [ofcom.org.uk](#)





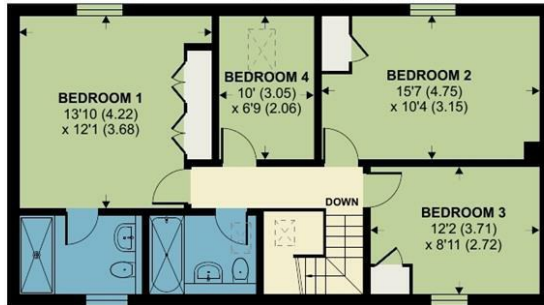
Church Walk, Marston Magna, Yeovil

Approximate Area = 1724 sq ft / 160.1 sq m

Garage = 336 sq ft / 31.2 sq m

Total = 2060 sq ft / 191.3 sq m

For identification only - Not to scale



FIRST FLOOR



GROUND FLOOR

Floor plan produced in accordance with RICS Property Measurement 2nd Edition, Incorporating International Property Measurement Standards (IPMS2 Residential). © nichecom 2024. Produced for Symonds & Sampson. REF: 1202634



Energy Efficiency Rating		
	Current	Potential
Very energy efficient - lower running costs		
(92 plus) A		
(81-91) B		
(69-80) C		
(55-68) D	60	71
(39-54) E		
(21-38) F		
(1-20) G		
Not energy efficient - higher running costs		
England & Wales		EU Directive 2002/91/EC



Sherb/JM/1024



01935 814488

sherborne@symondsandsampson.co.uk
Symonds & Sampson LLP
4 Abbey Corner, Half Moon Street,
Sherborne, Dorset DT9 3LN



Important Notice: Symonds & Sampson LLP and their Clients give notice that: 1. They have no authority to make or give any representations or warranties in relation to the property. These particulars do not form part of any offer or contract and must not be relied upon as statements or representations of fact. 2. Any areas, measurements or distances are approximate. The text, photographs and plans are for guidance only and are not necessarily comprehensive. It should not be assumed that the properties have all necessary planning, building regulation or other consents and Symonds and Sampson LLP have not tested any services, equipment or facilities. 3. We have not made any investigation into the existence or otherwise of any issues concerning pollution of the land, air or water contamination and the purchaser is responsible for making his/her own enquiries in this regard. 4. The property is sold subject to and with the benefit of all existing wayleaves, easements and rights of way whether public or private, specifically mentioned or not. The vendors shall not be required to define any such rights, privileges or advantages.

SALES | LETTINGS | AUCTIONS | FARMS & LAND | COMMERCIAL | NEW HOMES | PLANNING & DEVELOPMENT