



## Windsor House, 6 Windsor Way, Knutsford, WA16 6JB

Modern building in the heart of Knutsford town centre.

Tenure	To Let / For Sale
Available Size	300 to 3,686 sq ft / 27.87 to 342.44 sq m
EPC Rating	Upon enquiry

### Key Points

- > Fitted out to a high specification.
- > Quality Boardroom and Kitchen Area
- > Comfort cooling throughout
- > Separate Office / Meeting Room

## Summary

Available Size 300 to 3,686 sq ft

EPC Rating Upon enquiry

## Description

The 3,686 SQ.FT office building offers excellent and modern space located at the ground, first and second floors which are accessed via an impressive reception hall and feature stairwell, the building offers parking for up to 15 people.

The building is available as a whole or offers suites from 300sqft.

## Location

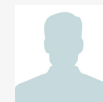
Windsor House is located in Knutsford which is a well known and affluent Cheshire town. The building is located on Windsor Way just off the main road A50 Manchester Road, near the Northwich Road roundabout and is within easy walking distance of the town's retail, leisure, and parking amenities.

## Accommodation

Name	sq ft	Rent
Building - Windsor	3,686	£6,187 /month
Ground - Suite 1	613	£1,533 /month
Ground - Suite 2	300	£750 /month



## Viewing & Further Information



Constantine Thanopoulos  
0161 220 1999 | 07718884764

[constantine.thanopoulos@hurstwoodholdings.com](mailto:constantine.thanopoulos@hurstwoodholdings.com)

