



HIGH QUALITY INDUSTRIAL



New Hall Hey Industrial Park, New Hall Hey Road,
Rossendale, BB4 6HR

New Hall Hey Business Park is a well-established industrial estate with on-site car parking and a shared service area.

Tenure	To Let
Available Size	660 to 2,169 sq ft / 61.32 to 201.51 sq m
Rent	£715 - £2,169 per month
Business Rates	Upon Enquiry
EPC Rating	D (88)

Key Points

- > Excellent location

Description

New Hall Hey Business Park is a well-established industrial estate with on-site car parking and shared service area. Each unit features electrically operated up an over door with separate personnel access. Units have clear span floor space, WC facilities and some are provided with office/kitchen facilities.

Location

Situated on New Hall Hey Road, New Hall Hey Business Park is ideally located for access to the motorway networks linking Rossendale, Manchester, Burnley and Blackburn. It is also close to the local amenities provided within Rawtenstall town centre.

Accommodation

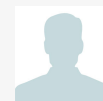
Description	sq ft	Rent	Service charge
Unit 23	775	£840 /month	£65 /month
Unit 27	660	£715 /month	£55 /month
Unit 15	2,169	£2,169 /month	£180 /month

Lease Terms

The accommodation is available to let by way of a full repairing and insuring lease for a term to be agreed.



Viewing & Further Information



Constantine Thanopoulos
0161 220 1999 | 07718884764

constantine.thanopoulos@hurstwoodholdings.com

