



Palmers Grove, Nazeing, Essex.

  
**Reynolds Salter**  
Estate Agents









An Outstanding FOUR BEDROOM SEMI DETACHED HOUSE ideally situated in a peaceful residential location in the heart of Nazeing village with FABULOUS VIEWS OVER OPEN COUNTRYSIDE. This delightful family home has been tastefully extended to provide bright, spacious and versatile accommodation presented in excellent decorative order throughout. Accommodation includes ; Reception Hall, 21' Lounge, Dining Room, Fitted Kitchen, Utility Area, Three First Floor Bedrooms, Children's Playroom/Bedroom 4, Family Shower Room and a Ground floor Cloakroom. The rear garden is beautifully well established and offers a high degree of privacy, being mainly laid to lawn surrounded by various trees, bushes, plants and flowerbeds along with a paved patio/bbq and seating area, an ornate fishpond, a timber summerhouse and fantastic views over open countryside. Nazeing is a popular village providing a number of shops, a highly regarded primary school, and a friendly local public house. Broxbourne Railway Station with its fast and frequent service into London Liverpool Street is approximately 2 miles.

- **Semi Detached Family Home**
- **Four Bedrooms**
- **Views Over Open Countryside**
- **Peaceful Residential Location**
- **Beautiful Mature Rear Garden**
- **Off Road Parking**

EPC - E

 Reynolds Salter  
Estate Agents

25a High Road, Broxbourne,  
Herts, EN10 7HX  
[www.reynoldssalter.co.uk](http://www.reynoldssalter.co.uk)

01992 449000



# Palmers Grove, Nazeing, Essex

Approximate Gross Internal Area = 119.8 sq m / 1289 sq ft

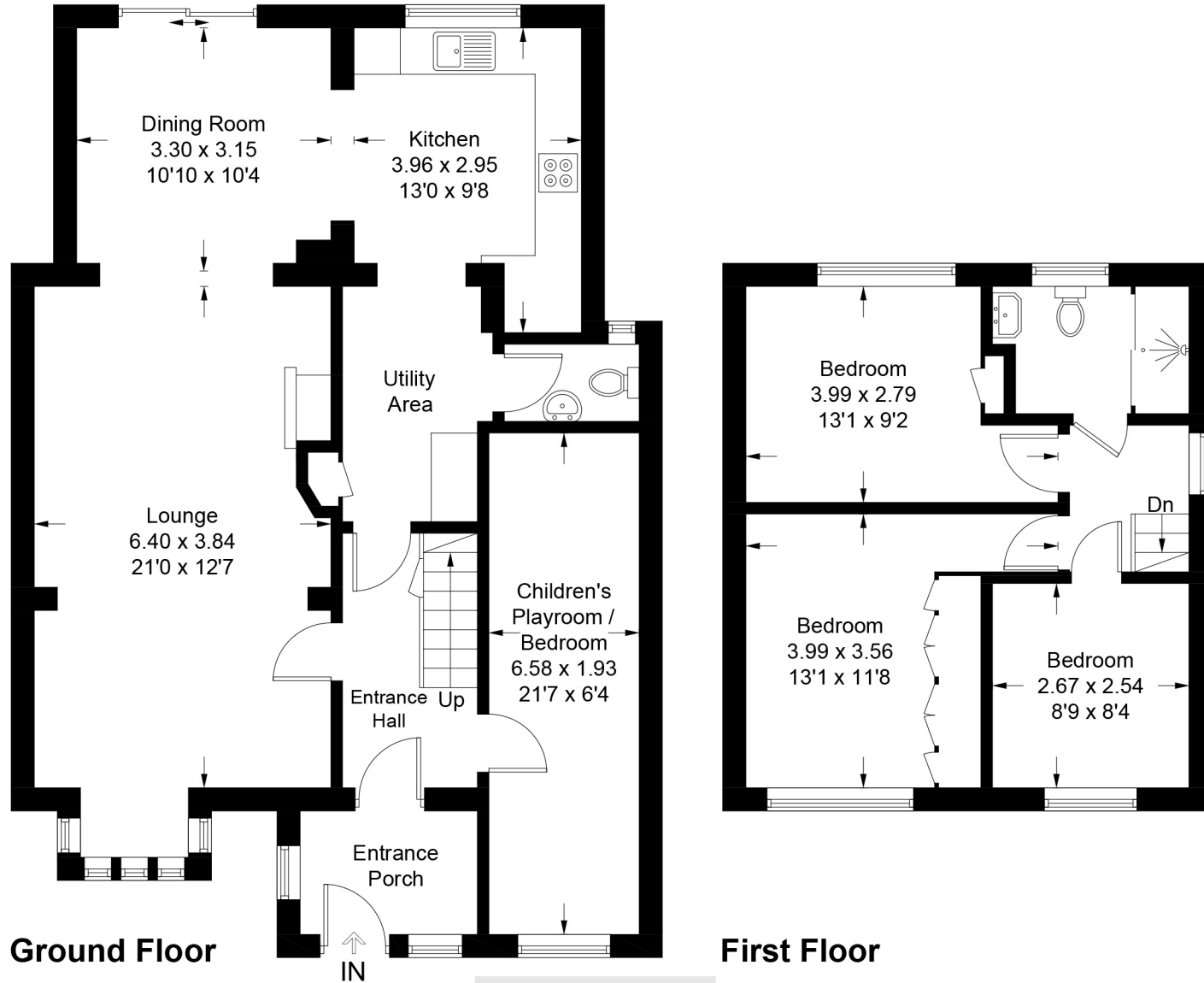


Illustration for identification purposes only, measurements are approximate, not to scale. FloorplansUsketch.com © 2024 (ID1122900)

#### Important notice

1. Particulars: These particulars are not an offer or contract, nor part of one. You should not rely on statements by Reynolds Salter in the particulars or by word of mouth or in writing ("information") as being factually accurate about the property, its condition or its value. Neither Reynolds Salter nor any joint agent has any authority to make any representations about the property, and accordingly any information given is entirely without responsibility on the part of the agents, seller(s) or lessor(s). 2. Photos etc: The photographs show only certain parts of the property as they appeared at the time they were taken. Areas, measurements and distances given are approximate only. Regulations etc: Any reference to alterations to, or use of, any part of the property does not mean that any necessary planning, building regulations or other consent has been obtained. A buyer or lessee must find out by inspection or in other ways that these matters have been properly dealt with and that all information is correct. 4. VAT: The VAT position relating to the property may change without notice.