




Reynolds Salter
Estate Agents

Middle Street, Nazeing, Essex


Reynolds Salter
Estate Agents





A Stunning Four Double Bedroom Eco-Friendly Energy Efficient Country House built in 2019, superbly appointed in a private location off Middle Street in Nazeing. This outstanding family home still has 5 years remaining on its New Home Building Warranty and offers in excess of 2200 sq ft of luxury accommodation presented to an exceptionally high specification throughout. This sumptuous house is approached via a security gated entrance which leads onto an extensive parking area at the front of the property. The gardens/grounds are approaching 1/2 of an acre, and are mainly laid to lawn surrounded by various mature trees and bushes which help give a high degree of privacy. The vendors are also offering the buyer an opportunity to purchase up to 5.4 ACRES of additional land/paddock under separate negotiation. Nazeing is a popular village providing a number of shops, a highly regarded primary school, and a friendly local public house. Broxbourne Mainline Railway Station with its fast and frequent service into London Liverpool Street is approximately 2 miles.

- **Four Bedroom Country House**
- **Plot Approaching 1/2 an Acre**
- **High Specification Finish**
- **Private Location**
- **Security Gated Entrance**
- **Option To Buy Additional Land**

EPC - B

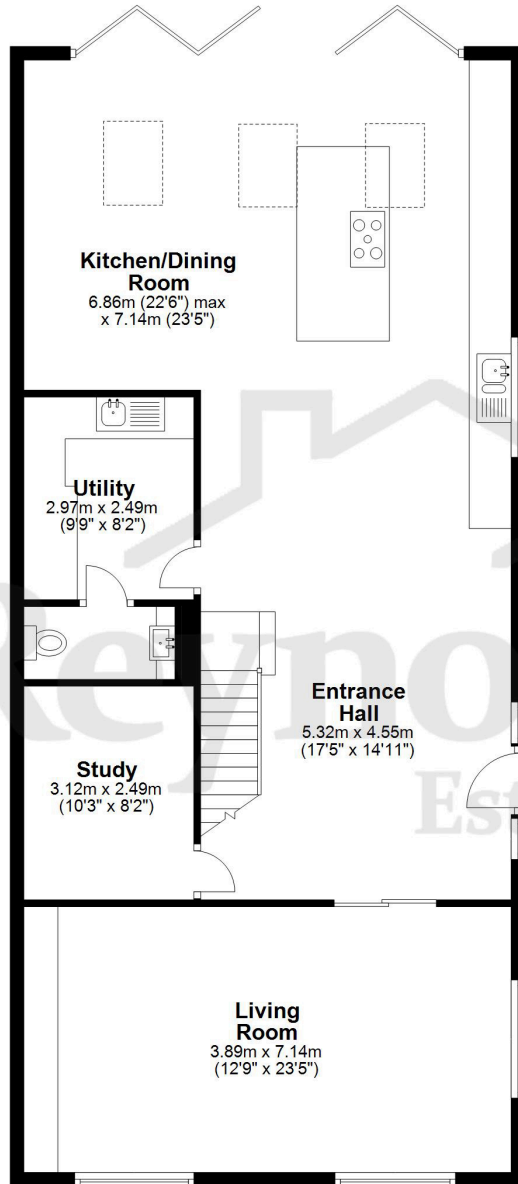


25a High Road, Broxbourne,
Herts, EN10 7HX
www.reynoldssalter.co.uk

01992 449000

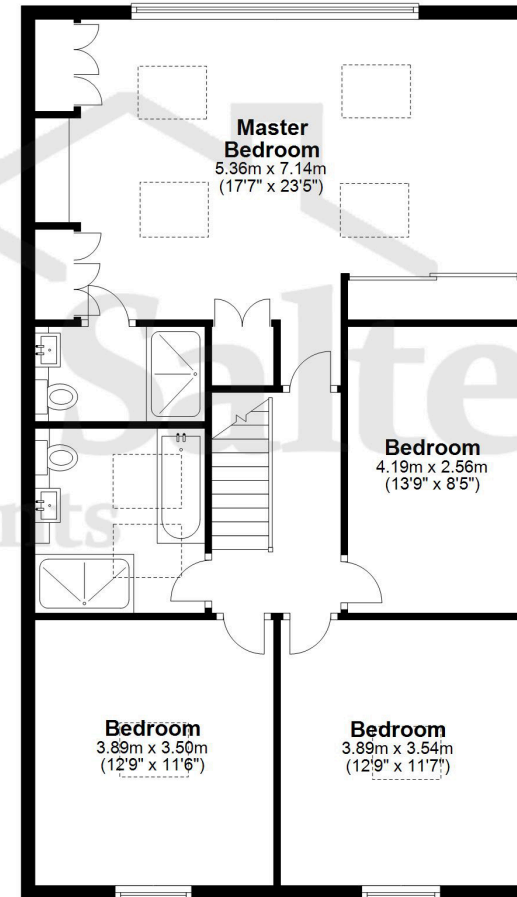
Ground Floor

Approx. 116.1 sq. metres (1249.2 sq. feet)



First Floor

Approx. 90.4 sq. metres (972.9 sq. feet)



Total area: approx. 206.4 sq. metres (2222.1 sq. feet)

THE FLOORPLAN IS FOR ILLUSTRATIVE PURPOSES ONLY AND IS NOT TO SCALE. Measurements and features are approximate and may differ from the actual property. Verify all details independently; no liability is accepted for errors or omissions.

Property marketing provided by www.fotomarketing.co.uk

Important notice

1. Particulars: These particulars are not an offer or contract, nor part of one. You should not rely on statements by Reynolds Salter in the particulars or by word of mouth or in writing ("information") as being factually accurate about the property, its condition or its value. Neither Reynolds Salter nor any joint agent has any authority to make any representations about the property, and accordingly any information given is entirely without responsibility on the part of the agents, seller(s) or lessor(s). 2. Photos etc: The photographs show only certain parts of the property as they appeared at the time they were taken. Areas, measurements and distances given are approximate only. Regulations etc: Any reference to alterations to, or use of, any part of the property does not mean that any necessary planning, building regulations or other consent has been obtained. A buyer or lessee must find out by inspection or in other ways that these matters have been properly dealt with and that all information is correct. 4. VAT: The VAT position relating to the property may change without notice.