



Cowles, Cheshunt, Herts


Reynolds Salter
Estate Agents





A Delightful Three Bedroom End Of Terrace family home, under the same ownership since it was built circa late 1970's, ideally situated tucked away on a SOUTH FACING plot with beautiful front and rear gardens in this sought after cul de sac location close to primary and secondary schools. This lovely family home offers spacious accommodation which includes a 16' Kitchen Diner and a 15' x 12' Lounge and offers scope for extension subject any necessary planning consents. The SOUTH FACING rear garden is a superb addition to the property lovingly maintained over the years to offer a large patio to the rear of the house leading to the lawn which is bordered by mature flower beds with an abundance of plants, flowers, shrubs and a Pear Tree. The front exterior offers a block paved driveway leading to the attached garage along with an attractive front garden which is laid to lawn with decorative stone chippings and gives access to the side pedestrian gate. Cowles is well placed within approximately 0.25 of a mile from Fairfields Primary School and approximately 1 mile form Goffs Academy.

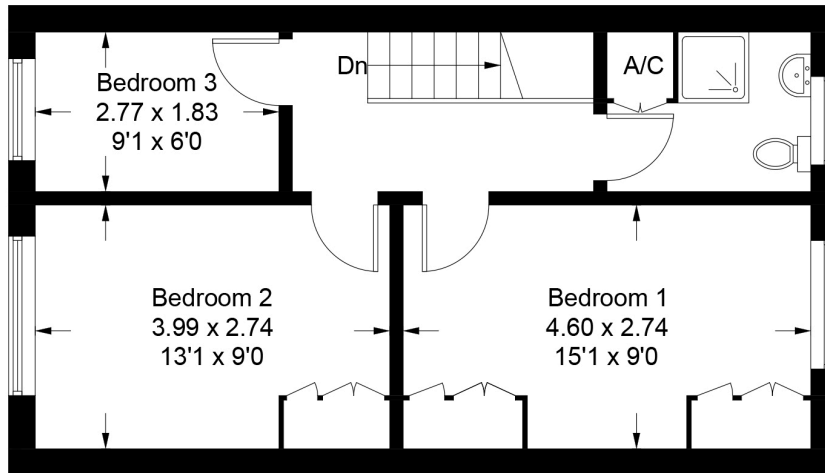
- **End Of Terrace Home**
- **SOUTH FACING Garden**
- **Three Bedrooms**
- **15' x 12' Lounge**
- **16' Kitchen Diner**
- **Garage And Parking**
- **Close To Schools And Amenities**

Cowles

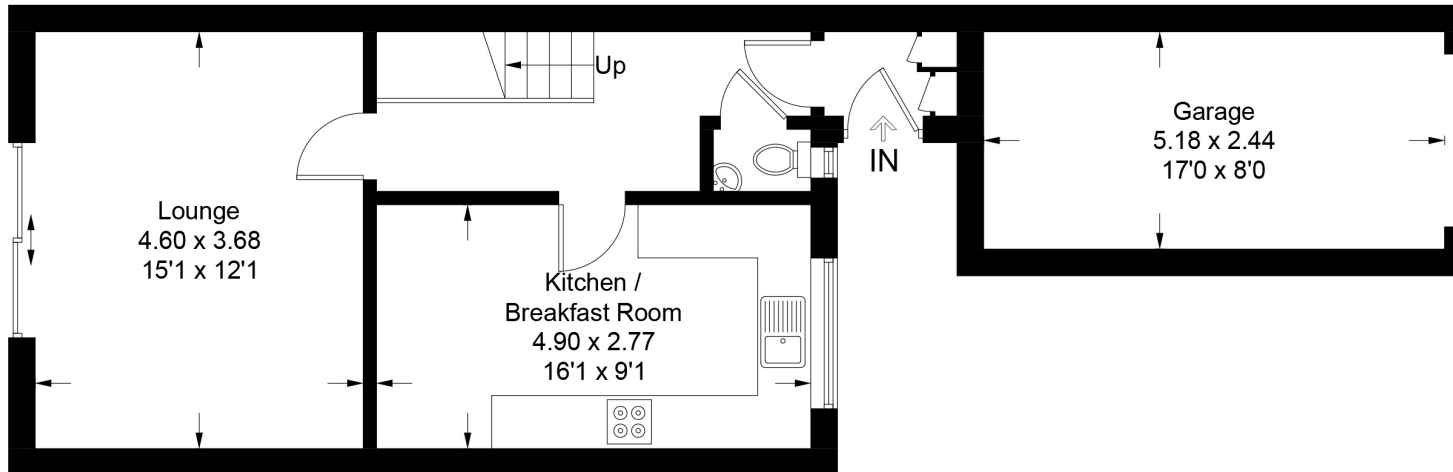
Approximate Gross Internal Area = 84.3 sq m / 907 sq ft

Garage = 12.7 sq m / 137 sq ft

Total = 97.0 sq m / 1044 sq ft



First Floor



Ground Floor

Illustration for identification purposes only, measurements are approximate, not to scale. FloorplansUsketch.com © 2024 (ID1110543)

Important notice

1. Particulars: These particulars are not an offer or contract, nor part of one. You should not rely on statements by Reynolds Salter in the particulars or by word of mouth or in writing ("information") as being factually accurate about the property, its condition or its value. Neither Reynolds Salter nor any joint agent has any authority to make any representations about the property, and accordingly any information given is entirely without responsibility on the part of the agents, seller(s) or lessor(s). 2. Photos etc: The photographs show only certain parts of the property as they appeared at the time they were taken. Areas, measurements and distances given are approximate only. Regulations etc: Any reference to alterations to, or use of, any part of the property does not mean that any necessary planning, building regulations or other consent has been obtained. A buyer or lessee must find out by inspection or in other ways that these matters have been properly dealt with and that all information is correct. 4. VAT: The VAT position relating to the property may change without notice.