



Dark Lane, Cheshunt, Herts


Reynolds Salter
Estate Agents



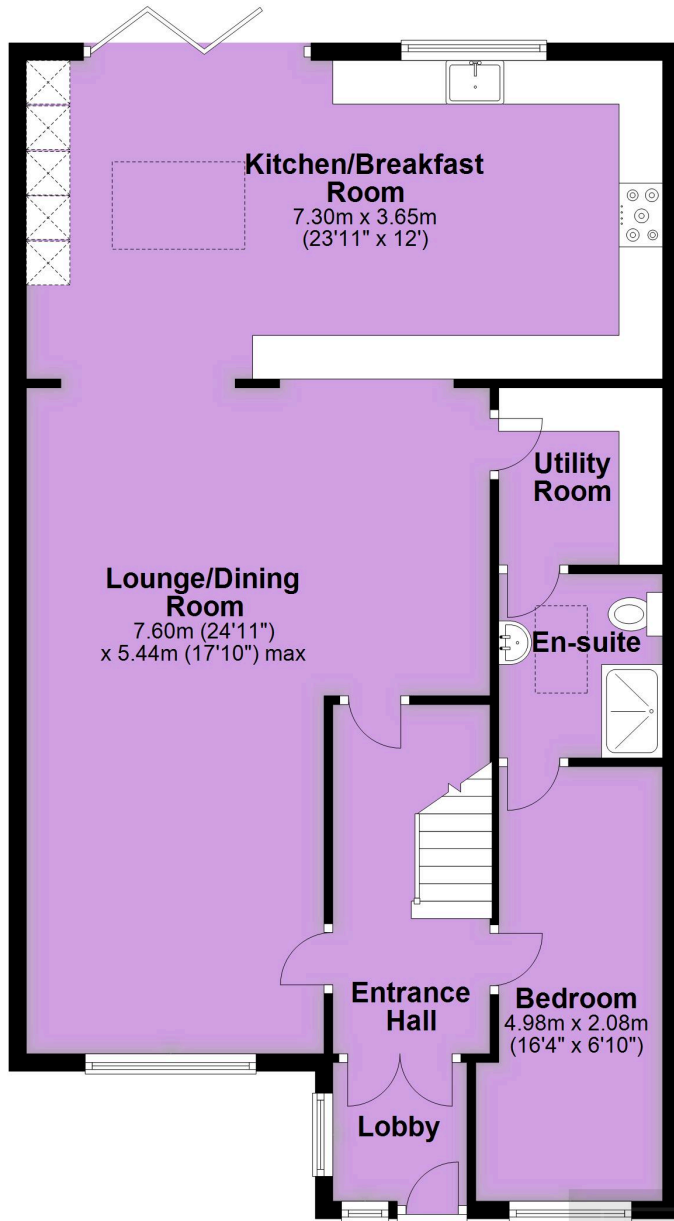


A Fabulous EXTENDED Three/Four Bedroom semi detached home with Stunning open plan ground floor accommodation incorporating a large Lounge Diner and a Kitchen Diner Extension with roof lantern, ideally situated well back from the road in this popular location. In addition to the open plan living accommodation there is also a large fourth Bedroom or extra Reception Room, an En-suite Shower Room, a Utility Room and a large Entrance Porch/Hallway on the ground floor making this delightful home ideal for multi generational living. On the first floor there are a further three spacious bedrooms and a Re-fitted Bathroom. Bi folding doors lead from the Kitchen Diner onto the West facing garden which is a superb addition with a large decking area to the immediate rear of the house along with a further raised patio leading onto the lawn which is bordered by mature bushes and shrubs. The property is situated just a short walk from Bonneygrove Primary School and Goffs Academy and Cheshunt Town centre with mainline station into London Liverpool Street is approximately 1.5 miles.

- **Extended Semi Detached House**
- **Three/Four Bedrooms**
- **Two Bathrooms**
- **Open Plan Accommodation**
- **Stunning Kitchen Diner**
- **Utility Room**
- **Beautiful West Facing Garden**

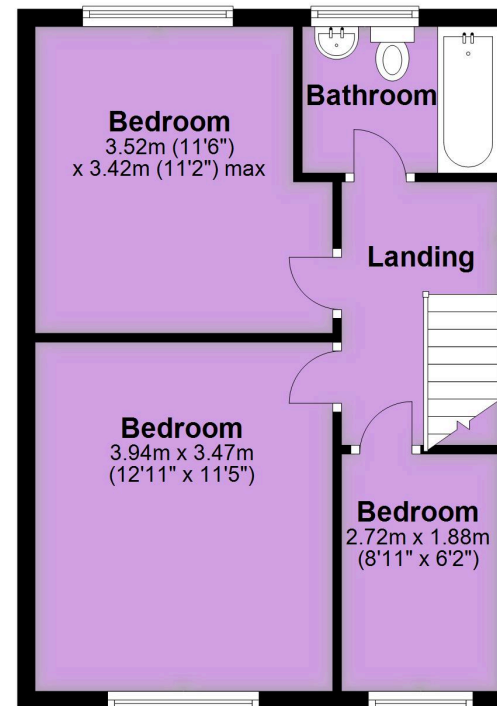
Ground Floor

Approx. 89.5 sq. metres (963.2 sq. feet)



First Floor

Approx. 40.7 sq. metres (438.5 sq. feet)



Total area: approx. 130.2 sq. metres (1401.7 sq. feet)

Important notice

1. Particulars: These particulars are not an offer or contract, nor part of one. You should not rely on statements by Reynolds Salter in the particulars or by word of mouth or in writing ("information") as being factually accurate about the property, its condition or its value. Neither Reynolds Salter nor any joint agent has any authority to make any representations about the property, and accordingly any information given is entirely without responsibility on the part of the agents, seller(s) or lessor(s). 2. Photos etc: The photographs show only certain parts of the property as they appeared at the time they were taken. Areas, measurements and distances given are approximate only. Regulations etc: Any reference to alterations to, or use of, any part of the property does not mean that any necessary planning, building regulations or other consent has been obtained. A buyer or lessee must find out by inspection or in other ways that these matters have been properly dealt with and that all information is correct. 4. VAT: The VAT position relating to the property may change without notice.