



Riversmead, Hoddesdon, Herts.

**Reynolds Salter**  
Estate Agents





CHAIN FREE - A Delightful FOUR DOUBLE BEDROOM DETACHED HOUSE enviably located in this highly regarded peaceful cul-de-sac adjacent to Hoddesdon Town Centre, backing directly onto THE NEW RIVER and OPEN COUNTRYSIDE. This impressive family home provides bright and spacious accommodation presented in excellent decorative order. Accommodation includes a Magnificent 21'4 Open plan Kitchen/Dining and Family Room with Bi-Folding Doors out to the rear garden, a 15' Living Room, Four Double Bedrooms a Bathroom and a Ground Floor Cloakroom. Undoubtedly the main feature of this wonderful home is the outstanding rear garden which backs directly onto The New River with stunning panoramic views across open countryside beyond. The front exterior provides off road parking leading into an integral garage which also offers potential for conversion (STP). Riversmead is conveniently located on the edge of Hoddesdon Town Centre which has an abundance of shops, cafe's, bars and restaurants. Broxbourne Railway Station (London Liverpool Street) is a short 15 minute walk.

- **Detached Family Home**
- **Four Double Bedrooms**
- **Backing River and Countryside**
- **Stunning Views**
- **Close To Town Centre**
- **Chain Free**

EPC - C

The logo for Reynolds Salter Estate Agents features a stylized yellow house icon above the company name. 'Reynolds Salter' is written in a large, bold, black serif font, with 'Estate Agents' in a smaller, black sans-serif font underneath.

**Reynolds Salter**  
Estate Agents

25a High Road, Broxbourne,  
Herts, EN10 7HX  
[www.reynoldssalter.co.uk](http://www.reynoldssalter.co.uk)

01992 449000

# Riversmead, Hoddesdon, Hertfordshire.

Approximate Gross Internal Area = 130.9 sq m / 1409 sq ft

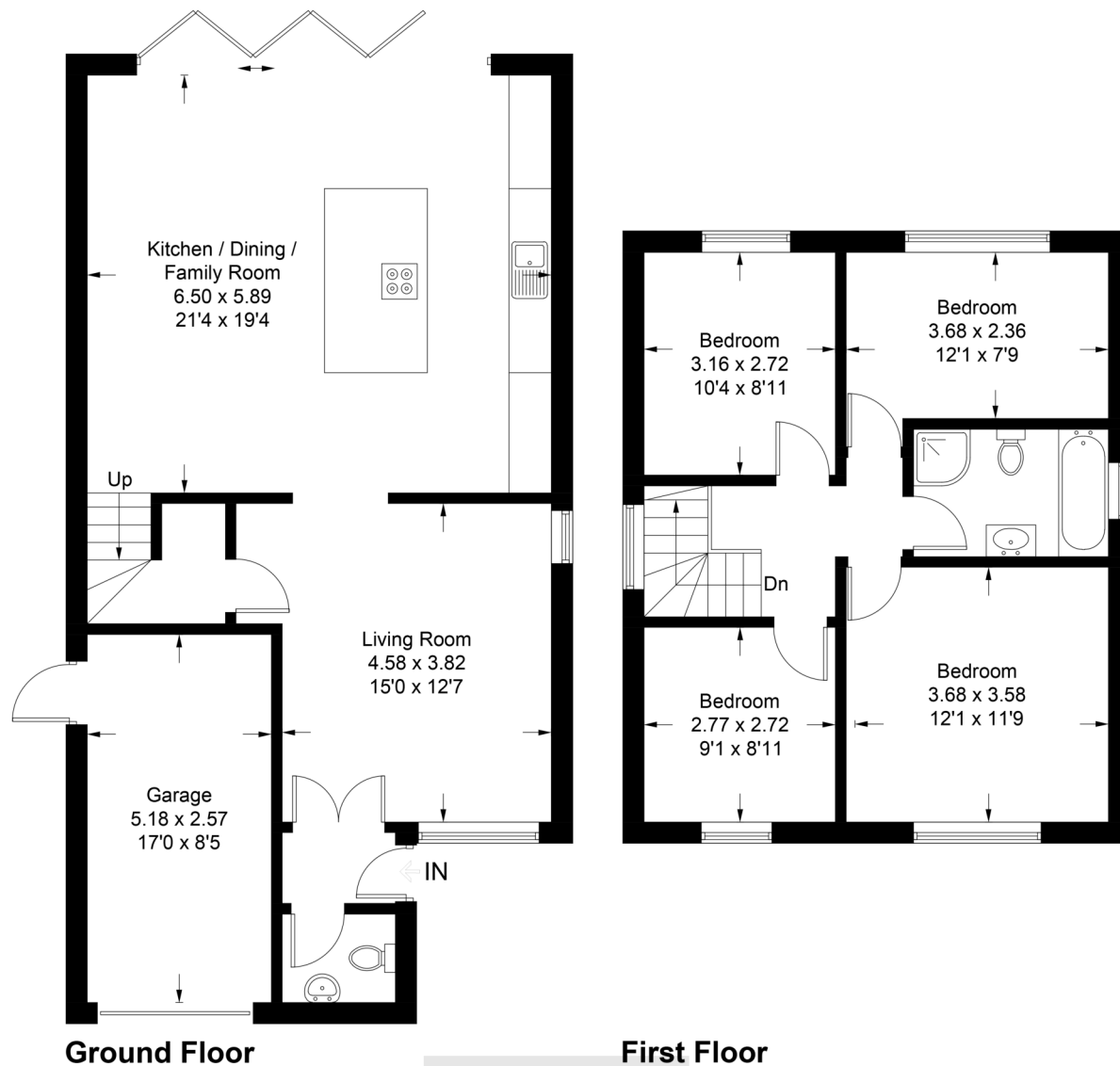


Illustration for identification purposes only, measurements are approximate, not to scale. FloorplansUsketch.com © 2024 (ID1081233)

#### Important notice

1. Particulars: These particulars are not an offer or contract, nor part of one. You should not rely on statements by Reynolds Salter in the particulars or by word of mouth or in writing ("information") as being factually accurate about the property, its condition or its value. Neither Reynolds Salter nor any joint agent has any authority to make any representations about the property, and accordingly any information given is entirely without responsibility on the part of the agents, seller(s) or lessor(s). 2. Photos etc: The photographs show only certain parts of the property as they appeared at the time they were taken. Areas, measurements and distances given are approximate only. Regulations etc: Any reference to alterations to, or use of, any part of the property does not mean that any necessary planning, building regulations or other consent has been obtained. A buyer or lessee must find out by inspection or in other ways that these matters have been properly dealt with and that all information is correct. 4. VAT: The VAT position relating to the property may change without notice.