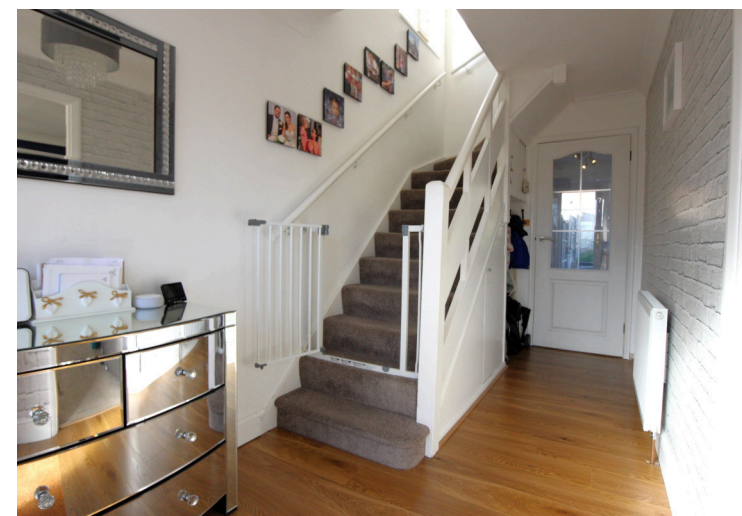




Western Road, Nazeing, Essex


Reynolds Salter
Estate Agents





A Delightful 3 bedroom semi detached house situated on a slightly elevated plot within this peaceful residential location in the heart of Nazeing Village close to the local shops. The property has been greatly improved by the current vendor to include a Re-fitted Family Bathroom and a landscaped rear garden to now offer immaculately presented spacious accommodation throughout. The rear garden is beautifully mature with a large patio to the immediate rear of the house with steps up to the main garden which is laid to lawn. There is a side access gate which leads onto the shared driveway providing access to the detached garage and parking area and the front of the property has been block paved to provide extra off street parking. Nazeing is a popular village providing a number of shops, a highly regarded primary school and a friendly local public house and Broxbourne Railway Station (Liverpool Street) is approximately 2.5 miles.

EPC - D

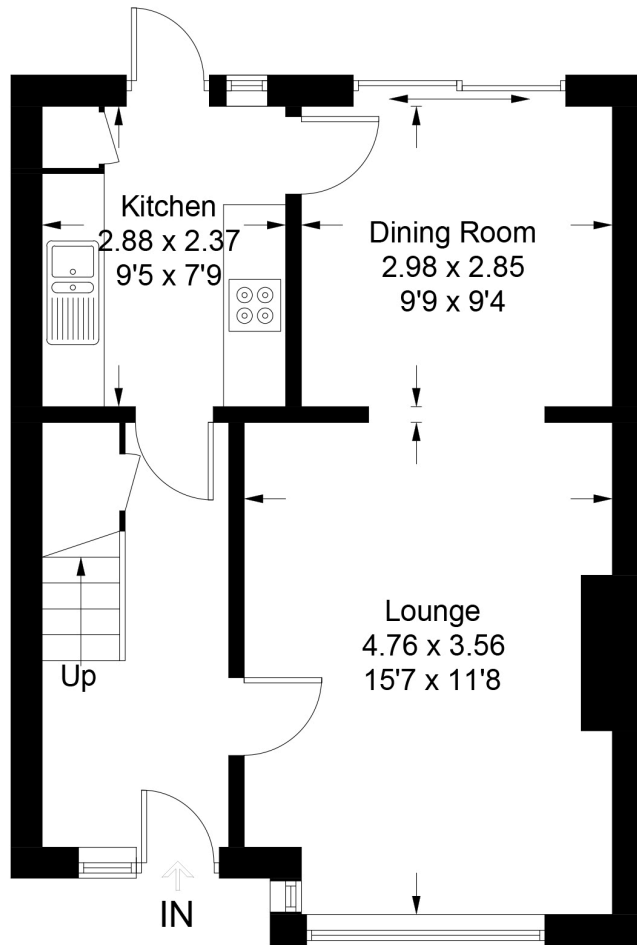
- **Semi Detached House**
- **Immaculately Presented**
- **Three Bedrooms**
- **Re-Fitted Bathroom**
- **Lounge & Dining Room**
- **Mature Rear Garden**
- **Garage And Parking**

Western Road

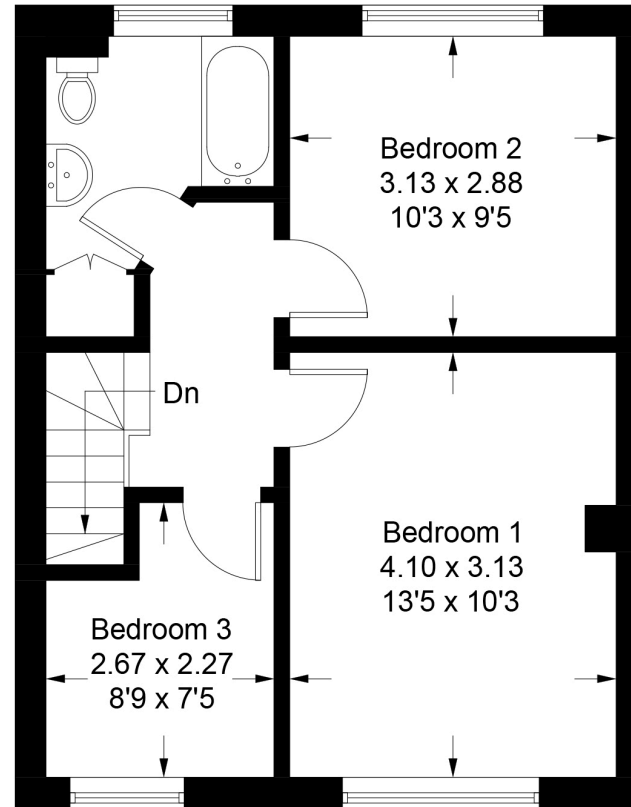
Approximate Gross Internal Area = 81.1 sq m / 873 sq ft

Garage = 13.6 sq m / 146 sq ft

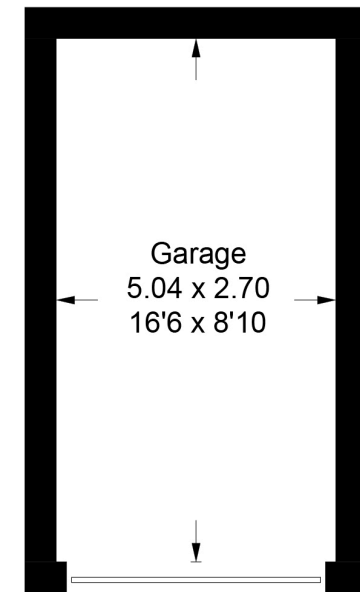
Total = 94.7 sq m / 1019 sq ft



Ground Floor



First Floor



Garage

(Not Shown In Actual
Location / Orientation)

Illustration for identification purposes only, measurements are approximate,
not to scale. FloorplansUsketch.com © 2024 (ID1047923)

Important notice

1. Particulars: These particulars are not an offer or contract, nor part of one. You should not rely on statements by Reynolds Salter in the particulars or by word of mouth or in writing ("information") as being factually accurate about the property, its condition or its value. Neither Reynolds Salter nor any joint agent has any authority to make any representations about the property, and accordingly any information given is entirely without responsibility on the part of the agents, seller(s) or lessor(s). 2. Photos etc: The photographs show only certain parts of the property as they appeared at the time they were taken. Areas, measurements and distances given are approximate only. Regulations etc: Any reference to alterations to, or use of, any part of the property does not mean that any necessary planning, building regulations or other consent has been obtained. A buyer or lessee must find out by inspection or in other ways that these matters have been properly dealt with and that all information is correct. 4. VAT: The VAT position relating to the property may change without notice.