



Hoe Lane, Nazeing, Essex.


Reynolds Salter
Estate Agents





A Spacious Four Bedroom Semi Detached Country House built in the 1950's ideally located in a private semi rural location, sitting in a magnificent plot approaching 2/3rds of an Acre. This charming family home has been tastefully extended over recent years to provide bright and spacious accommodation, but also offers great potential for improvement or renovation. The gardens and grounds are beautifully presented, being mainly laid to lawn surrounded by various mature trees, bushes and shrubs along with a 25' x 25' Detached Studio Annex/Outbuilding with Electricity, Water and Gas. The House is discreetly tucked away in a semi rural location approximately 0.75 of a mile from the centre of Nazeing Village, with its local shopping parade, popular public house and a highly regarded primary school. Broxbourne Mainline Railway Station with its fast and frequent service into London Liverpool Street is approximately 2.5 miles. AGENTS NOTE - We are advised by the vendor that he wishes to place an overage on the side garden against any further planning permission of 10% over a 15 year period.

- **Semi Detached Country House**
- **Four Bedroom Three Reception**
- **2/3rds of an Acre Plot**
- **Potential For Improvement**
- **Detached Studio/Outbuilding**
- **Chain Free**

EPC - C

The logo for Reynolds Salter Estate Agents, featuring a stylized yellow house outline above the company name in a serif font, with 'Estate Agents' in a smaller sans-serif font below.

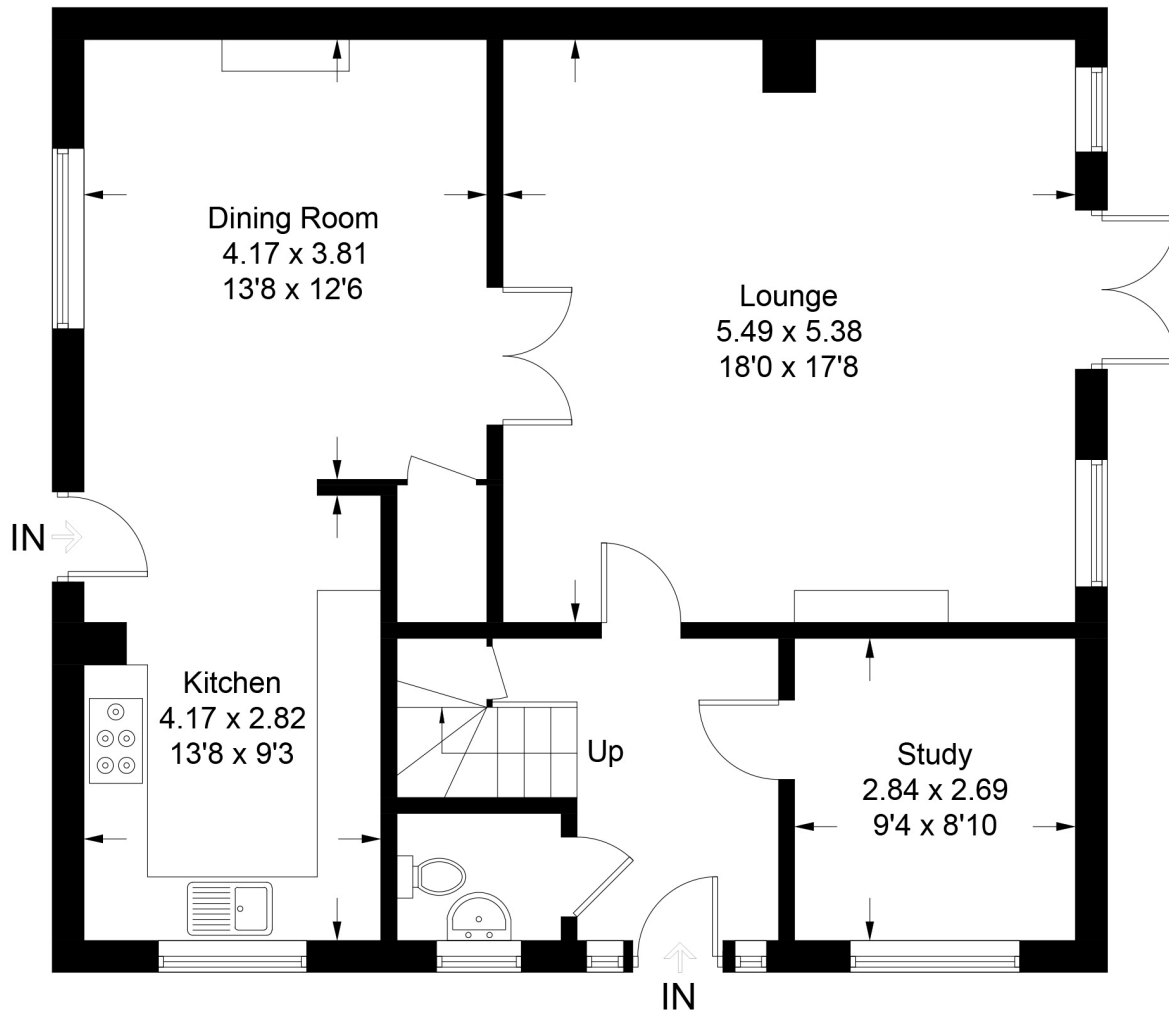
Reynolds Salter
Estate Agents

25a High Road, Broxbourne,
Herts, EN10 7HX
www.reynoldssalter.co.uk

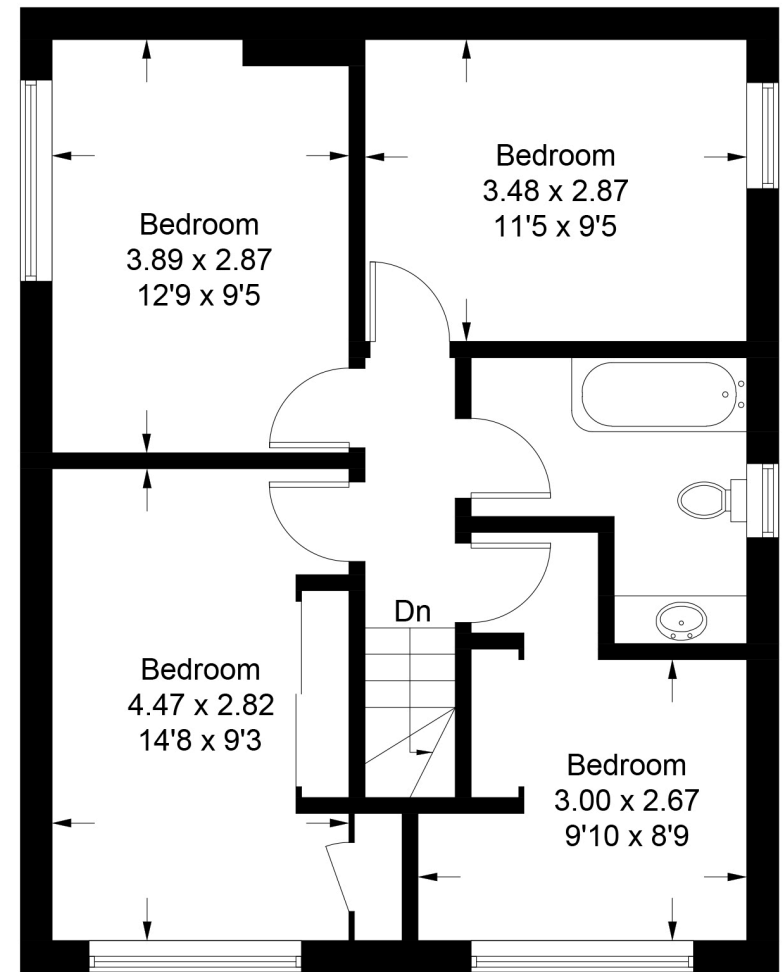
01992 449000

2 Coronation Cottages

Approximate Gross Internal Area = 135.6 sq m / 1459 sq ft



Ground Floor



First Floor

Illustration for identification purposes only, measurements are approximate, not to scale. FloorplansUsketch.com © 2023 (ID965194)

Important notice

1. Particulars: These particulars are not an offer or contract, nor part of one. You should not rely on statements by Reynolds Salter in the particulars or by word of mouth or in writing ("information") as being factually accurate about the property, its condition or its value. Neither Reynolds Salter nor any joint agent has any authority to make any representations about the property, and accordingly any information given is entirely without responsibility on the part of the agents, seller(s) or lessor(s). 2. Photos etc: The photographs show only certain parts of the property as they appeared at the time they were taken. Areas, measurements and distances given are approximate only. Regulations etc: Any reference to alterations to, or use of, any part of the property does not mean that any necessary planning, building regulations or other consent has been obtained. A buyer or lessee must find out by inspection or in other ways that these matters have been properly dealt with and that all information is correct. 4. VAT: The VAT position relating to the property may change without notice.