



Monument Hill, Weybridge, KT13 8RD





Three bedroom maisonettes are difficult to find in Weybridge, especially in such a central location.

Situated on Monument Hill, metres from Weybridge High Street and Temple Market shops, the River Thames and Weybridge mainline railway station are also just a short distance away.

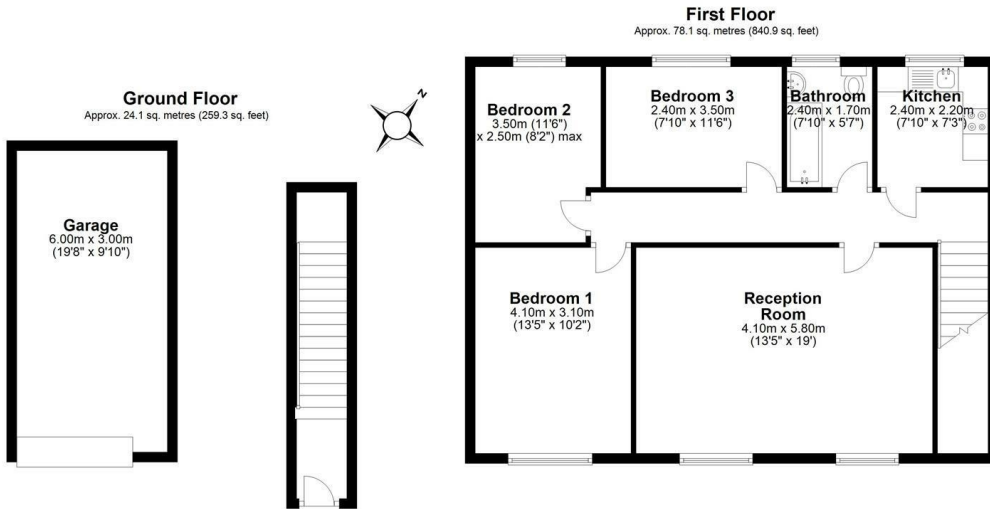
This spacious first floor property boasts three good sized bedrooms, a large reception room, kitchen, and a bathroom.

One of the standout features of this property is the garage in a nearby block, a rare find in this desirable location.

Whether you're a first-time buyer looking to step onto the property ladder or a seasoned investor seeking a lucrative opportunity, this maisonette presents a versatile option for a range of buyers.

Leasehold





Total area: approx. 102.2 sq. metres (1100.2 sq. feet)

Floor Plan measurements are approximate and are for illustrative purposes only.
Plan produced using PlanUp.



EPC Rating: 53 E





Grants Homes 60 Church Street, Weybridge, Surrey, KT13 8DL
T: 01932 841020 E: weybridge@grantshomes.co.uk