



Glencoe Road, Weybridge, KT13 8JY

**g**  
**GRANTS**  
**HOMES**





A rare opportunity to acquire a detached Victorian Villa in one of central Weybridge's most popular roads. Set in a quiet residential road of similar age character properties within a short walk of Weybridge High Street and stunning River walks along the Thames and Wey. The area is always popular with young couples and families due to its proximity to the popular local schools.

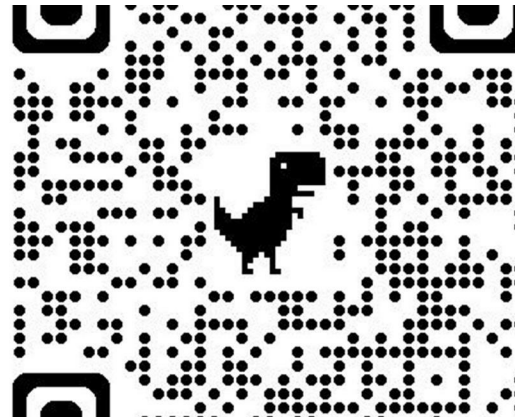
For Sale for the first time in decades, this pretty detached house requires complete refurbishment, providing the new owners the opportunity to create a stunning period home. The property maintains some lovely original features including feature fireplaces, high ceilings, and exposed wood flooring. A unique selling point of the home is the garage and driveway to the side of the property providing valuable off-street parking.

The light and spacious accommodation includes a large sitting room with a bay window and wood flooring, a large dining room with exposed wood floors, kitchen, utility room and a large downstairs cloakroom. Stairs rise from the entrance hall to the first floor where you will find three good sized bedrooms, the principal bedroom being a lovely large and light room with a bay window, and a bathroom.

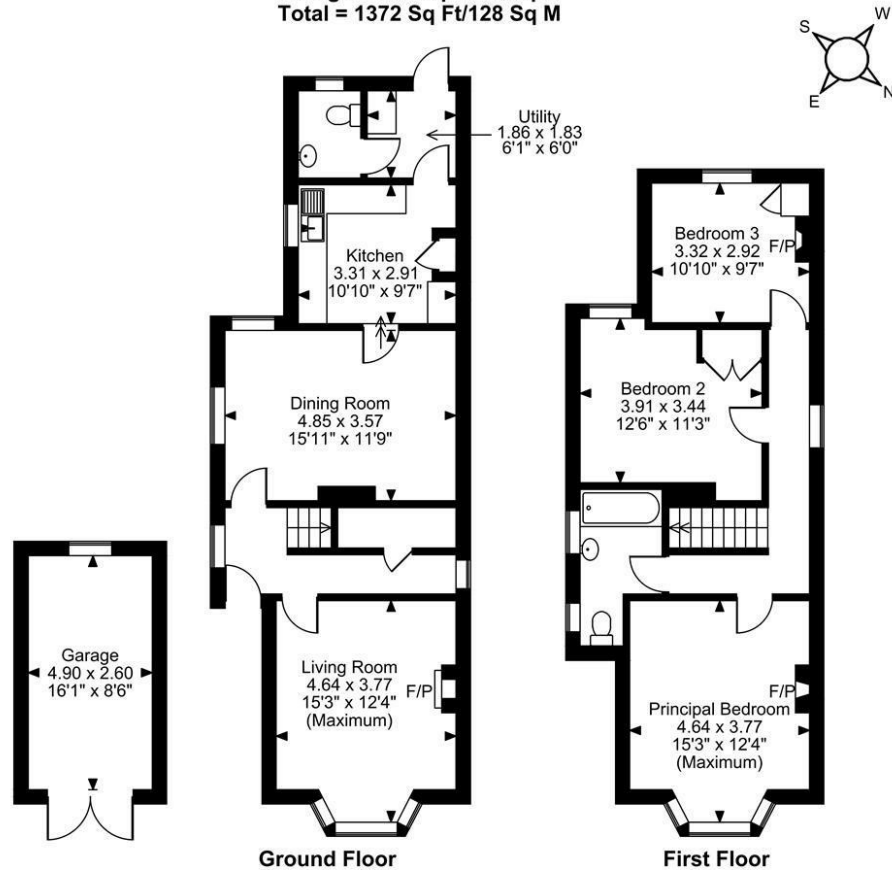
Outside there is a mature southerly aspect rear garden with a portion the side giving access to the walled front garden and the garage.

Offered For Sale with no onward chain, this sought after Character home offers huge potential to modernise and extend (STPP).

Freehold



Approximate Gross Internal Area  
 Main House = 1235 Sq Ft/115 Sq M  
 Garage = 137 Sq Ft/13 Sq M  
 Total = 1372 Sq Ft/128 Sq M



FOR ILLUSTRATIVE PURPOSES ONLY - NOT TO SCALE

The position & size of doors, windows, appliances and other features are approximate only.  
 © ehouse. Unauthorised reproduction prohibited. Drawing ref. dig/8651454/NJD







Grants Homes 60 Church Street Weybridge KT13 8DL  
T: 01932 841020 E: [weybridge@grantshomes.co.uk](mailto:weybridge@grantshomes.co.uk)

**g**  
**GRANTS**  
**HOMES**