



Molyneux Road, Weybridge, KT13 8UR





Rosemary Cottage is a delightful character property, quietly tucked away in a peaceful cul-de-sac, perfectly positioned between Weybridge railway station and the High Street. This charming cottage boasts a beautiful garden and offers lovely views over the allotments at the rear.

The property features a well-preserved interior, creating a warm and inviting atmosphere. The ground floor includes a sitting room with a feature bay window, a dining room, and a kitchen. Upstairs, you will find two bedrooms, with the principal bedroom benefiting from two windows that flood the space with natural light, along with built-in wardrobes. The bathroom completes the upstairs accommodation.

Outside, there is a charming rear garden with views of the allotments. The property also offers potential for extension (STPP).

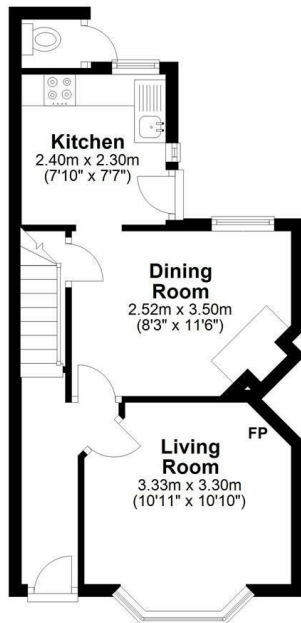
Offered for sale with no onward chain, this period cottage is nestled in one of Weybridge's most desirable and sought-after locations.

Freehold



Ground Floor

Approx. 30.0 sq. metres (323.2 sq. feet)



First Floor

Approx. 29.1 sq. metres (313.3 sq. feet)



Total area: approx. 59.1 sq. metres (636.4 sq. feet)

Floor Plan measurements are approximate and are for illustrative purposes only.
Plan produced using PlanUp.



EPC Rating: 64 D

g
GRANTS
HOMES



Grants Homes 60 Church Street, Weybridge, Surrey, KT13 8DL
T: 01932 841020 E: weybridge@grantshomes.co.uk

