



Monument Road, Weybridge, KT13 8QY





Located in central Weybridge just yards from the High Street, this well presented home has a modern contemporary feel with light and spacious accommodation and a fantastic size rear garden.

A long driveway leads to the property with a pitched roof entrance porch. The entrance hallway has wood flooring, and a downstairs cloakroom has been refitted to include a WC, hand basin, heated towel rail and tiled flooring.

The kitchen offers a range of eye and base level storage units. The sitting room is located at the back of the house and enjoys lovely views of the rear garden. This spacious room has ample space for a dining table and the storage cupboard has space and fittings for a washing machine. A door opens to a decked area which leads to the large easterly aspect rear garden which is mainly laid to lawn.

On the first floor there are two bedrooms. The main bedroom is a large room with ample built in wardrobe space. The second bedroom is a decent size double which overlooks the rear garden. The modern luxury bathroom is fitted with a white suite, rain head shower, WC, and hand basin.

Outside to the front a driveway provides parking for at least two cars. The property is conveniently situated for many of Weybridge's most popular schools, High Street, River Thames, and the mainline railway station.

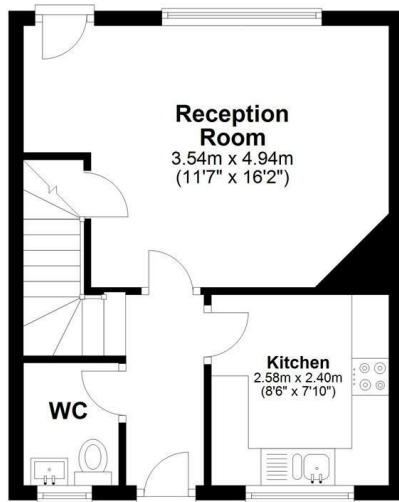
Pleas note: Some of the images displayed are from a previous tenancy and therefore the furniture may be different.

Freehold



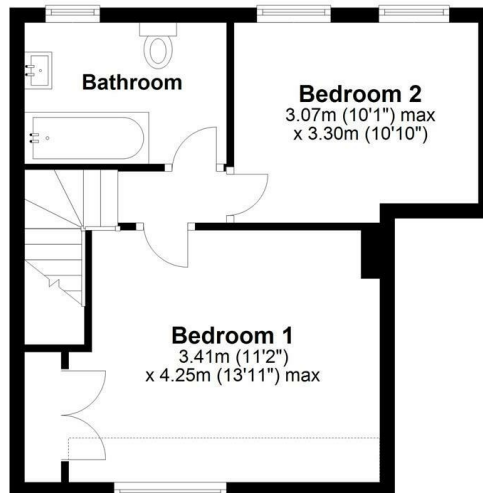
Ground Floor

Approx. 30.7 sq. metres (330.7 sq. feet)



First Floor

Approx. 33.7 sq. metres (363.1 sq. feet)



Total area: approx. 64.5 sq. metres (693.9 sq. feet)

Floor Plan measurements are approximate and are for illustrative purposes only.
Plan produced using PlanUp.



EPC Rating: 65 D





Grants Homes 60 Church Street, Weybridge, Surrey, KT13 8DL
T: 01932 841020 E: weybridge@grantshomes.co.uk

