



Adelaide Place, Weybridge, KT13 9PU





Tucked away at the end of a small road of character homes, this two bedroom end of terrace character cottage is located in the heart of Oatlands Village in Weybridge. The local Village amenities are just a stone's throw away as are the extremely popular local schools, with Oatlands Primary at the end of the road, and Cleves and Heathside schools also within easy reach.

The cottage itself has been updated and modernised to adapt to modern family life, yet keeping popular character features including fireplaces and exposed wood flooring. A standout feature to this lovely home has to be the large eat-in kitchen breakfast room and double doors opening onto the southern easterly aspect rear garden. This lovely room is flooded with natural light from the skylights in the vaulted ceiling and is fitted with a modern white kitchen, underfloor heated and tiled flooring, and ample room for a large dining table.

The two further reception rooms both have exposed wooden floorboards and fireplaces which create a lovely focal point for both rooms.

The bathroom is fitted with a modern white bathroom suite, part tiled walls, WC, and wash basin with vanity storage below.

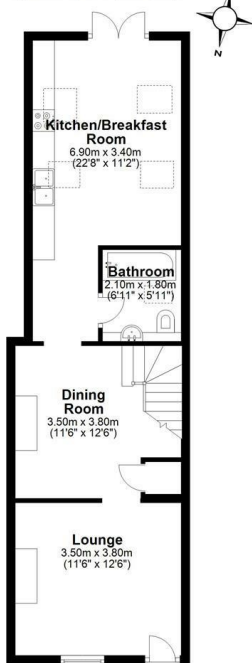
Upstairs, there are two double bedrooms both of which have feature fireplaces.

Outside the large south easterly aspect rear garden measures over 60ft. Walled along one side, the garden is mainly laid to lawn, with a decked area and side access to the front of the property.

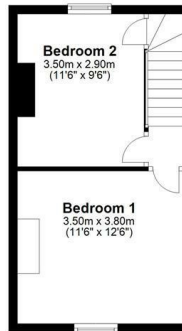
Freehold



Ground Floor
Approx. 50.8 sq. metres (546.6 sq. feet)



First Floor
Approx. 27.0 sq. metres (290.4 sq. feet)



Total area: approx. 77.8 sq. metres (837.0 sq. feet)

Floor Plan measurements are approximate and are for illustrative purposes only.
Plan produced using PlanUp.



EPC Rating: 56 D





Grants Homes 60 Church Street, Weybridge, Surrey, KT13 8DL
T: 01932 841020 E: weybridge@grantshomes.co.uk

g
GRANTS
HOMES