



Caenshill House, Chaucer Avenue, Weybridge, KT13 0PB



This impressively proportioned duplex apartment offers flexible accommodation in a highly regarded modern gated development perfectly located for Weybridge mainline railway station. Along with its unique and flexible space, the property also has the rare benefit of two parking spaces and two balconies.

Electric security gates open to the impressive private development, with an entry phone controlled lobby provides lift and stair access to the second floor. A large entrance hall welcomes you to the property where you will find a lovely reception room with double doors opening onto a balcony which provides elevated, far-reaching views. There is also a similar balcony in the room which the vendors currently used as a dining room, originally designed to be a bedroom with a shower room with WC.

The kitchen/dining room is a lovely large area fitted with modern high quality units, appliances, work surfaces and integrated dining/breakfast bar areas. There is also a separate guest cloakroom and W.C on this floor.

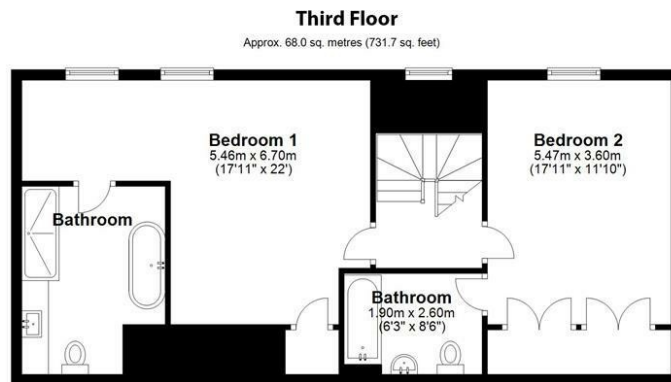
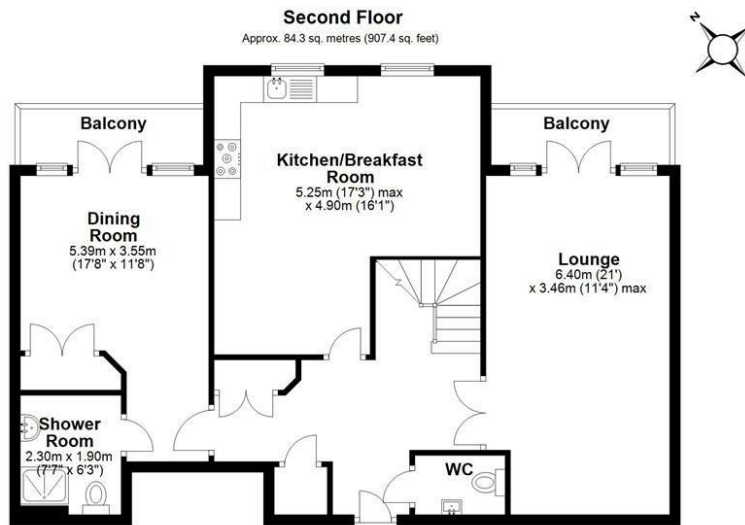
A staircase leads from the hall to the first floor landing where you will find two spacious bedrooms, both enjoying full en-suite bathrooms.

Mature communal grounds and an area of woodland surround the development. The apartment benefits from two allocated parking spaces set behind the electric security gates.

A generously sized property offering a multitude of layout options and located within a short walk of Weybridge mainline railway station, viewings are highly recommended to appreciate this wonderful property.

Leasehold - Share of Freehold





Total area: approx. 152.3 sq. metres (1639.0 sq. feet)

Floor Plan measurements are approximate and are for illustrative purposes only.
Plan produced using PlanUp.





Grants Homes 60 Church Street Weybridge KT13 8DL
T: 01932 841020 E: weybridge@grantshomes.co.uk

g
GRANTS
HOMES