



Trelawney Grove, Weybridge, KT13 8SS





Trelawney Grove is a highly desirable and quiet cul de sac on Elgin Road in Weybridge, one of the closest residential roads to Weybridge mainline railway station. The location is also ideal for Weybridge High Street, Cricket Green, and Queens Road shops.

The detached four bedroom home is in need of modernisation, offering the new owners an excellent opportunity to create their perfect family home in one of the most convenient and sought after locations in central Weybridge.

Current accommodation consists of a sitting room, dining room, kitchen/breakfast room, office/family room, and a conservatory to the rear which opens onto the mature and well maintained southerly aspect rear garden.

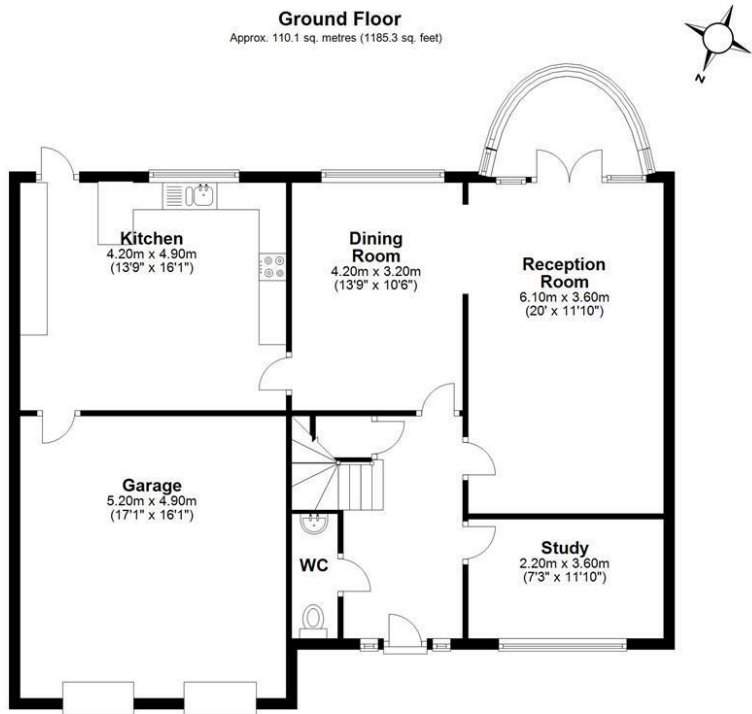
Upstairs, the principal bedroom overlooks the gardens and woodland the rear of the property and has an en suite bathroom and built in wardrobes. There are three further excellent sized bedrooms, and a family bathroom on the first floor.

A block paved driveway leads to the double garage, with a front lawned garden to the side of the driveway. The lovely rear garden backs onto the woodland of Weybridge Heath. They are mainly laid to lawn with well stocked mature flower and shrub borders, and a patio accessed from the kitchen breakfast room.

Offered For Sale with no onward chain, this four bedroom house a must see of anyone looking renovate a family home in a sought after road in central Weybridge.

Freehold





Total area: approx. 182.0 sq. metres (1958.7 sq. feet)

Floor Plan measurements are approximate and are for illustrative purposes only.
Plan produced using PlanUp.

EPC: D65





Grants Homes 60 Church Street Weybridge KT13 8DL
T: 01932 841020 E: weybridge@grantshomes.co.uk

