



Queensborough House South, Oatlands Chase,  
Wevbridge. KT13 9SF







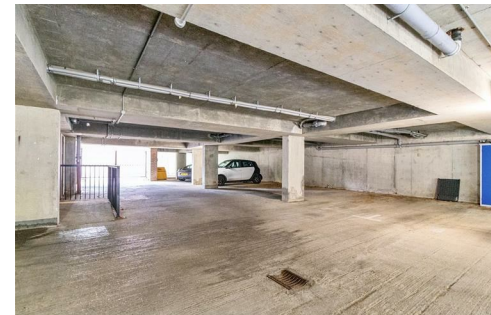
Queensborough House is a development of luxury apartments built by Grenville Homes located in Oatlands Village, Weybridge. Set behind electric gates with underground basement parking, the apartments are always some of the most sought after in the area due to Grenville Homes high specification and their excellent location, convenient for both Weybridge & Walton on Thames town centres and Walton mainline railway station.

The apartment can be accessed via a lift from the ground floor main entrance or direct from the underground parking. Well presented communal entrance halls lead to the front door of the apartment. The large double aspect reception room area has plenty of room for a living and dining areas, and a bay window with double doors and a Juliet balcony. The kitchen is fitted with a range of eye and base levels units, granite work surfaces, and built in appliances including an oven, microwave, fridge/freezer and gas hob.

The principal bedroom has a large built in corner wardrobe, and an en suite shower room with a large walk in shower, WC, and hand basin. The guest bedroom has triple wardrobes and double doors with a Juliet balcony. The main bathroom has a white suite with a bath, part tiled walls, WC and wash basin.

Outside the communal grounds are set behind electric gates with a video entry system. The mature well manicured gardens surround the building and the southerly aspect communal gardens to the rear are vast and impressive. There is an allocated parking bay in the secure underground parking basement.

Offered for sale with no onward chain this superb apartment is situated in a convenient position for Oatlands, Weybridge, and Walton shops and amenities and also within easy reach of Walton mainline station.



Leasehold



Total area: approx. 85.3 sq. metres (918.5 sq. feet)

Floor Plan measurements are approximate and are for illustrative purposes only.  
Plan produced using PlanUp.



EPC Rating: 82 B



Grants Homes 60 Church Street, Weybridge, Surrey, KT13 8DL  
T: 01932 841020 E: [weybridge@grantshomes.co.uk](mailto:weybridge@grantshomes.co.uk)

