



Stroudwater Park, Weybridge, KT13 0DT





Offered For Sale with No onward chain, this spacious apartment benefits from a large private balcony overlooking the mature communal grounds in the centre of Stroudwater Park, a popular development of apartments on St Georges Avenue within a short walk of Weybridge mainline railway station and convenient for the Queens Road shops, cafés, bars, and restaurants.

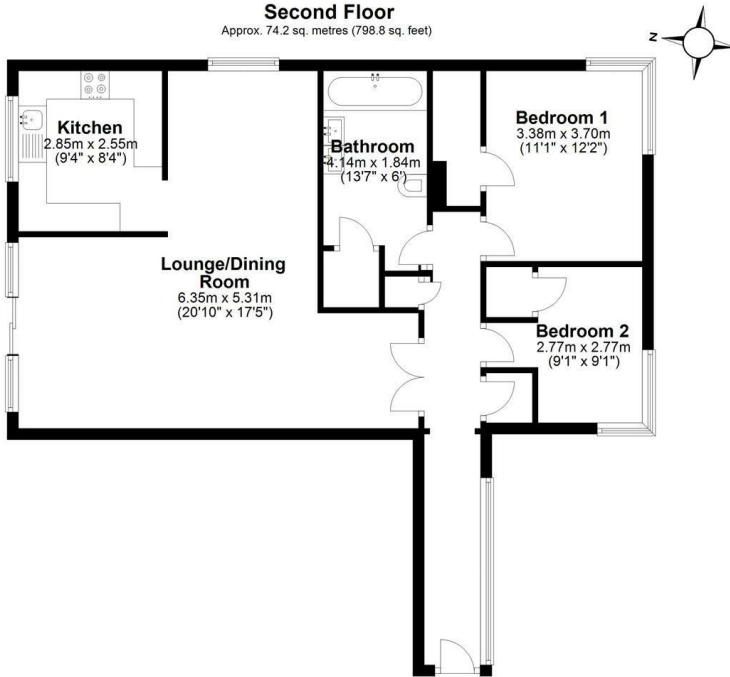
The large reception room has sliding door leading onto the balcony. The light and spacious L shaped room has two areas ideal for a sitting area and a dining area, with the fitted kitchen accessed from the dining area.

There are two bedrooms, both featuring corner windows providing dual aspects and making the rooms feel light. The main bedroom has a very large built-in wardrobe. The modern fitted bathroom is an excellent size and features a bath with shower, white suite, part tiled walls, tiled flooring, and a double vanity with storage underneath.

Outside there are mature well maintained communal gardens, an allocated parking space, and a garage in a nearby block.

Leasehold





Total area: approx. 74.2 sq. metres (798.8 sq. feet)

Floor Plan measurements are approximate and are for illustrative purposes only.  
Plan produced using PlanUp.



EPC Rating: 66 D





Grants Homes 60 Church Street, Weybridge, Surrey, KT13 8DL  
T: 01932 841020 E: [weybridge@grantshomes.co.uk](mailto:weybridge@grantshomes.co.uk)