



Stroudwater Park, St Georges Avenue, Weybridge, KT13 0DT



Offered for sale with no onward chain, this spacious ground floor apartment benefits from a large private terrace opening onto mature communal gardens which can be accessed from both the sitting room and the main bedroom. The westerly aspect of the terrace means it enjoys afternoon sun and views over the vast grounds in the centre of the development.

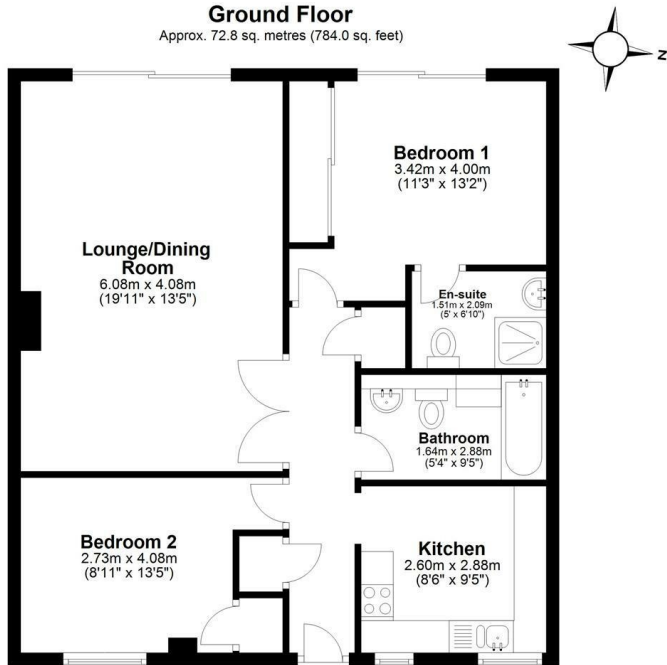
Stroudwater Park is a popular development situated within a short walk of Weybridge mainline railway station and Located on the slopes to St Georges Hill which is convenient for the Queens Road shops, cafés, bars and restaurants.

The ground floor properties in the development are well known for their spacious rooms and lovely high ceilings. The large reception room has sliding doors leading on the patio area. The kitchen is fitted with a range of eye and base level white units with a built in oven, hob and extractor. The main bedroom has built in wardrobes, sliding doors opening onto the patio, and an en suite shower room. There is a further double bedroom with built in cupboard storage space and a main bathroom.

Outside there are mature well maintained communal gardens, garage in a nearby block, an allocated parking space, and ample visitors parking.



Leasehold - Share of Freehold



Total area: approx. 72.8 sq. metres (784.0 sq. feet)

Floor Plan measurements are approximate and are for illustrative purposes only.  
Plan produced using PlanUp.

EPC Rating: 72 C





Grants Homes 60 Church Street, Weybridge, Surrey, KT13 8DL  
T: 01932 841020 E: [weybridge@grantshomes.co.uk](mailto:weybridge@grantshomes.co.uk)

