



Brockley Combe, Oatlands, Weybridge, KT13 9QB



Situated in a popular development in the heart of Oatlands, convenient for both Weybridge and Walton town centres and mainline railway stations, this property is also conveniently located for the most popular schools in the area.

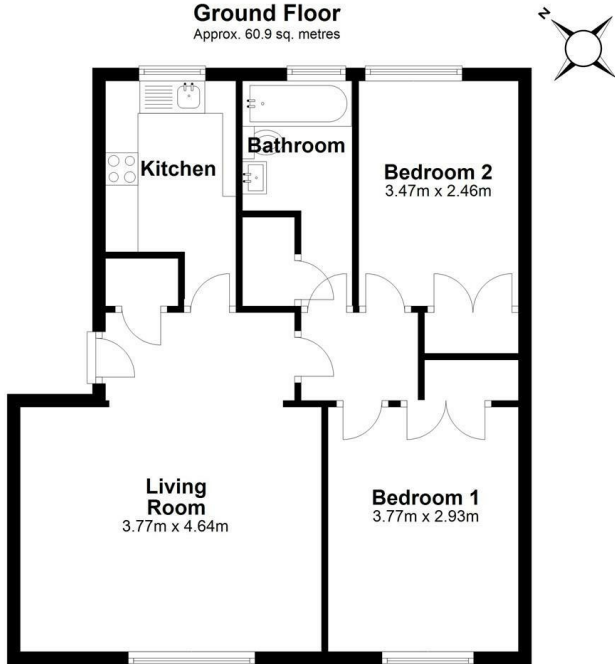
This ground floor apartment offers light and spacious accommodation and comprises two double bedrooms both of which have built in wardrobes. The large, bright living room has pleasant views of the communal gardens and room for a sitting and a dining area. The fitted kitchen has a range of base level and eye level storage cupboards. The bathroom consists of a white bathroom suite with a shower over the bath, tiled walls, WC and wash basin.

Outside the development is surrounded with mature and well maintained communal gardens, parking, and a garage in a nearby block.

The property is in a superb position for Oatlands Village, Queens Road shops, and Weybridge and Walton on Thames mainline railway stations.

Leasehold - Share of Freehold





Total area: approx. 60.9 sq. metres

Floor Plan measurements are approximate and are for illustrative purposes only.
Plan produced using PlanUp.



EPC Rating: 61 D





Grants Homes 60 Church Street, Weybridge, Surrey, KT13 8DL
T: 01932 841020 E: weybridge@grantshomes.co.uk

