



Towers Walk, Weybridge, KT13 0DF





Oak Cottage is a delightful, detached home tucked away at the end of Towers Walk, a little-known road on St Georges Avenue on the slopes to St Georges Hill. The property is located just a few hundred yards from Weybridge mainline railway station, and conveniently situated for both the Queens Road shops and Weybridge High Street.

A unique and interesting home, the property offers flexible accommodation with scope for the new owners to put their own stamp on the property and extend/modernise (STPP) should they wish to do so.

The beautiful rear garden is a standout feature of the property. Measuring approximately 120ft, the mature and well-maintained garden offers a vast area of lawn, a recently laid patio area, and plenty of well stocked flower and shrub borders. The front garden is also vast with a carriage driveway with plenty of parking space for many vehicles and a garage.

The living accommodation is entered by a large hallway, two of the reception rooms are located at the rear of the home and both benefit from bay double doors leading out onto the patio and garden beyond. The larger of the two rooms is the sitting room with a fireplace, the dining room is a lovely room with reconditioned parquet flooring.

A further reception room located at the front of the property would make an ideal family/playroom, home office, or fourth bedroom. The kitchen is fitted with eye and base level storage units, tiled flooring, and access to the side of the property. A shower room and WC complete the downstairs accommodation.

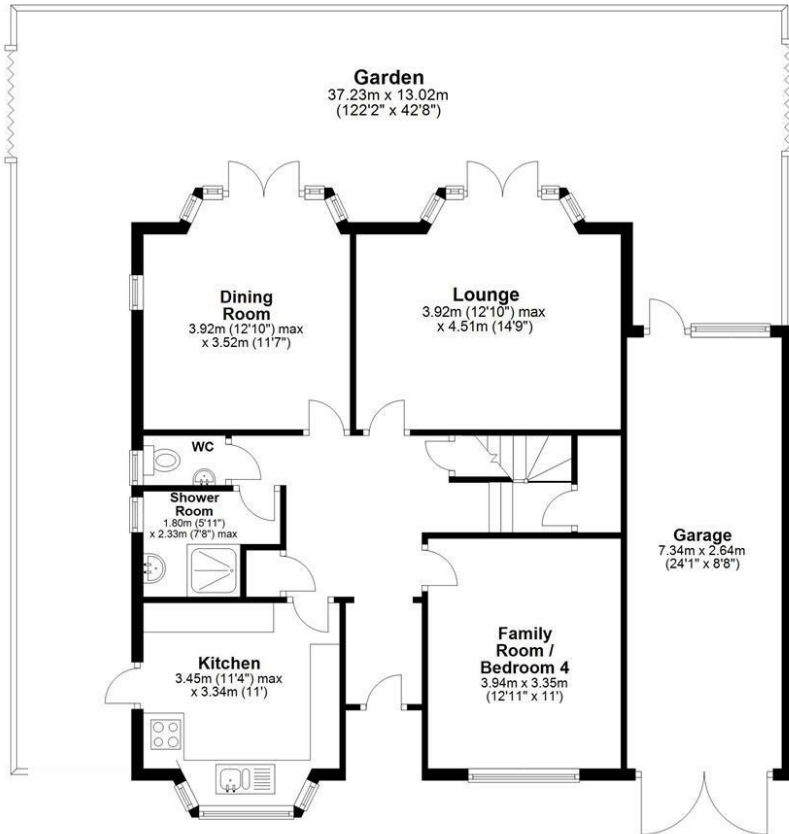
Stairs rise and turn from the hallway to the first floor where there are three bedrooms and a family bathroom. All have built-in wardrobes, and the two principal bedrooms have views to the rear over the garden.

Freehold



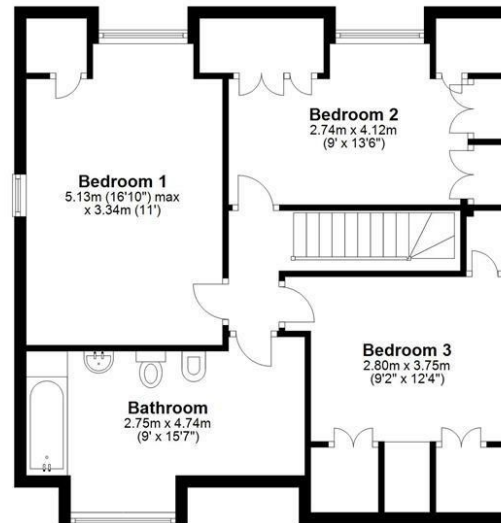
Ground Floor

Main area: approx. 78.2 sq. metres (841.4 sq. feet)
Plus garages, approx. 19.4 sq. metres (208.4 sq. feet)



First Floor

Approx. 64.8 sq. metres (697.1 sq. feet)



Main area: Approx. 142.9 sq. metres (1538.5 sq. feet)
Plus garages, approx. 19.4 sq. metres (208.4 sq. feet)

Floor Plan measurements are approximate and are for illustrative purposes only
Plan produced using PlanUp.





Grants Homes 60 Church Street Weybridge KT13 8DL
T: 01932 841020 E: weybridge@grantshomes.co.uk

