



## BEAVOR LANE

London W6





# EIGHT AWARD-WINNING CONTEMPORARY TOWNHOUSES

Merchant Terrace is a stunning collection of eight award-winning contemporary townhouses, thoughtfully developed by the boutique firm Fruition Properties in 2017.



Local Authority: London Borough of Hammersmith and Fulham

Council Tax band: H

Tenure: Leasehold with approximately 990 years remaining

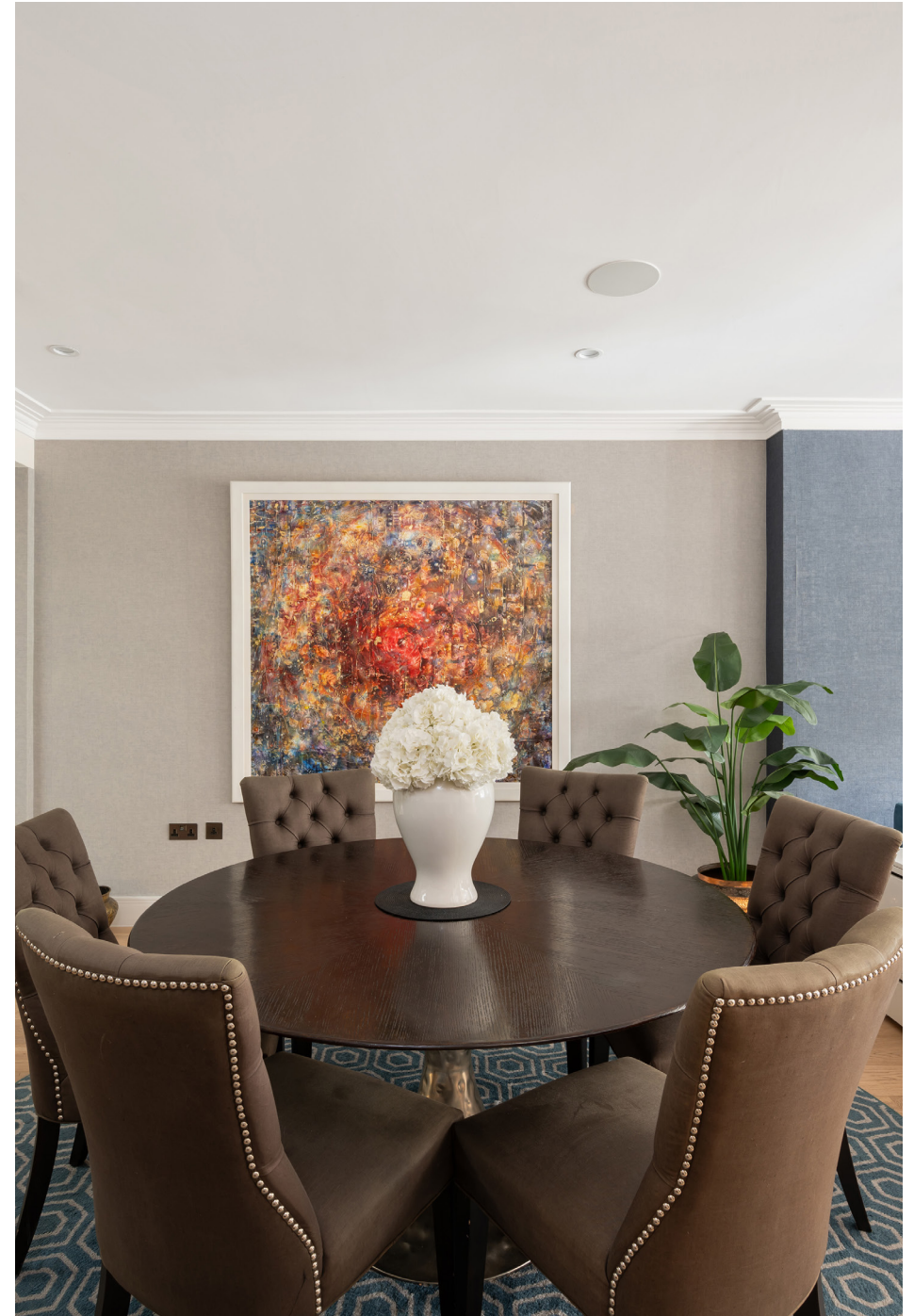
Service charge: £ 4,900, reviewed every year, next review due 2026

Guide Price: £2,300,000



## ARCHITECTURAL CHARM

This extremely well-presented home comprises double four spacious bedrooms and offers an expansive open-plan kitchen and living space designed for modern family life and entertaining. In addition, there is a large separate living room with direct access to the generous rear terrace, providing seamless indoor-outdoor living.











## MODERN LUXURY

The first floor features large full-height bi-fold doors leading onto a private terrace and courtyard garden, enhancing the connection with the outdoors. Further benefits include two private roof terraces—one of which boasts stunning views of the London skyline—an award-winning fully integrated kitchen from Metris, and convenient off-street parking via a state-of-the-art car lift with underground parking and direct access into the house.







# TIMELESS ELEGANCE

Each townhouse has been beautifully crafted and impeccably designed to embody the timeless elegance of traditional London townhouses while incorporating bespoke, high-specification features to meet the demands of contemporary lifestyles. Luxuriously designed bathrooms, Rako lighting controls throughout the property, and a multi-room Sonos 'in-ceiling' speaker system elevate the interiors with sophistication and smart technology. Additionally, integrated air filtration in every room and air conditioning in the master suite ensure a comfortable and healthy living environment. Every detail reflects a commitment to quality, elevating the living experience to a higher standard of comfort and convenience.













## Merchant Terrace, W6



Approximate Gross Internal Area = 237.1 sq m / 2552 sq ft

This plan is for layout guidance only. Not drawn to scale unless stated. Windows and door openings are approximate. Whilst every care is taken in the preparation of this plan, please check all dimensions, shapes and compass bearings before making any decisions reliant upon them. (ID767266)

We would be delighted  
to tell you more.

Adam Andersson Broholm  
+44 20 3927 6314  
adam.andersson@knightfrank.com

Knight Frank Chiswick  
64 Turnham Green Terrace  
W4 1QN

[knightfrank.co.uk](https://knightfrank.co.uk)

Your partners in property

1. Particulars: These particulars are not an offer or contract, nor part of one. You should not rely on statements given by Knight Frank in the particulars, by word of mouth or in writing ("information") as being factually accurate about the property, its condition or its value. Neither Knight Frank nor any joint agent has any authority to make any representations about the property, and accordingly any information given is entirely without responsibility on the part of Knight Frank. 2. Material Information: Please note that the material information is provided to Knight Frank by third parties and is provided here as a guide only. While Knight Frank has taken steps to verify this information, we advise you to confirm the details of any such material information prior to any offer being submitted. If we are informed of changes to this information by the seller or another third party, we will use reasonable endeavours to update this as soon as practical. 3. Photos, Videos etc: The photographs, property videos and virtual viewings etc. show only certain parts of the property as they appeared at the time they were taken. Areas, measurements and distances given are approximate only. 4. Regulations etc: Any reference to alterations to, or use of, any part of the property does not mean that any necessary planning, building regulations or other consent has been obtained. A buyer must find out by inspection or in other ways that these matters have been properly dealt with and that all information is correct. 5. Fixtures and fittings: A list of the fitted carpets, curtains, light fittings and other items fixed to the property which are included in the sale (or may be available by separate negotiation) will be provided by the Seller's Solicitors. 6. VAT: The VAT position relating to the property may change without notice. 7. To find out how we process Personal Data, please refer to our Group Privacy Statement and other notices at <https://www.knightfrank.com/legals/privacy-statement>.

Particulars dated June 2025. Photographs and videos dated June 2025. All information is correct at the time of going to print. Knight Frank is the trading name of Knight Frank LLP. Knight Frank LLP is a limited liability partnership registered in England and Wales with registered number OC305934. Our registered office is at 55 Baker Street, London W1U 8AN. We use the term 'partner' to refer to a member of Knight Frank LLP, or an employee or consultant. A list of members names of Knight Frank LLP may be inspected at our registered office. If you do not want us to contact you further about our services then please contact us by either calling 020 3544 0692, email to [marketing.help@knightfrank.com](mailto:marketing.help@knightfrank.com) or post to our UK Residential Marketing Manager at our registered office (above) providing your name and address.