

Shirley Road, Chiswick W4

---





# Shirley Road, Chiswick W4

Nestled in one of London's most desirable neighbourhoods, this stunning flat offers the perfect blend of period charm and contemporary lifestyle. This generous dual-aspect flat extends over 900 square feet, beautifully designed to maximise space and natural light. Step outside to your private garden, an exclusive oasis perfect for al fresco dining, gardening, or simply basking in the evening sun. It's the ideal spot for unwinding in the fresh air or hosting intimate gatherings. As you step inside, you are greeted by impressive high ceilings that accentuate the period features and create an airy atmosphere.

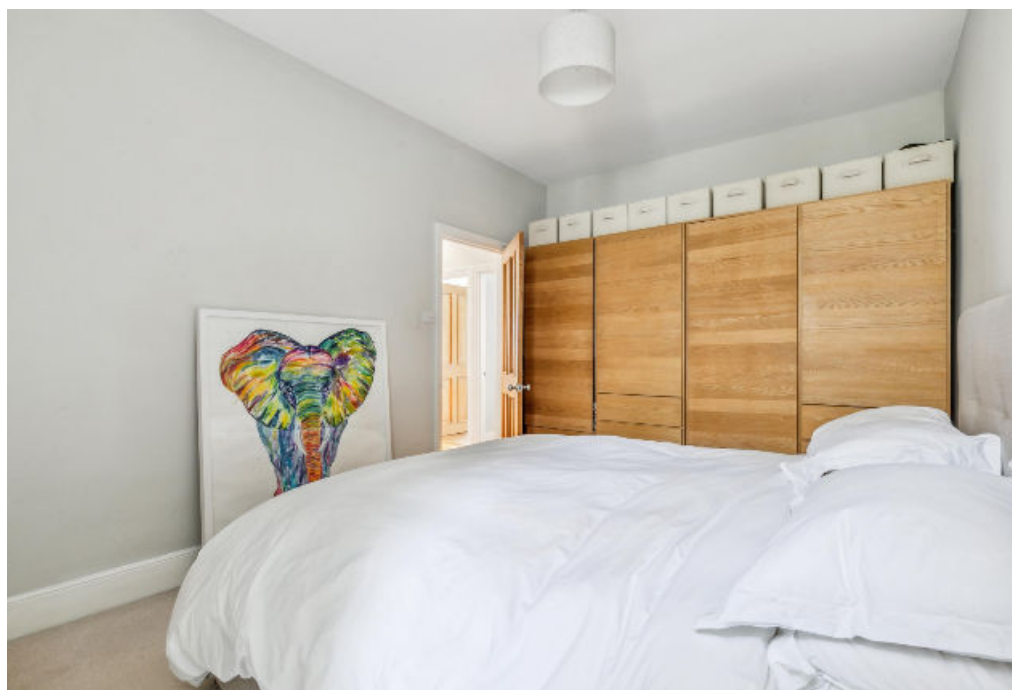


**Offers in excess of:** £865,000

**Tenure:** Freehold

**Local authority:** London Borough of Ealing

**Council tax band:** E







The flat boasts two generously sized double bedrooms, each designed to provide a tranquil retreat at the end of a busy day. With ample room for furniture and personal touches, these bedrooms are your private sanctuaries. Step outside to your own private garden, an exclusive oasis perfect for alfresco dining, gardening, or simply basking in the sun. It's the ideal spot for unwinding in the fresh air or hosting intimate gatherings.

Shirley Road is a pretty tree lined road connecting Brookfield Road to Southfield Road. Turnham Green underground station is close by as are the bustling array of shops, bars and restaurants on Chiswick High Road.







## Shirley Road, W4

Total Sqft (Including Store) : 91.7 Sq. metres  
987 Sq. feet  
Store Area : 4.05 Sq. metres  
43 Sq. feet



Key :  
CH = Ceiling Height



GROUND FLOOR

This plan is for guidance only and must not be relied upon as a statement of fact. Attention is drawn to the important notice on the last page of the text of the Particulars.

Knight Frank

Chiswick

64 Turnham Green Terrace

W4 1QN

[knightfrank.co.uk](https://www.knightfrank.co.uk)

I would be delighted to tell you more

Lewin Craig-Corbett

020 3927 6315

[lewin.craig-corbett@knightfrank.com](mailto:lewin.craig-corbett@knightfrank.com)



Fixtures and fittings: A list of the fitted carpets, curtains, light fittings and other items fixed to the property which are included in the sale (or may be available by separate negotiation) will be provided by the Seller's Solicitors.

Important Notice: 1. Particulars: These particulars are not an offer or contract, nor part of one. You should not rely on statements by Knight Frank LLP in the particulars or by word of mouth or in writing ("information") as being factually accurate about the property, its condition or its value. Neither Knight Frank LLP nor any joint agent has any authority to make any representations about the property, and accordingly any information given is entirely without responsibility on the part of the agents, seller(s) or lessor(s). 2. Photos, Videos etc: The photographs, property videos and virtual viewings etc. show only certain parts of the property as they appeared at the time they were taken. Areas, measurements and distances given are approximate only. 3. Regulations etc: Any reference to alterations to, or use of, any part of the property does not mean that any necessary planning, building regulations or other consent has been obtained. A buyer or lessee must find out by inspection or in other ways that these matters have been properly dealt with and that all information is correct. 4. VAT: The VAT position relating to the property may change without notice. 5. To find out how we process Personal Data, please refer to our Group Privacy Statement and other notices at <https://www.knightfrank.com/legals/privacy-statement>. Particulars dated October 2024. Photographs and videos dated October 2024.

Knight Frank is the trading name of Knight Frank LLP. Knight Frank LLP is a limited liability partnership registered in England and Wales with registered number OC305934. Our registered office is at 55 Baker Street, London W1U 8AN where you may look at a list of members' names. If we use the term 'partner' when referring to one of our representatives, that person will either be a member, employee, worker or consultant of Knight Frank LLP and not a partner in a partnership. If you do not want us to contact you further about our services then please contact us by either calling 020 3544 0692, email to [marketing.help@knightfrank.com](mailto:marketing.help@knightfrank.com) or post to our UK Residential Marketing Manager at our registered office (above) providing your name and address.