

Palladian Gardens, Chiswick W4



Palladian Gardens, Chiswick W4

A contemporary, two bedroom apartment is set on the first floor with a private balcony and direct views over the landscaped communal gardens. This apartment is set in the brand new Chiswick Gate development by Berkeley Homes. The Chiswick Gate apartments have been finished to the highest specification and offer a modern twist on warehouse-inspired architecture. The accommodation comprises; entrance hall, spacious reception room with private balcony offering direct views over the landscaped communal gardens, contemporary designer fitted kitchen with integrated appliances, principal bedroom with en suite shower, second double bedroom, main bathroom and separate utility cupboard with washer/dryer.



Guide price: £975,000

Tenure: Leasehold: approximately 992 years remaining

Service charge: £7,000 per annum, reviewed every year, next review due 2025

Ground rent: £650 per annum, reviewed every year, next review due 2025

Local authority: London Borough of Hounslow

Council tax band: F







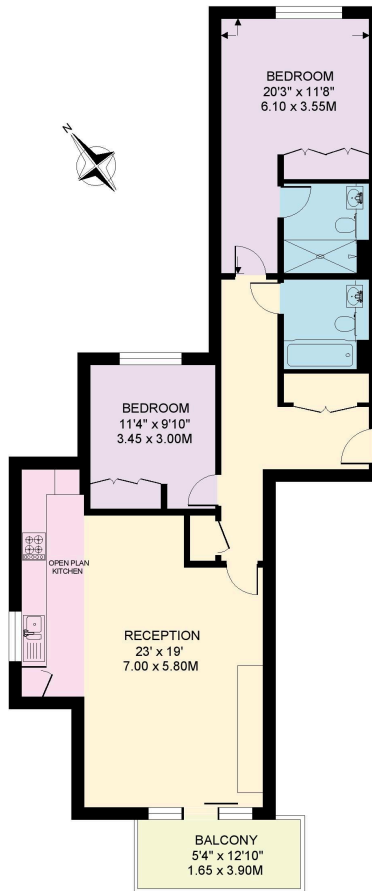
The apartment benefits from engineered timber floorings in the main living areas, Villeroy & Boch Sanitary ware, on site Gym, Concierge and allocated underground carparking space included. Chiswick Gate is located within close proximity of all the local bars, cafes, restaurants and shops on Chiswick High Road and Turnham Green Terrace and within moments of Chiswick House and Gardens. Local Transport links include Turnham Green which is within close proximity (District and Piccadilly Lines) and the A4 offering easy access in and out of London.





RENAISSANCE SQUARE
CHISWICK W4

APPROXIMATE INTERNAL FLOOR AREA
960 SQ.FT / 89.2 SQ.M.



FIRST FLOOR

This plan is for guidance only and must not be relied upon as a statement of fact. Attention is drawn to the important notice on the last page of the text of the Particulars.

Knight Frank

Chiswick

64 Turnham Green Terrace

W4 1QN

[knightfrank.co.uk](https://www.knightfrank.co.uk)

I would be delighted to tell you more

Lewin Craig-Corbett

020 3927 6315

lewin.craig-corbett@knightfrank.com



Fixtures and fittings: A list of the fitted carpets, curtains, light fittings and other items fixed to the property which are included in the sale (or may be available by separate negotiation) will be provided by the Seller's Solicitors.

Important Notice: 1. Particulars: These particulars are not an offer or contract, nor part of one. You should not rely on statements by Knight Frank LLP in the particulars or by word of mouth or in writing ("information") as being factually accurate about the property, its condition or its value. Neither Knight Frank LLP nor any joint agent has any authority to make any representations about the property, and accordingly any information given is entirely without responsibility on the part of the agents, seller(s) or lessor(s). 2. Photos, Videos etc: The photographs, property videos and virtual viewings etc. show only certain parts of the property as they appeared at the time they were taken. Areas, measurements and distances given are approximate only. 3. Regulations etc: Any reference to alterations to, or use of, any part of the property does not mean that any necessary planning, building regulations or other consent has been obtained. A buyer or lessee must find out by inspection or in other ways that these matters have been properly dealt with and that all information is correct. 4. VAT: The VAT position relating to the property may change without notice. 5. To find out how we process Personal Data, please refer to our Group Privacy Statement and other notices at <https://www.knightfrank.com/legals/privacy-statement>.

Particulars dated September 2024. Photographs and videos dated September 2024.

Knight Frank is the trading name of Knight Frank LLP. Knight Frank LLP is a limited liability partnership registered in England and Wales with registered number OC305934. Our registered office is at 55 Baker Street, London W1U 8AN where you may look at a list of members' names. If we use the term 'partner' when referring to one of our representatives, that person will either be a member, employee, worker or consultant of Knight Frank LLP and not a partner in a partnership. If you do not want us to contact you further about our services then please contact us by either calling 020 3544 0692, email to marketing.help@knightfrank.com or post to our UK Residential Marketing Manager at our registered office (above) providing your name and address.