



Stamford Brook Avenue, London W6



Lateral double fronted six bedroom, three bathroom detached house with off-street parking and garage.

Nestled in the heart of West London, Stamford Brook presents a vibrant community surrounded by the tranquil allure of Ravenscourt Park. This picturesque oasis boasts verdant greenery, a serene lake, and various recreational amenities, offering a perfect escape from the hustle and bustle of city life.



Guide price: £3,250,000

Tenure: Available freehold

Local authority: London Borough of Hounslow

Council tax band: G





The ground floor features double reception rooms, perfect for both entertaining and relaxing with family. The kitchen and dining room, equipped with a large kitchen island, provide an ideal space for casual meals and culinary creativity. Adjacent to the kitchen, a separate utility room adds convenience, while a study offers a quiet workspace. Large sliding doors in the reception & kitchen area open to a very private and secluded garden, creating a seamless indoor-outdoor living experience. The entire ground floor benefits from underfloor heating, ensuring year-round comfort.

Ascending to the first floor, you will find four well-appointed bedrooms, three of which are spacious doubles. The master bedroom features an en-suite bathroom, offering a private sanctuary, while a stylish family bathroom serves the remaining three bedrooms. The second floor continues to impress with two additional generously sized bedrooms, one of which includes an en-suite bathroom, providing a private retreat for guests or family members.

This home combines luxury, comfort, and practicality, making it an ideal choice for modern living. Its spacious layout, modern amenities, and elegant design make it perfect for families or anyone seeking a stylish and comfortable residence. The unique blend of traditional charm and contemporary features ensures this property stands out as a prime residential offering, designed to meet all your needs and exceed your expectations.



Chiswick High Road is within short distance, renowned for its diverse array of boutique shops, cozy cafes, and enticing eateries. Residents are spoiled for choice with an abundance of dining, shopping, and entertainment opportunities within easy reach. A short distance away you also have the River Thames with a scenic riverside path to Hammersmith Bridge.



Location

Stamford Brook Underground station (District line) is conveniently located approximately 0.1 miles away, facilitating enviable commuting to locations like Heathrow, Piccadilly Circus and City. Nearby schools include leading secondary schools Latymer, St Pauls Boys, St Pauls Girls and Godolphin & Latymer.





**Approximate Gross Internal Area
(Including Eaves Storage, Store & Garage)**

297.56 sq m / 3203 sq ft

Approximate Eaves Storage Area

28.33 sq m / 305 sq ft

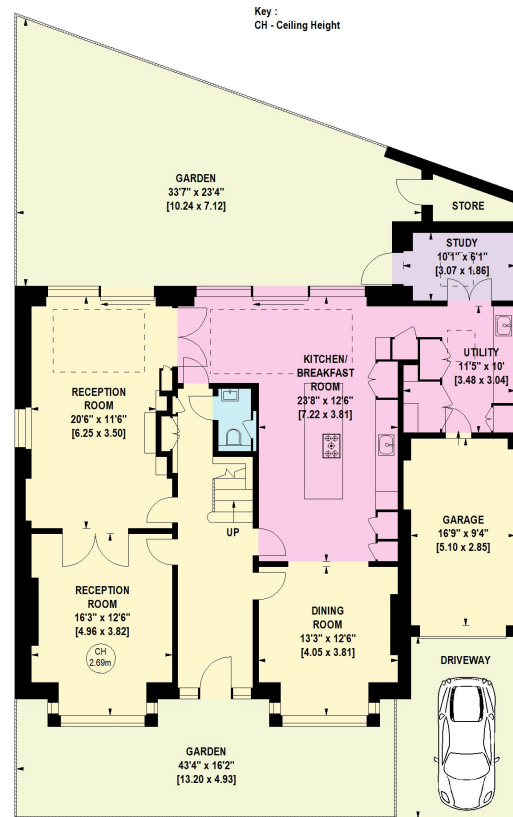
Approximate Store Area

2.04 sq m / 22 sq ft

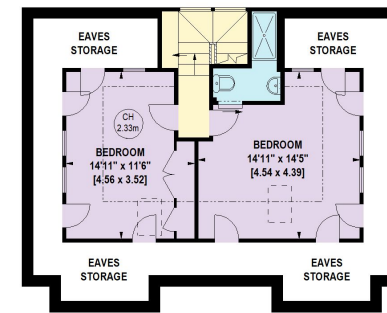
Approximate Garage Area

14.77 sq m / 159 sq ft

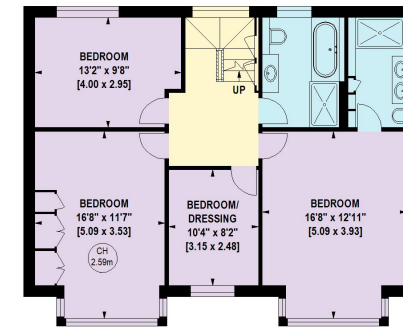
This plan is for guidance only and must not be relied upon as a statement of fact. Attention is drawn to the important notice on the last page of the text of the Particulars.



GROUND FLOOR



SECOND FLOOR



FIRST FLOOR

Knight Frank

Chiswick

64 Turnham Green Terrace

W4 1QN

[knightfrank.co.uk](https://www.knightfrank.co.uk)

I would be delighted to tell you more.

Adam Andersson Broholm

+44 20 3927 6315

adam.andersson@knightfrank.com



Fixtures and fittings: A list of the fitted carpets, curtains, light fittings and other items fixed to the property which are included in the sale (or may be available by separate negotiation) will be provided by the Seller's Solicitors.

Important Notice: 1. Particulars: These particulars are not an offer or contract, nor part of one. You should not rely on statements by Knight Frank LLP in the particulars or by word of mouth or in writing ("information") as being factually accurate about the property, its condition or its value. Neither Knight Frank LLP nor any joint agent has any authority to make any representations about the property, and accordingly any information given is entirely without responsibility on the part of the agents, seller(s) or lessor(s). 2. Photos, Videos etc: The photographs, property videos and virtual viewings etc. show only certain parts of the property as they appeared at the time they were taken. Areas, measurements and distances given are approximate only. 3. Regulations etc: Any reference to alterations to, or use of, any part of the property does not mean that any necessary planning, building regulations or other consent has been obtained. A buyer or lessee must find out by inspection or in other ways that these matters have been properly dealt with and that all information is correct. 4. VAT: The VAT position relating to the property may change without notice. 5. To find out how we process Personal Data, please refer to our Group Privacy Statement and other notices at <https://www.knightfrank.com/legals/privacy-statement>.

Particulars dated June 2024. Photographs and videos dated June 2024.

All information is correct at the time of going to print. Knight Frank is the trading name of Knight Frank LLP. Knight Frank LLP is a limited liability partnership registered in England and Wales with registered number OC305934. Our registered office is at 55 Baker Street, London W1U 8AN. We use the term 'partner' to refer to a member of Knight Frank LLP, or an employee or consultant. A list of members names of Knight Frank LLP may be inspected at our registered office. If you do not want us to contact you further about our services then please contact us by either calling 020 3544 0692, email to marketing.help@knightfrank.com or post to our UK Residential Marketing Manager at our registered office (above) providing your name and address.