



Eastbourne Road, London, W4



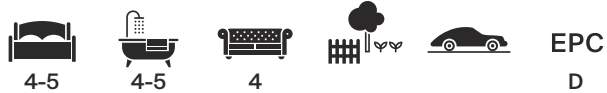


Eastbourne Road, London W4

This exquisite five bedroom detached house offers unparalleled comfort and style, with four bathrooms and gated parking for your convenience and security.

Eastbourne Road is situated within a conservation area, located moments away from Chiswick High Road, ideal for the many boutiques, bars and restaurants. The open spaces of Chiswick House are also within easy walking distance.

Chiswick Mainline station (Southwest Trains to Waterloo) is 0.5 miles away by foot and Chiswick Park (District Line) is 0.7 miles away by foot. Motorist will benefit from easy access to the A40 and M4.



Guide price: £3,850,000

Tenure: Freehold

Local authority: London Borough of Hounslow

Council tax band: H







Eastbourne Road, London W4

As you step inside, you're greeted by a grand entrance hall, setting the tone for the elegance that awaits. The ground floor offers a spacious kitchen with a good size island, while the living room, office, dining room and sitting room provide ample space for relaxation and productivity.

Outside, a really good size garden sets the stage for memorable gatherings and outdoor entertainment, making it an ideal haven for hosting family and friends. Nestled in the back of the garden is an annexe, providing additional space for guests or would perfect as a gym, office or additional living space.







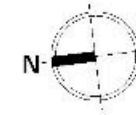
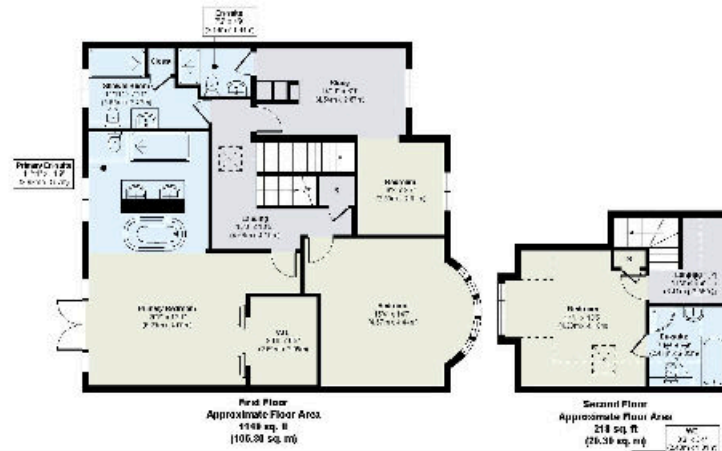
Eastbourne Road, London, W4

The first floor hosts three good size bedrooms, including a bedroom with study and en suite shower room. The principal suite has a walk-in wardrobe and en suite bathroom, ensuring privacy and indulgence. Completing this floor is a family bathroom.

Ascend to the second floor to discover a bright bedroom with en suite bathroom, offering serene views and tranquillity.







Eastbourne Road, W4

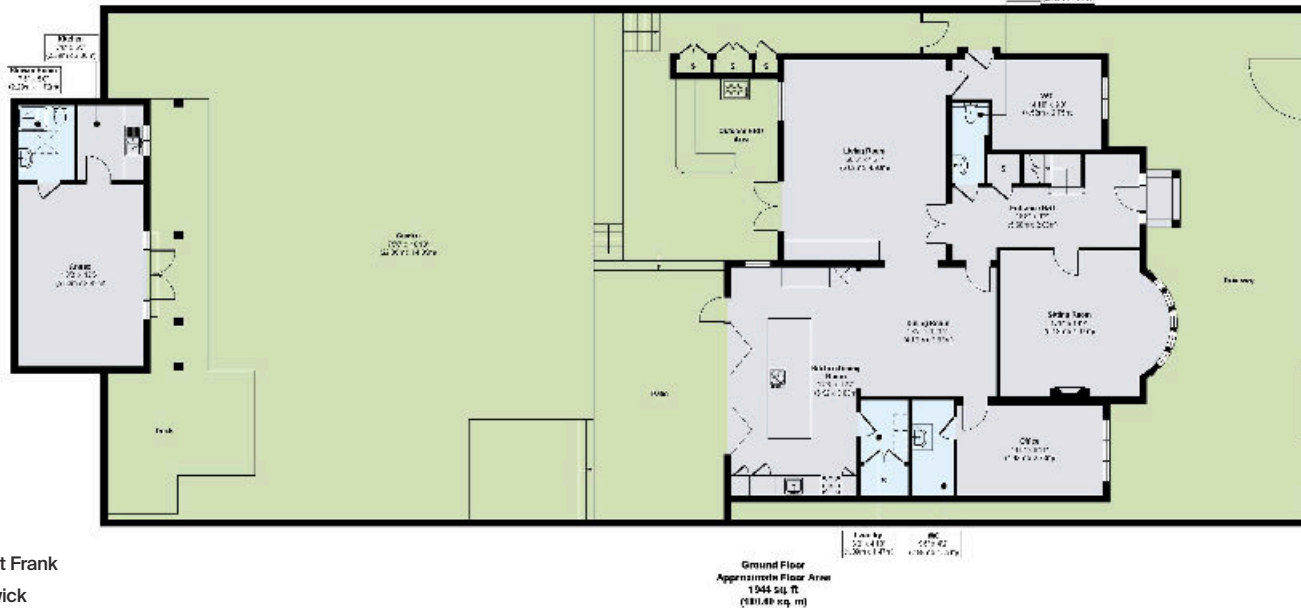
Approximate Gross Internal Floor Area
307.7 sq m / 3312 sq ft

Total including storage & reduced headroom
318.5 sq m / 3428 sq ft

This plan is for guidance only and must not be relied upon as a statement of fact. Attention is drawn to the important notice on the last page of the text of the Particulars.

Material Information

Please note, we have not yet received confirmation from the client regarding certain information for this property. You should ensure you make your own enquiries regarding material information about this property.



Knight Frank

Chiswick

64 Turnham Green Terrace

W4 1QN

[knightfrank.co.uk](https://www.knightfrank.co.uk)

We would be delighted to tell you more

Adam Andersson Broholm

+44 20 3927 6315

adam.andersson@knightfrank.com

Lewin Craig-Corbett

020 3927 6315

lewin.craig-corbett@knightfrank.com

Fixtures and fittings: A list of the fitted carpets, curtains, light fittings and other items fixed to the property which are included in the sale (or may be available by separate negotiation) will be provided by the Seller's Solicitors.

Important Notice: 1. Particulars: These particulars are not an offer or contract, nor part of one. You should not rely on statements by Knight Frank LLP in the particulars or by word of mouth or in writing ("information") as being factually accurate about the property, its condition or its value. Neither Knight Frank LLP nor any joint agent has any authority to make any representations about the property, and accordingly any information given is entirely without responsibility on the part of the agents, seller(s) or lessor(s). 2. Photos, Videos etc: The photographs, property videos and virtual viewings etc. show only certain parts of the property as they appeared at the time they were taken. Areas, measurements and distances given are approximate only. 3. Regulations etc: Any reference to alterations to, or use of, any part of the property does not mean that any necessary planning, building regulations or other consent has been obtained. A buyer or lessee must find out by inspection or in other ways that these matters have been properly dealt with and that all information is correct. 4. VAT: The VAT position relating to the property may change without notice. 5. To find out how we process Personal Data, please refer to our Group Privacy Statement and other notices at <https://www.knightfrank.com/legals/privacy-statement>. Particulars dated February 2024. Photographs and videos dated February 2024.

All information is correct at the time of going to print. Knight Frank is the trading name of Knight Frank LLP. Knight Frank LLP is a limited liability partnership registered in England and Wales with registered number OC305934. Our registered office is at 55 Baker Street, London W1U 8AN. We use the term 'partner' to refer to a member of Knight Frank LLP, or an employee or consultant. A list of members names of Knight Frank LLP may be inspected at our registered office. If you do not want us to contact you further about our services then please contact us by either calling 020 3544 0692, email to marketing.help@knightfrank.com or post to our UK Residential Marketing Manager at our registered office (above) providing your name and address.

