



Doulton House, Chelsea Creek
Fulham SW6

GARTON JONES.COM

Doulton House, Chelsea Creek Fulham, SW6

GARTON JONES.COM

13 Park Street
Chelsea Creek
London
SW6 2FS

Lettings:
+44 (0) 20 7824 7090
paul@gartonjones.com
www.gartonjones.com

£1,300 Per Week

Furnished Three-Bedroom Apartment — Chelsea Creek, Fulham

An outstanding three-bedroom, three-bathroom apartment situated within the highly desirable Chelsea Creek dockside development. Spanning approximately 1,356 sq ft (126 sq m), this contemporary interior-designed home is furnished to a high specification throughout.

The property features a spacious open-plan reception with a fully fitted kitchen and integrated appliances, opening onto a balcony. The master bedroom offers excellent built-in storage and a luxury ensuite, while two further double bedrooms are served by two additional guest bathrooms.

Residents benefit from a 24-hour concierge, gym and spa facilities, and communal landscaped gardens. Chelsea Creek is conveniently located near the King's Road and just moments from Imperial Wharf Overground Station, providing quick access to West Brompton (District Line) and Clapham Junction.

A rare opportunity to rent a spacious, modern riverside apartment in one of West London's most sought-after developments.

**** Please note the furniture may differ or not be included to that shown in current photos****

12-month minimum term - 6-week deposit required

Council Tax — London Borough of Hammersmith & Fulham Council (band G)

EPC C(75)

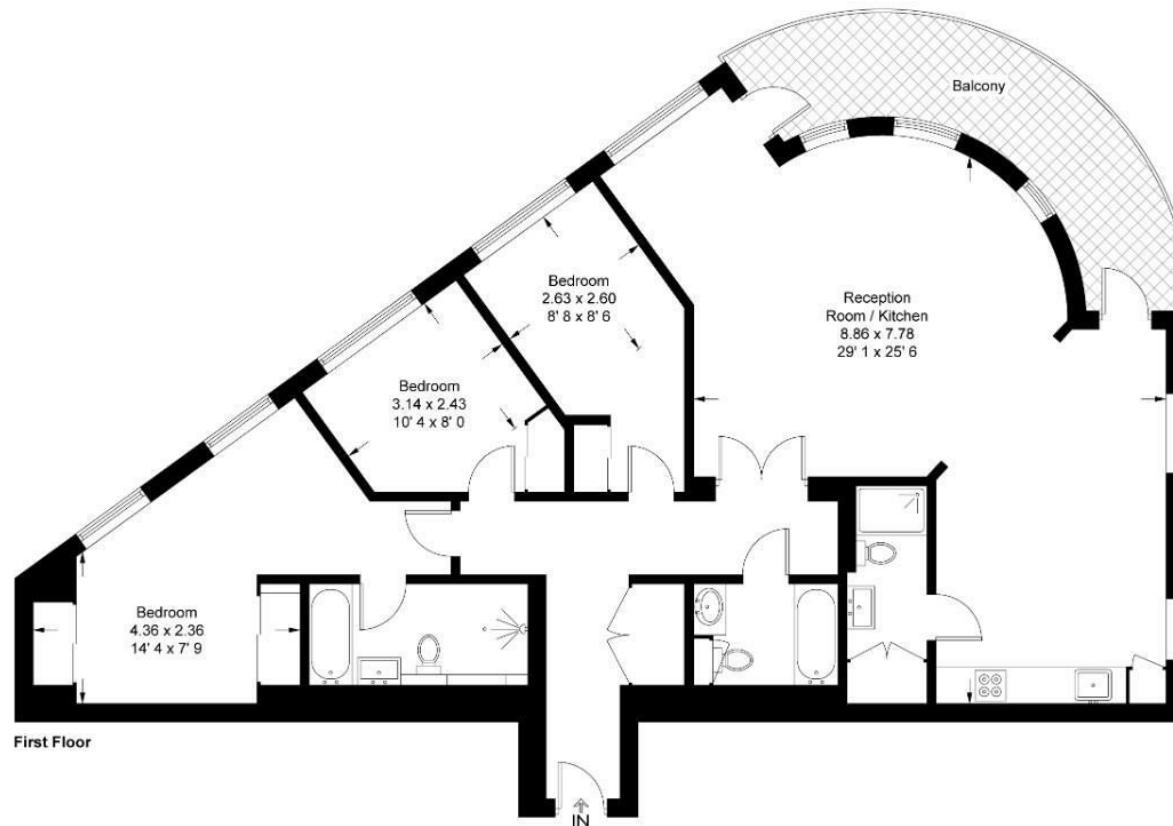
- Three Bedrooms
- Three Bathrooms
- 1382 Sqft (129 Sqm)
- Desirable Dockside Development
- Residents' Gym & Spa
- Balcony
- 24 Hour Concierge
- Fully Furnished
- Mainline Access Via Imperial Wharf
- EPC C (75)



Doulton House

Approximate Gross Internal Area = 1356 sq ft / 126 sq m

GARTON JONES
LONDON



This plan is not to scale and must be used as layout guidance only. All measurements and areas are approximate and should not be relied upon to provide accurate information. This plan must not be relied upon when making property valuations, design considerations or any other such relevant decisions. We accept no responsibility or liability (whether in contract, tort or otherwise) in relation to any loss whatsoever arising from or in connection with any use of this plan or the adequacy, accuracy or completeness of it or any information within it.



