



Kings Tower, Chelsea Creek
Fulham SW6

GARTON JONES.COM



Kings Tower, Chelsea Creek Fulham, SW6

GARTON JONES.COM

13 Park Street
Chelsea Creek
London
SW6 2FS

Sales +44 (0) 20 7824 7090
paul@gartonjones.com
www.gartonjones.com

£1,500,000 Leasehold

Modern Two-Bedroom Apartment with Balcony | Kings Tower

Located on the 12th floor of the landmark Kings Tower, this stylish two-bedroom apartment offers 923 sq ft (85.8 sq m) of well-designed living space within one of West London's premier riverside developments.

The property features a bright open-plan living and kitchen area with access to a private balcony, two spacious double bedrooms with built-in wardrobes, and a luxury ensuite to the principal bedroom, alongside a contemporary family bathroom. Ample hallway storage and high-quality finishes are present throughout.

Residents benefit from exclusive Halcyon Club amenities, including a 31st-floor sky lounge and panoramic terrace, two private cinemas, business lounge and meeting rooms, a 24-hour concierge, and a comprehensive spa and wellness centre with swimming pool, gym, sauna, and steam room.

Ideally located, the apartment is moments from Imperial Wharf Overground, approximately 0.5 miles from Fulham Broadway Underground, and within easy reach of King's Road, Chelsea Harbour, and the Thames Path.

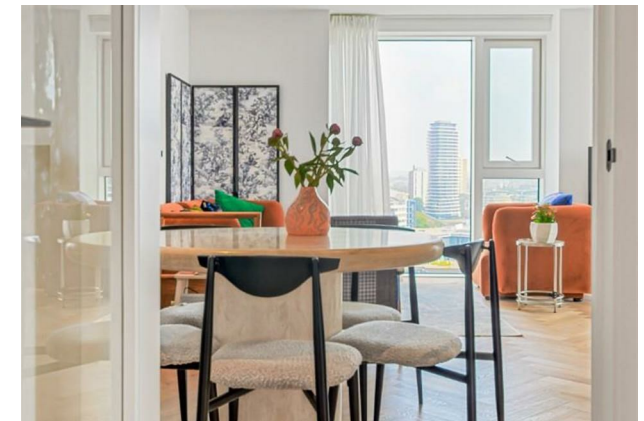
An excellent opportunity to acquire a luxury apartment in a highly sought-after riverside location.

Lease — 999 from 2010
Ground Rent - £TBC
Service Charge - £7,261.06 Per Annum

6 Weeks Security Deposit
12 Month Tenancy
Council Tax — London Borough of Hammersmith & Fulham — Band G

EPC B(83)

- 12th Floor With Fantastic Views
- High Popular Kings Tower
- Two Bedroom Apartment
- Ensuite To Master Bedroom
- 923sqft (85.8sqm)
- Balcony
- Residents Sky Roof Terrace & Lounge At The Halcyon Club, Residents Cinema & Business Lounge
- Fitness Centre, Indoor Pool, Sauna & Steam Room, Gymnasium
- Close To Imperial Wharf
- EPC B(83)

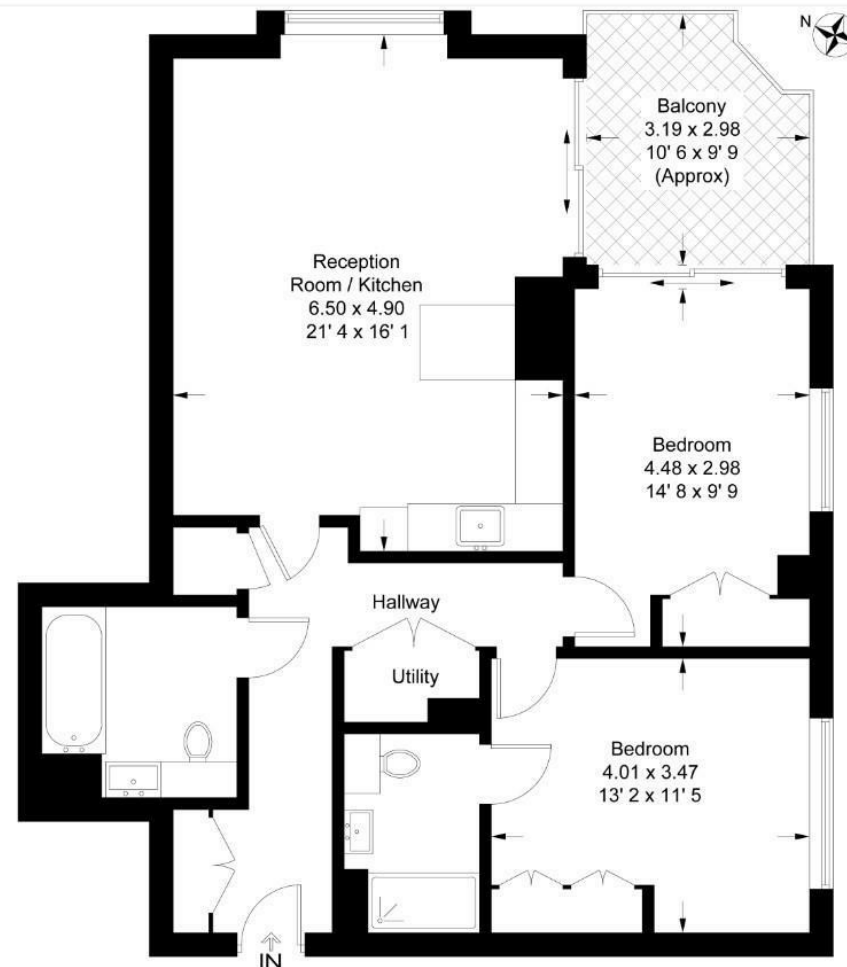


EPC certificate available on request.

Kings Tower

Approximate Gross Internal Area = 923 sq ft / 85.8 sq m
Balcony = 95 sq ft / 8.8 sq m

GARTON JONES
LONDON



Twelfth Floor

This plan is not to scale and must be used as layout guidance only. All measurements and areas are approximate and should not be relied upon to provide accurate information. This plan must not be relied upon when making property valuations, design considerations or any other such relevant decisions. We accept no responsibility or liability (whether in contract, tort or otherwise) in relation to any loss whatsoever arising from or in connection with any use of this plan or the adequacy, accuracy or completeness of it or any information within it.



