



Kings Tower, London
SW6

GARTONJONES.COM



Kings Tower, London , SW6

GARTON JONES.COM

11 Park Street
Chelsea Creek
London
SW6 2FS

Sales +44 (0) 20 7824 7090
paul@gartonjones.com
www.gartonjones.com

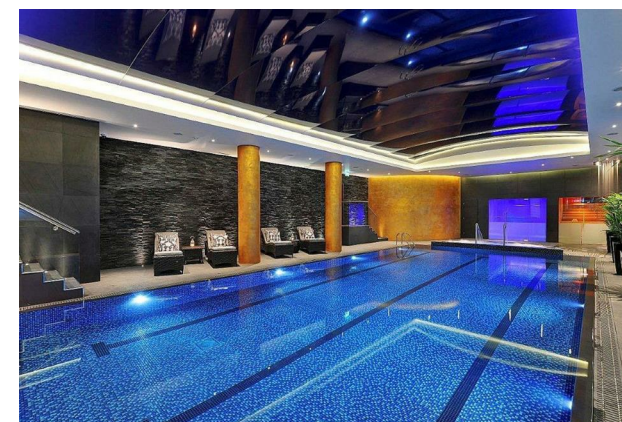
£1,338 Per Week

A Two-bedroom apartment 923sqft (85.8sqm) which is located on the 12th Floor of this highly sought after building here at Chelsea Creek which is just over 12 months old. The accommodation is offered furnished and comprises of an open plan spacious lounge / Kitchen area and access to the balcony, two bedrooms both benefitting from built in wardrobes and the master also has access to an ensuite, family bathroom, ample storage space in the entrance hall. The Kings tower has access to the Halcyon Club which will offer a 31st floor sky lounge and terrace with enviable views towards the city, two resident cinema's, business lounge & private meeting rooms, 24-hour concierge and a fitness centre offering an indoor pool, sauna & steam room as well as a gymnasium. Chelsea Creek is located near to Imperial Wharf Overground station and half a mile away you will find Fulham Broadway Underground station which offers District line services both offering excellent links around London as well as the famous Kings Road which offers a wide range of designer boutiques, top class restaurants, bars and quaint cafes.

6 Weeks Security Deposit
12 Month Tenancy
Council Tax — London Borough of Hammersmith & Fulham — Band G

EPC B(83)

- 12th Floor with Fantastic Views
- High Popular Kings Tower
- Two Bedroom Apartment
- Furnished
- Ensuite To Master Bedroom
- 923sqft (85.8sqm)
- Balcony
- Residents Sky Roof Terrace & Lounge At The Halcyon Club, Residents Cinema & Business Lounge
- Fitness Centre, Indoor Pool, Sauna & Steam room, Gymnasium
- EPC B(83)

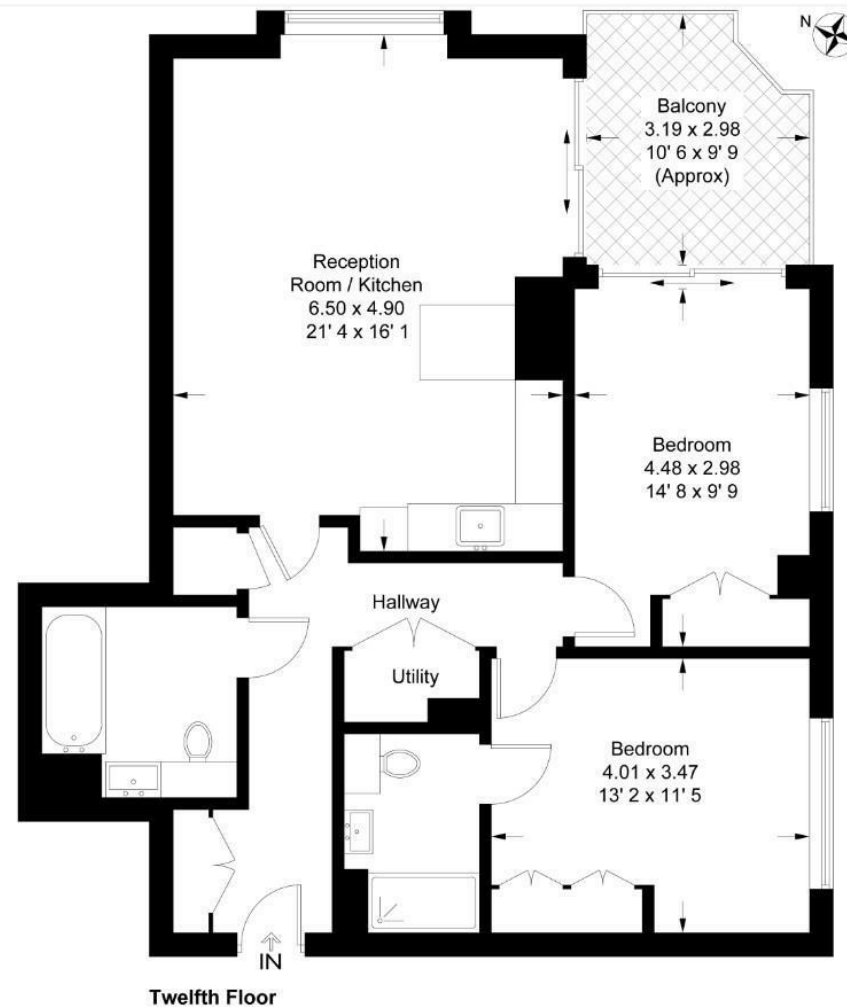


EPC certificate available on request.

Kings Tower

Approximate Gross Internal Area = 923 sq ft / 85.8 sq m
Balcony = 95 sq ft / 8.8 sq m

GARTON JONES
LONDON



This plan is not to scale and must be used as layout guidance only. All measurements and areas are approximate and should not be relied upon to provide accurate information. This plan must not be relied upon when making property valuations, design considerations or any other such relevant decisions. We accept no responsibility or liability (whether in contract, tort or otherwise) in relation to any loss whatsoever arising from or in connection with any use of this plan or the adequacy, accuracy or completeness of it or any information within it.



