



Thurstan Street, Chelsea Creek
London SW6

GARTONJONES.COM



Thurstan Street, Chelsea Creek London, SW6

GARTON JONES.COM

11 Park Street
Chelsea Creek
London
SW6 2FS

Lettings:
+44 (0) 20 7824 7090
paul@gartonjones.com
www.gartonjones.com

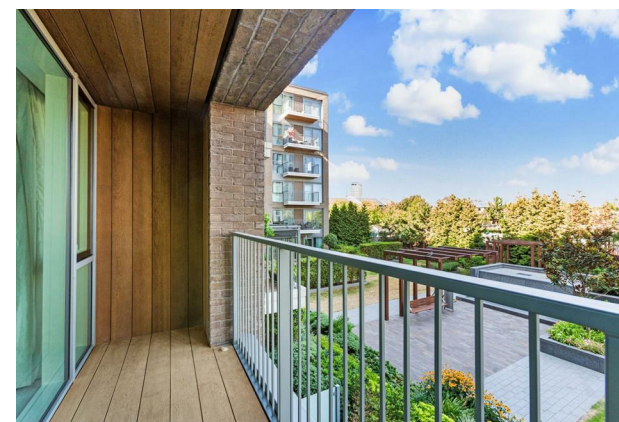
£650 Per Week

A modern one bedroom apartment situated on the first floor of this popular development measuring approx. 588sq.ft (54.6sq.m) located in heart of Chelsea Creek. This stylishly furnished apartment offers an open plan reception with an integrated kitchen and access to a balcony overlooking the communal gardens. Additionally, there is a utility cupboard housing a washer dryer, good storage throughout, wood flooring, comfort cooling and under-floor heating. The idyllic canal side development which was built by the renowned Berkeley St George offers On-site a resident's gym, swimming pool, spa and 24-hour concierge. Chelsea Creek is located nearby to Imperial Wharf Overground station and Fulham Broadway Underground station both offering excellent links around London as well as the famous Kings Road which offers a wide range of designer boutiques, top class restaurants, bars and quaint cafes.

Please note furniture may differ to that shown in the current photos.

Deposit 5 weeks — tenancy 12 months
Council Tax — Hammersmith & Fulham Band E (£1461PA)

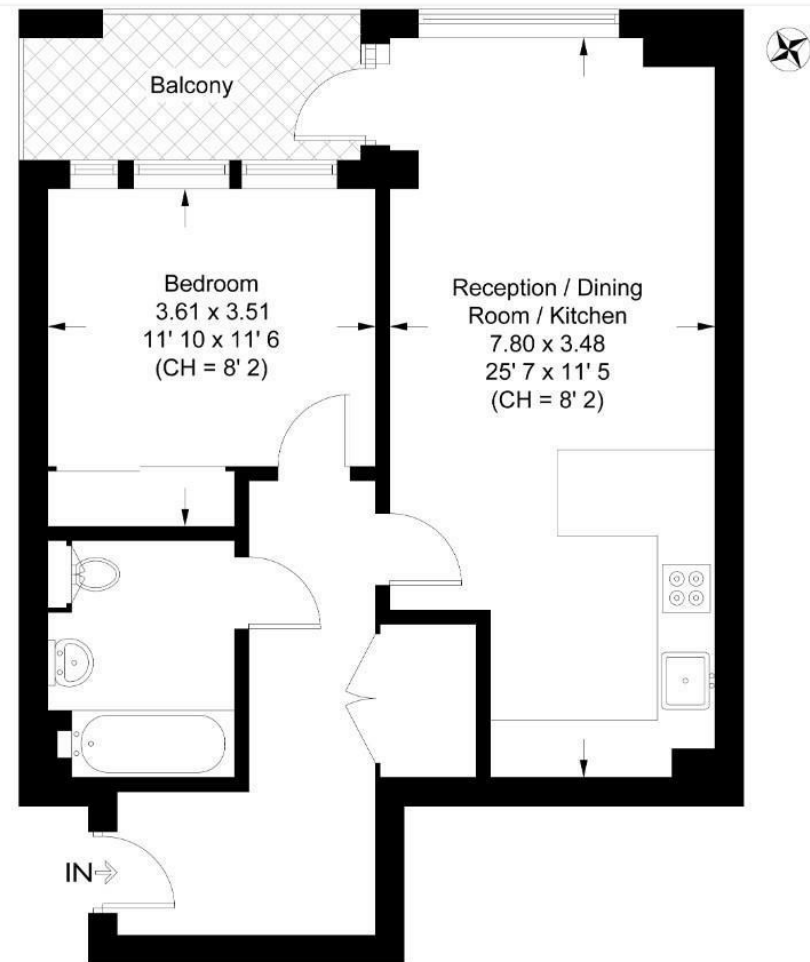
- One Bedroom Apartment
- Furnished
- 1st Floor With Lift
- Balcony
- 588sqft (54.6sq.m)
- Easy Reach Of Imperial Wharf Overground Station
- Residents Swimming Pool & Gymnasium
- 24 Hour Concierge
- Overlooking The Communal Garden
- EPC — B(82)



Lockside House

Approximate Gross Internal Area = 588 sq ft / 54.6 sq m

GARTON JONES
LONDON



First Floor

This plan is not to scale and must be used as layout guidance only. All measurements and areas are approximate and should not be relied upon to provide accurate information. This plan must not be relied upon when making property valuations, design considerations or any other such relevant decisions. We accept no responsibility or liability (whether in contract, tort or otherwise) in relation to any loss whatsoever arising from or in connection with any use of this plan or the adequacy, accuracy or completeness of it or any information within it.



